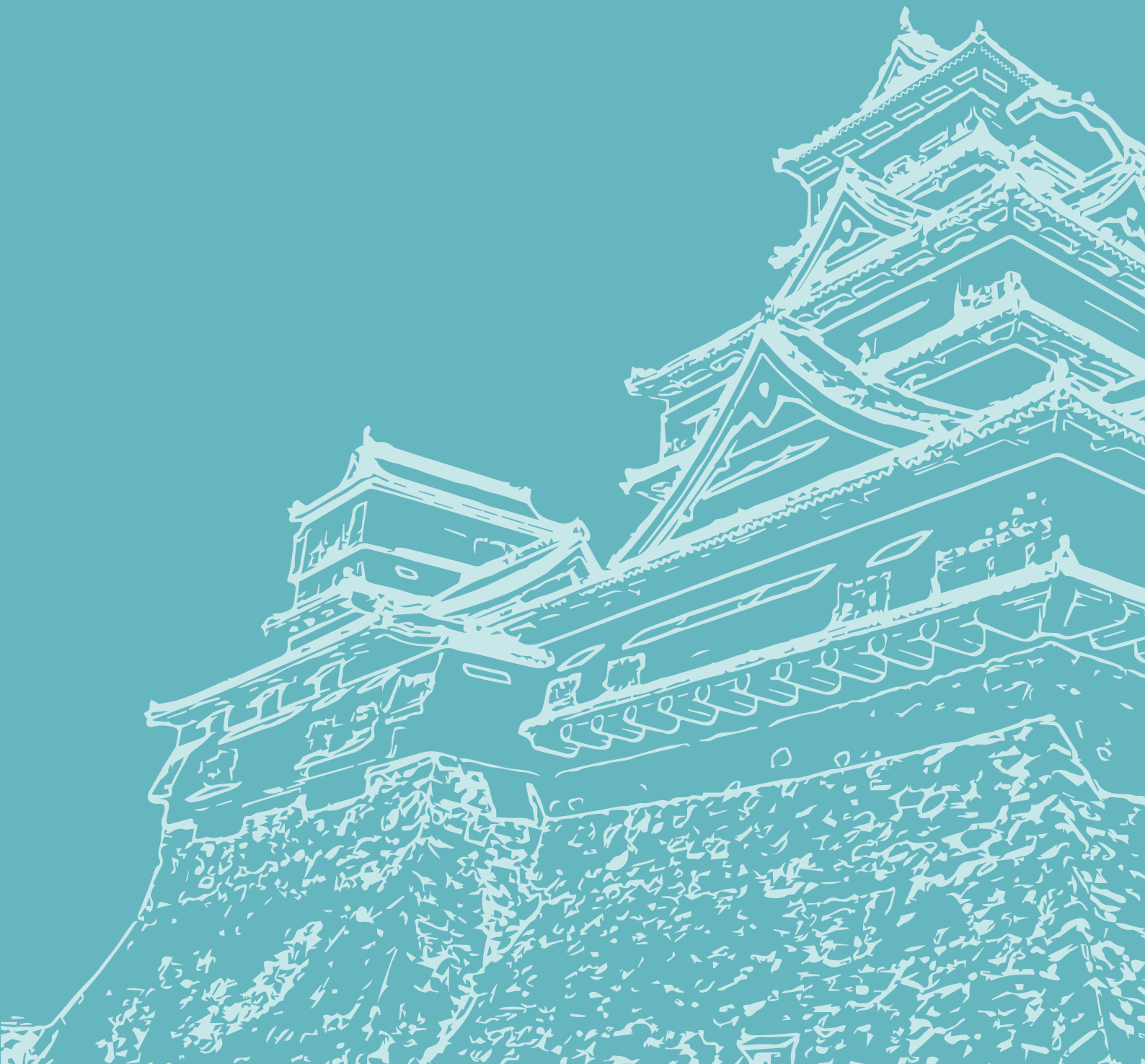


# KUMAMOTO MICE Guide



# KUMAMOTO MICE

Kumamoto is located in central Kyushu and is known for its history, culture, and natural environment. The city of Kumamoto, the region's core, has a population of approximately 740,000. It was originally developed as a castle town around Kumamoto Castle, built by the samurai Kato Kiyomasa. Today, it is an ordinance-designated city and functions as a regional hub for economy, healthcare, culture, and education. In recent years, major global semiconductor companies have established operations in the area, leading to the growth of related industries. Kumamoto is continuing to develop as an international industrial city, attracting advanced technologies and skilled professionals from around the world.

The city of Kumamoto is known as the "City of Water" due to its abundant groundwater, which supplies 100% of the city's tap water. Among large cities in Japan with a similar population, Kumamoto is the only one that relies entirely on groundwater. It is recognized as a city with a rare and valuable water system.

Kumamoto offers historical sites such as Kumamoto Castle, traditional performing arts, groundwater sourced from the Aso region, fresh local produce, and regional dishes. The city also has accommodation, convention facilities, and shopping areas located within a compact urban area. We hope you will experience these features, along with the character of the local community, by holding your convention in Kumamoto.

We look forward to your visit and to hosting your event in Kumamoto.

## CONTENTS

- 3 - 4p Travel Information
- 5 - 6p Walkable MICE
- 7 - 8p Kumamoto's SDGs Initiatives
- 9 -10p A City With Much to Offer
- 11-17p Support for Convention Organizers
- 18p Convention Venue Guide
- 19-20p Accommodation Guide
- 21-22p Map of City-Owned Facilities
- 23-28p Attractions Around Kumamoto Castle
- 29-30p Discover Kumamoto
- 31-33p A Unique Venue
- 34-36p Excursions
- 36p Technical Site Visits
- 37-38p Directory of Related Companies



# 1

## Where Convenience Meets Innovation

充実したMICEの環境!

# 2

## Enjoy a Walkable MICE City

ウォークアブルなMICEを楽しむ!

# 3

## A City Brimming With Allure

魅力あふれる都市!



### Aso Kumamoto Airport

Travel Time to Major Airports  
 空港間所要時間 (Direct Flights From Aso Kumamoto Airport)

#### Domestic Flights 国内線

- Haneda** (Tokyo) 羽田 (東京) Approx. 1 h 35 mins
- Narita** (Chiba) 成田国際 (千葉) Approx. 1 h 45 mins
- Nagoya** (Aichi) 名古屋 (愛知) Approx. 1 h 20 mins
- Chubu** (Aichi) 中部国際 (愛知) Approx. 1 h 20 mins
- Osaka** (Osaka) 大阪国際 (大阪) Approx. 1 h 05 mins
- Fujisan Shizuoka** (Shizuoka) 富士山静岡 (静岡) Approx. 1 h 25 mins
- Amakusa** (Kumamoto) 天草 (熊本) Approx. 20 mins
- Naha** (Okinawa) 那覇 (沖縄) Approx. 1 h 25 mins

#### International Flights 国際線

- Seoul-Incheon** 仁川 (インチョン) (韓国) Approx. 1 h 30 mins
- Taipei** 台湾桃園 (タイペイ) (台湾) Approx. 2 hrs 15 mins
- Kaohsiung** 高雄 (タカオ) (台湾) Approx. 2 hrs 30 mins
- Hong Kong** 香港 (ホンコン) (香港) Approx. 3 hrs

#### Via Seoul-Incheon 仁川 (インチョン) (韓国) 経由

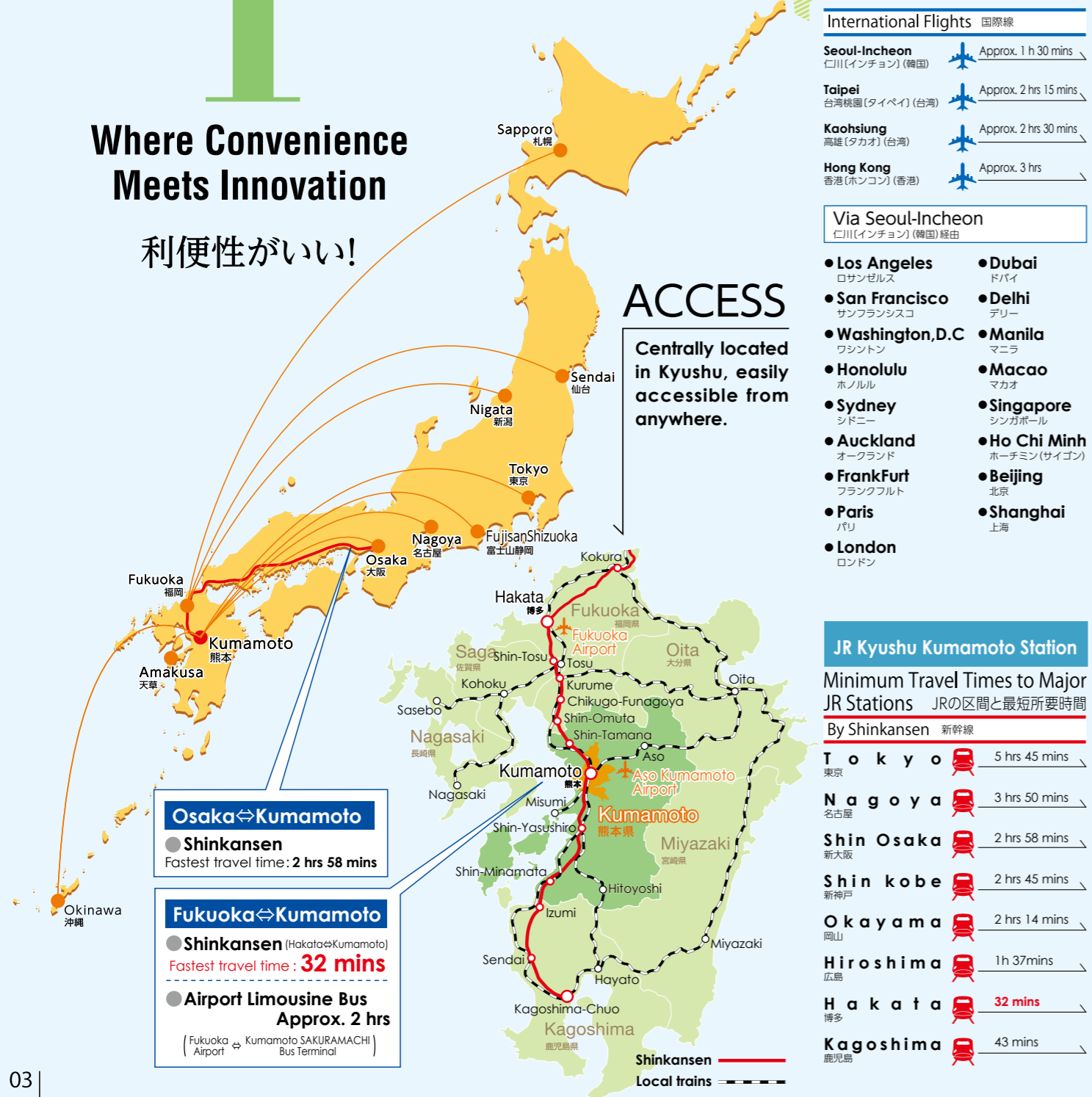
- Los Angeles ロサンゼルス
- San Francisco サンフランシスコ
- Washington, D.C. ワシントン
- Honolulu ホノルル
- Sydney シドニー
- Auckland オークランド
- Paris フランクフルト
- London ロンドン
- Dubai ドバイ
- Delhi デリー
- Manila マニラ
- Macao マカオ
- Singapore シンガポール
- Ho Chi Minh ホーチミン (サイゴン)
- Beijing 北京
- Shanghai 上海

## Where Convenience Meets Innovation

利便性が高い!

## ACCESS

Centrally located in Kyushu, easily accessible from anywhere.



**Osaka ↔ Kumamoto**  
 ● Shinkansen  
 Fastest travel time: 2 hrs 58 mins

**Fukuoka ↔ Kumamoto**  
 ● Shinkansen (Hakata ↔ Kumamoto)  
 Fastest travel time: 32 mins

● Airport Limousine Bus  
 Approx. 2 hrs  
 (Fukuoka Airport ↔ Kumamoto SAKURAMACHI Bus Terminal)

### JR Kyushu Kumamoto Station

Minimum Travel Times to Major JR Stations JRの区間と最短所要時間

#### By Shinkansen 新幹線

- Tokyo** 東京 5 hrs 45 mins
- Nagoya** 名古屋 3 hrs 50 mins
- Shin Osaka** 新大阪 2 hrs 58 mins
- Shin Kobe** 新神戸 2 hrs 45 mins
- Okayama** 岡山 2 hrs 14 mins
- Hiroshima** 広島 1h 37mins
- Hakata** 博多 32 mins
- Kagoshima** 鹿児島 43 mins

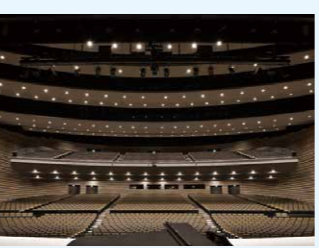
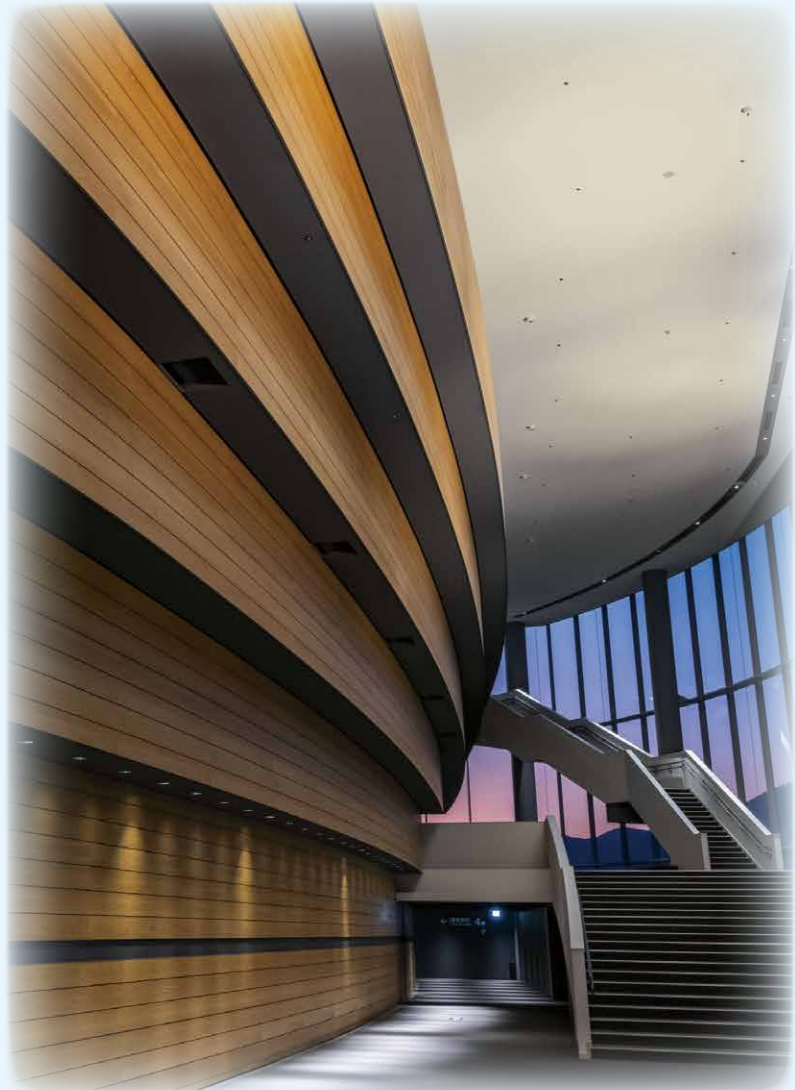
## Kumamoto-Jo Hall

Kumamoto-Jo Hall opened in December 2019.

This four-story facility features a main hall, conference rooms, a civic hall, and an exhibition space. It also includes an on-site bus terminal, hotel, shops, and parking facilities.

Centrally located in downtown Kumamoto, the venue is equipped with modern amenities and serves as a hub for both community events and large-scale conferences. It can host around 3,000 attendees on its own or up to 5,000 when used in conjunction with nearby facilities—making it ideal for academic conferences and major events.

With views of the iconic Kumamoto Castle, the hall offers both convenience and a strong sense of place.



◆ Main Hall (fourth floor)

With 2,304 fixed seats, the main hall is one of the largest venues in Kyushu. As the largest event space in central Kumamoto, it is well-suited for a wide range of events, including concerts, symposiums, and large academic conferences.



◆ Conference Rooms (third floor)

The conference floor includes 19 rooms of various sizes, with flexible layout options. The largest room offers 1,200m<sup>2</sup> of space and can be divided into up to four sections. Rooms can be combined or separated to suit different group sizes and event types.

The layout is adaptable for everything from seminars to exhibitions.



◆ Civic Hall (second floor)

This flexible event space, equipped with movable seating, is suitable for a wide range of uses. The layout can be customized to meet the needs of different events, including academic conferences, ceremonies, award presentations, and symposiums. It also features audio facilities, making it appropriate for concerts, fashion shows, and other performance-based events.



◆ Exhibition Hall (first floor)

This exhibition hall offers 1,630m<sup>2</sup> of floor space with a 6-meter-high ceiling. It supports vehicle access for trucks up to 11 tons and features reinforced flooring suitable for heavy equipment. The space is well-suited for trade shows, sporting events, business meetings, and other large-scale functions.

## Excursions

### ◆ Statue of Luffy



As part of the One Piece Kumamoto Recovery Project, a statue of Luffy was installed on the promenade of the Kumamoto Prefectural Office in November 2018. The project was carried out with support from Eiichiro Oda, the creator of One Piece and a native of Kumamoto, along with publisher Shueisha, to support recovery efforts following the April 2016 Kumamoto Earthquakes.

Statues of other Straw Hat Pirate members have also been installed in various locations across Kumamoto Prefecture as part of the ongoing recovery initiative.

### ◆ Suizenji Jojuen Garden



Suizenji Jojuen Garden was built by the Hosokawa family, former rulers of the Kumamoto Domain, as a teahouse retreat. The garden is fed by spring water from Mount Aso and was designed to represent the 53 stations of the old Tokaido route. It offers scenic views throughout the year and can be used for outdoor gatherings. The Noh stage inside the garden can be used for both traditional performances and events like jazz concerts.



# 2

## Enjoy a Walkable MICE City ウォークアブルな MICEを楽しむ!

Walkable MICE is an initiative that promotes sustainable events by making use of Kumamoto's compact and walkable city layout.

### 《 Accessibility 》

Kumamoto-Jo Hall is directly connected to the airport limousine bus terminal, a shopping facility, and a hotel. Other MICE venues, hotels, shopping arcades, and tourist sites are also within walking distance. This reduces travel time between locations and meal breaks, which can support better time management and efficiency during events.

### 《 Environmental Considerations 》

Kumamoto-Jo Hall is located in central Kumamoto, with access to various transportation options such as buses and the city tram. This makes it possible to hold events with reduced environmental impact, including lower CO<sub>2</sub> emissions.

### 《 Improved Satisfaction 》

Kumamoto's compact city layout allows MICE participants to enjoy unique experiences, including sightseeing at Kumamoto Castle and Suizenji Jojuen Garden, shopping in the nearby arcade, and sampling local food and sake during event breaks. These experiences help enhance satisfaction.



"Kumamoto for SDGs" logo.

## Kumamoto's Commitment to SDGs (Sustainable Development Goals)

The City of Kumamoto is actively working toward a sustainable future and was recognized as an "SDGs Future City" by the Cabinet Office in 2019. The city is addressing key local issues across environmental, economic, and social areas while taking a global approach. By applying the principles of the SDGs to all of its initiatives, Kumamoto aims to create a city that people want to live in, visit, and experience, focusing on a high quality of life for all.

### First in Japan to win the GDS Award

At the GDS Awards ceremony Kumamoto City staff smiling with award winners from other cities



GDS stands for "Global Destination Sustainability," a program aimed at promoting sustainable practices in international conferences, exhibitions, and other MICE events. The city of Kumamoto has been participating since 2023. This year, Kumamoto, along with the Kumamoto International Tourism and Convention Association, received the "Most Improved Destination Award 2024," one of the four GDS Awards. This award is given to the city with the greatest improvement in the GDS Index compared to the previous year. It is the first time a Japanese city has won the GDS Award.

## Efforts to Promote SDGs

### Enhancing Local Disaster Resilience

The Cabinet Office recognizes particularly innovative efforts within the "SDGs Future City" initiative as "Local Government SDGs Model Projects." The City of Kumamoto was selected for this program in 2019. The project focuses on improving disaster resilience by applying lessons learned from the 2016 Kumamoto Earthquakes, with an emphasis on community-driven development and strengthening vital infrastructure.

### Efforts to Reduce Food Waste

Stores that participate in reducing food waste are registered as "Zero Food Waste Partner Stores." These stores display stickers to show their involvement and receive educational materials to use in-store. As part of the "Reducing Food Waste from Stores" initiative, the city encourages both residents and visitors to help reduce food waste.

### Fair Trade City Kumamoto

In June 2011, Kumamoto became the first city in Japan, the first in Asia, and the 1,000th city in the world to be recognized as a Fair Trade City. This means the city supports fair trade, which promotes equal and just trade practices to help create societies without poverty.

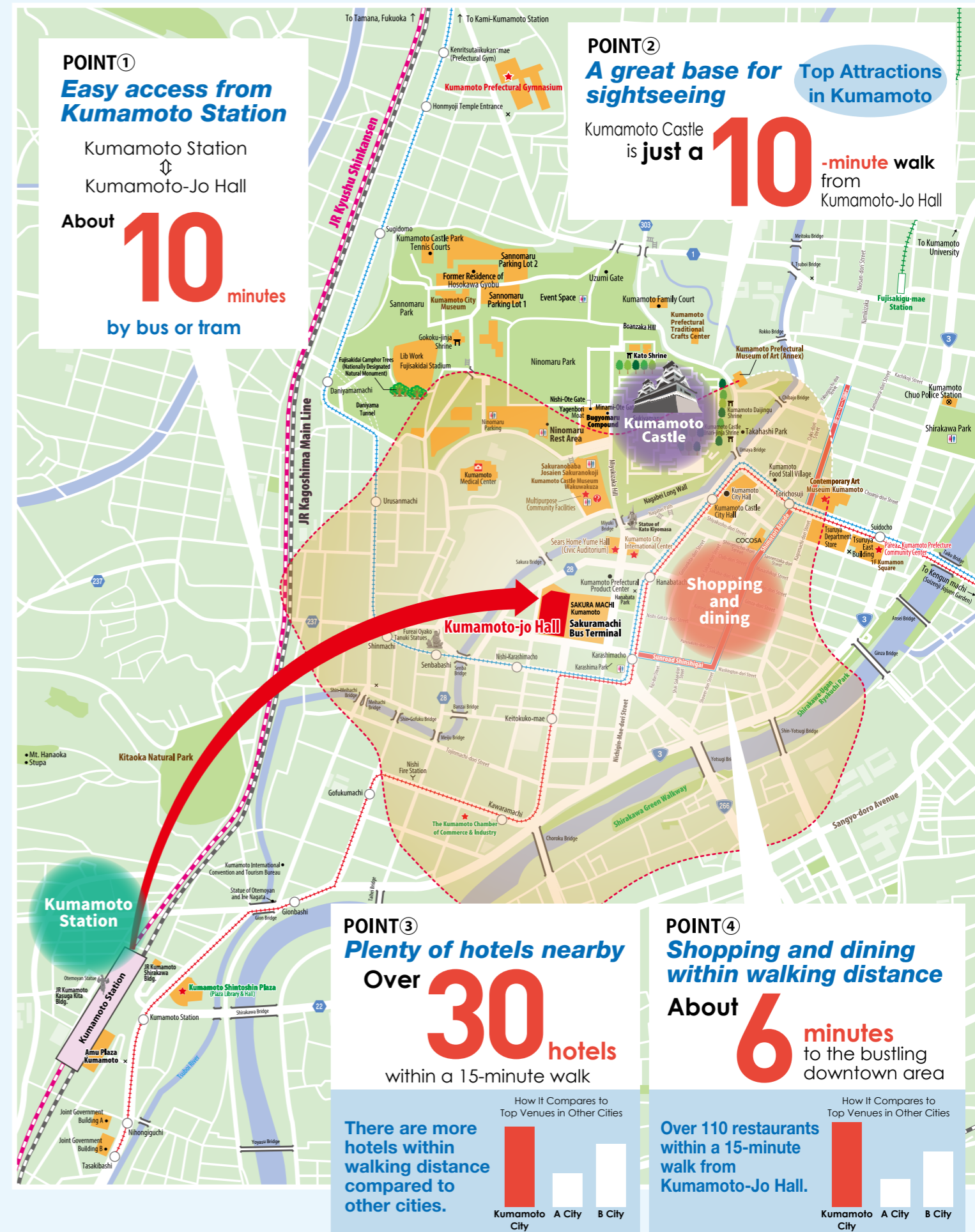
## Sustainable MICE Facilities at Kumamoto-Jo Hall

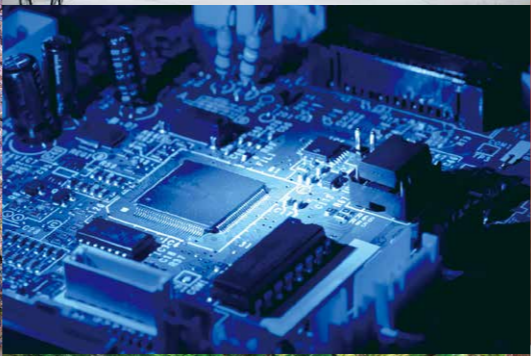
We have created a leaflet to provide clear information on sustainable convention planning, preparation, and hosting at Kumamoto-Jo Hall. It supports both MICE organizers and businesses in their sustainability efforts and aims to raise awareness. The leaflet includes details on the sustainable initiatives at Kumamoto-Jo Hall and Kumamoto's efforts, along with tips and ideas for hosting sustainable events.



- ※ • Multilingual signage using digital displays and paperless operations
- Use of eco-friendly interior materials for room management and provision
- Provision of supplies to those unable to return home during large-scale disasters

## Kumamoto-Jo Hall: Everything Within Walking Distance





## Umakamon: Kumamoto's Local Dishes That Make You Smile.

Kumamoto, blessed with nature, is home to a wide variety of umakamon—delicious local specialties. Each dish is prepared with seasonal ingredients and heartfelt hospitality.



## Kumamoto offers a wealth of attractions.

With landmarks like Kumamoto Castle, visitors are sure to have lasting memories.



### Diverse Tourist Attractions

#### Kumamoto Castle

Kumamoto Castle, one of Japan's three famous castles, is known for its unique *musha-gaeshi* stone walls, which curve upward as you go higher. The castle's keep, restored after the 2016 earthquake, is also a major highlight. With each season bringing a new look, Kumamoto Castle is a place to enjoy year-round.

#### Aso

Mount Aso is undoubtedly the defining landmark of the region and one of the largest active volcanoes in the world. It features a massive caldera and distinctive landscapes shaped by volcanic activity. The surrounding area is home to numerous hot spring resorts and a variety of accommodations, making it a convenient and accessible destination for visitors.

#### Amakusa

Amakusa is connected to mainland Kyushu by five bridges known as the Amakusa Gokyo. The island offers year-round dolphin watching and is where one of Japan's largest carnivorous dinosaur fossils was discovered. It also has facilities that explain the region's Christian history and influence from early European contact. Local seafood and mountain produce can be enjoyed throughout the year.

### Access to Quality Healthcare and Higher Education

Kumamoto University's medical school has a solid track record in treating and researching various difficult diseases, and has recently been focusing more on preventive medicine. The city also has hospitals with strengths in different specialties, supporting the health of local residents.

Kumamoto has 10 national, public, and private universities, along with technical colleges and vocational schools. These institutions offer quality education and aim to prepare students for work in a global environment.

### Industrial Growth Supported by Abundant Groundwater

From Kumamoto to the world. As global industries continue to grow, businesses in Kumamoto are expanding their roles in fields like semiconductors, robotics, and automobiles. The arrival of a major international semiconductor manufacturer has also led to development in nearby cities and the growth of related industries. Kumamoto ranked fifth in Japan for agricultural output in 2022. All of these industries are supported by groundwater from the Aso region, which received the United Nations "Water for Life" Best Practice Award in 2013. It is one of Kumamoto's most valuable resources and a point of pride for the region.

### Exceptional Cuisine Nurtured by Nature

#### ① Kumamoto Ramen

The ramen features a mild, well-balanced broth made from a blend of pork and chicken stock. It pairs well with medium-thick straight noodles. The soup is topped with fragrant garlic oil and crispy fried garlic, adding a subtle but distinctive flavor.

#### ② Sushi

Amakusa's seafood is well known and even draws visitors from outside the region, including public figures. You can enjoy the same high-quality, seasonal seafood right in central Kumamoto, with fresh fish delivered directly from Amakusa. It's a satisfying experience, both visually and in taste.

#### ③ Local Sake

Kumamoto has the right conditions for making sake, with clean, plentiful water and quality rice. Skilled producers use these ingredients to make good sake, combining traditional methods with modern techniques.

#### ④ Akaushi Done

This rice bowl features Akaushi beef raised in the wide-open natural environment of Aso. The combination of beef and rice makes for a satisfying meal. With its tender texture and rich flavor, it is a popular choice for meat lovers.

# 3

## A City Brimming With Allure

### 魅力あふれる都市!

# Convention Support

The Kumamoto International Convention and Tourism Bureau offers a variety of support plans to help you host your convention successfully in Kumamoto.

Robust support with a range of grants to help host your event

Support Scheme	Conditions	Funding limit
<b>Convention Hosting Grant</b>	Available for academic conferences, conventions, or meetings at the regional level or above, with 30 or more individual participants from outside Kumamoto Prefecture staying overnight at hotels in Kumamoto.	¥1,000,000
<b>Local Performing Arts Grant</b>	Available for international, national, or Western Japan-level events held in the City of Kumamoto, with at least 100 in-person participants from outside Kumamoto Prefecture and a combined total of 30 or more guests booked at hotels in the city. The event must include a performance of traditional performing arts from Kumamoto Prefecture.	¥50,000
<b>Shuttle Bus Grant</b>	Available for regional-level events (Kyushu or higher) such as conferences, conventions, or academic meetings with at least 300 in-person participants, and a combined total of 30 or more guests booked at hotels in Kumamoto by attendees from outside the prefecture. The grant supports shuttle bus services between venues or for excursions.	¥300,000
<b>Convention Staff Employment Grant</b>	Available for academic conferences, conventions, or meetings with 300 or fewer participants that qualify for the Convention Hosting Grant. This grant supports the cost of newly hiring dedicated staff for 10 or more days to assist with event preparation and operations.	¥180,000
<b>Convention Bid Support Grant</b>	Available for academic conferences, conventions, or meetings that qualify for the Convention Hosting Grant, where the host city has not yet been decided, and the City of Kumamoto or the Kumamoto International Tourism and Convention Association is actively seeking to host the event.	Max. ¥12,000,000

※For further information and eligibility criteria, please get in touch with the Kumamoto International Tourism and Convention Association.

## Event Planning Support



We provide tailored venue recommendations based on your event's scale, purpose, and budget. We also assist with priority reservations at select public facilities and can connect you with local vendors and organizations essential to your event's success.

## Brochures, Convention Bags & Delegate Gifts



We offer a selection of local tourism brochures for your attendees, along with convention bags (available for purchase). We can also propose a range of delegate gifts tailored to your budget and event needs.

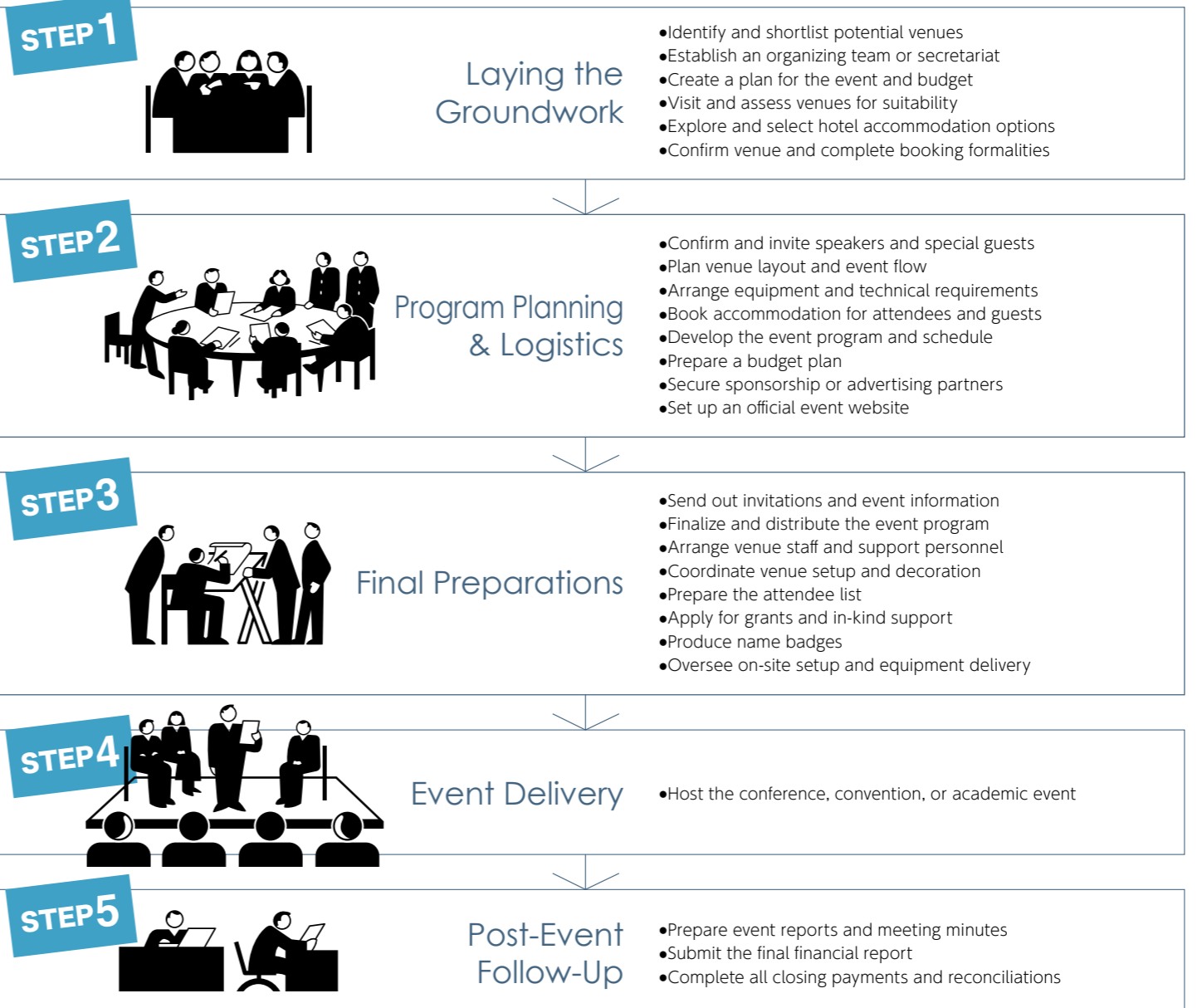
## Welcome Tools to Enhance Your Event



We can provide welcome signage for venues, airports, and train stations, as well as lend items like banners. We can also introduce local volunteer staff to help support your event.

## Planning Your Convention: Step-by-Step

Hosting a convention involves several key arrangements. We are here to support organizers every step of the way by introducing trusted service providers and offering expert guidance throughout the planning process.



### <Domestic Conferences>

September 19-23, 2023	<b>84th Autumn Conference of the Japan Society of Applied Physics</b>	Approx. 6,000 attendees
May 31st - June 2nd, 2024	<b>24th Annual Meeting of the Japanese Society of Anti-Aging Medicine</b>	Approx. 6,000 attendees
September 6-8, 2024	<b>88th Annual Conference of the Japanese Psychological Association</b>	Approx. 3,000 attendees

### <International Conferences>

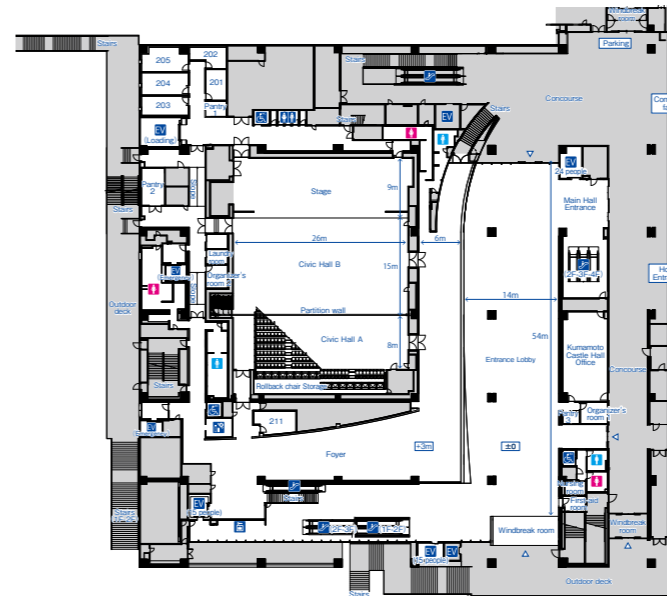
April 19-21, 2023	<b>International Conference on Electronics Packaging (ICEP) 2023</b>	Approx. 600 attendees (including around 150 international participants)
August 29-31, 2023	<b>17th International Conference on Innovative Computing, Information and Control (ICICIC)</b>	Approx. 300 attendees (including around 240 international participants)
July 8-12, 2024	<b>40th ASEAN+3 Bond Market Forum (ABMF)</b>	Approx. 300 attendees (including around 200 international participants)

# Central Kyushu's Leading Destination for Conventions and Entertainment

## 1 KUMAMOTO-JO HALL 熊本城ホール

熊本城ホール

Opened in December, 2019, Kumamoto-Jo Hall is a contemporary, fully equipped convention center located in the heart of the city. Its versatile halls and meeting rooms foster community engagement and can accommodate up to 3,000 attendees on-site, or up to 5,000 in coordination with nearby venues. With a bus terminal, hotel, retail facilities, and parking lot all integrated, the hall offers excellent accessibility and convenience. Guests can also enjoy stunning views of Kumamoto Castle, combining functionality with a uniquely local experience.



## 2F CIVIC HALL シビックホール

### Multi-Purpose Event Space With Movable Seating

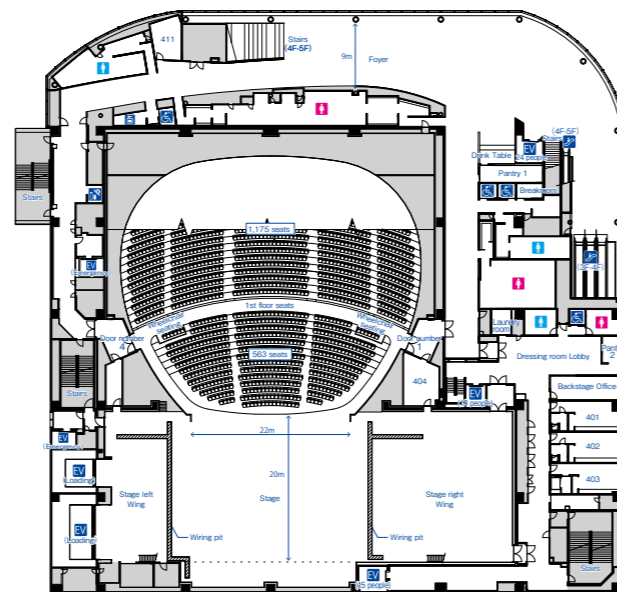
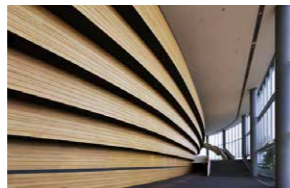
Designed for versatility, this event space features movable seating, sound systems, and rigging options such as battens and trusses for lighting and staging. It is ideal for concerts, fashion shows, ceremonies, exhibitions, and conferences, allowing flexible layouts and dynamic event production.



## 4F MAIN HALL メインホール

A 2,304-seat Main Hall—among the largest in Kyushu

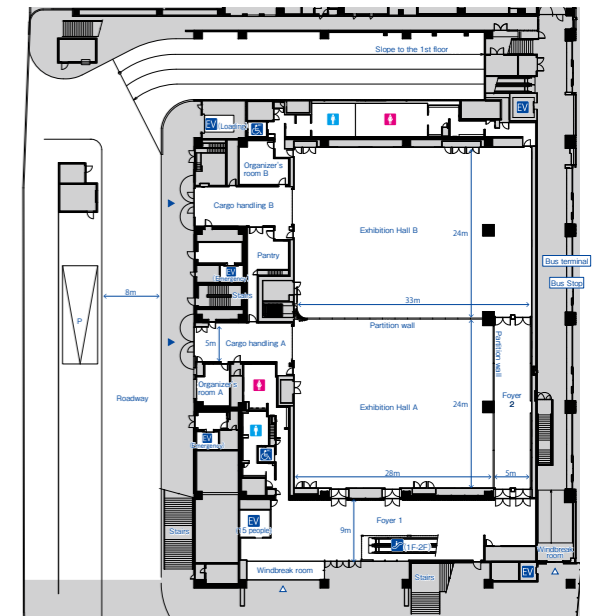
The iconic Main Hall of Kumamoto-Jo Hall boasts 2,304 fixed seats, making it one of the largest-capacity venues in Kyushu. This expansive space is ideal for a wide variety of events, from concerts to symposiums. The foyer, with panoramic views of Kumamoto Castle and the city center, also serves as a setting for receptions.



## 1F EXHIBITION HALL 展示ホール

### Spacious 1,630 m<sup>2</sup> Exhibition Hall With 6 m Ceilings and Direct Vehicle Access

Located on the first floor of Kumamoto-Jo Hall, this spacious exhibition area can be split into two sections and supports vehicle access for trucks up to 11 tons. With direct access from outside, it attracts passersby and brings added vibrancy to the city center.



## 3F CONFERENCE ROOMS 会議室

Versatile Meeting Room Floor With 19 Configurable Spaces

This flexible floor features 19 meeting rooms of various sizes, including a 1,200 m<sup>2</sup> hall that can be divided into four sections. Rooms can be joined or separated to suit your event size and format, making it ideal for everything from seminars to exhibitions. With high adaptability, the space supports a wide range of layouts and uses.



Venue Name	Maximum Capacity			Area (m <sup>2</sup> )	Rates				Notes
	Theater style	School style	Standing reception		9:00~12:00	13:00~17:00	18:00~22:00	9:00~22:00	
Event and Exhibition Hall (Full layout)	1,656	900	750	—	¥111,000	¥148,000	¥148,000	¥481,000	※Higher rates apply on Saturdays, Sundays, public holidays, and for commercial use.
Civic Hall (Full layout)	768	420	300	Approx. 840m <sup>2</sup>	¥69,000	¥92,000	¥92,000	¥299,000	※Higher rates apply on Saturdays, Sundays, public holidays, and for commercial use.
Conference Rooms A1 to A4 (4 rooms)	1,208	900	540	1,200m <sup>2</sup>	¥126,000	¥168,000	¥168,000	¥546,000	※When using four rooms combined. ※Higher rates apply on Saturdays, Sundays, public holidays, and for commercial use.
Conference Rooms B1 to B3 (3 rooms)	194	156	80	270m <sup>2</sup>	¥26,100	¥34,800	¥34,800	¥113,100	※When using three rooms combined. ※Higher rates apply on Saturdays, Sundays, public holidays, and for commercial use.
C1 to E2 Conference Rooms (6 rooms)	128	72	60	140m <sup>2</sup>	¥15,800	¥21,000	¥21,000	¥68,200	※When using two rooms combined. ※Higher rates apply on Saturdays, Sundays, public holidays, and for commercial use.
F1 to H2 Conference Rooms (6 rooms)	40	24	30	60m <sup>2</sup>	¥6,600	¥8,800	¥8,800	¥28,600	※When using two rooms combined. ※Higher rates apply on Saturdays, Sundays, public holidays, and for commercial use.
Main Hall (Full layout)	2,304	—	—	—	¥117,000	¥156,000	¥156,000	¥429,000	※Higher rates apply on Saturdays, Sundays, public holidays, and for commercial use.

For detailed pricing, please contact Kumamoto-Jo Hall (TEL 096-312-3737).

MAP  
20p

## 2 Civic Auditorium Sears Home Yume Hall

市民会館シアーズホーム夢ホール

1-3 Sakuramachi, Chuo-ku,  
Kumamoto City 860-0805  
TEL.096-355-5235 FAX.096-355-5239



Venue Name	Maximum Capacity		Area (m <sup>2</sup> )	Rates			Notes
	Theater style	School style		9:00~12:00	13:00~17:00	18:00~21:00	
Main Hall	1,591	—	1,760	¥26,000~	¥52,000~	¥65,000~	※Fixed seating ※Higher rates on Saturdays and Sundays
Large Conference Room	252	50	350	¥6,500~	¥8,700~	¥10,400~	※Higher rates on Saturdays and Sundays
Conference Room 1	20	20	40	¥1,300	¥1,600	¥2,000	
Conference Room 2	20	20	40	¥1,300	¥1,600	¥2,000	
Conference Room 3 and 4	40	20/20	80	¥2,600	¥3,200	¥4,000	※Dividable into two sections
Conference Room 5 and 6	60	20/40	136	¥3,900	¥5,100	¥6,100	※Dividable into two sections
Conference Room 7	40	40	96	¥2,600	¥3,500	¥4,100	
Conference Room 8	20	20	40	¥1,300	¥1,600	¥2,000	
Conference Room 9	40	40	80	¥2,600	¥3,500	¥4,100	
Conference Room 10	20	—	21 tatami mats	¥2,600	¥3,500	¥4,100	※Japanese style room

MAP  
20p

## 4 Parea-Kumamoto Prefectural Center

くまもと県民交流館パレア

8-9 Tetorihoncho, Chuo-ku,  
Kumamoto City 860-8554  
TEL.096-355-4300 FAX.096-355-4318



Venue Name	Maximum Capacity		Area (m <sup>2</sup> )	Rates			Notes
	Theater style	School style		9:00~12:00	13:00~17:00	18:00~21:00	
Conference Room 1	150	123	206	¥8,700~	¥11,600~	¥8,700~	※Usage fees are doubled for commercial purposes ※Please contact us for information on overtime charges.
Conference Room 2	54	45	101	¥4,400~	¥5,800~	¥4,400~	
Conference Room 3	54	45	103	¥4,400~	¥5,800~	¥4,400~	
Conference Room 4	54	45	102	¥4,400~	¥5,800~	¥4,400~	
Conference Room 5	10	10	36	¥1,600~	¥2,100~	¥1,600~	
Conference Room 6	24	24	63	¥2,700~	¥3,600~	¥2,700~	
Conference Room 7	60	54	113	¥4,800~	¥6,400~	¥4,800~	
Conference Room 8	60	54	112	¥4,800~	¥6,400~	¥4,800~	
Conference Room 9	42	36	84	¥3,500~	¥4,700~	¥3,500~	
Hall	382	312	558	¥23,700~	¥31,700~	¥23,700~	
Music Room 1	—	—	100	¥4,200~	¥5,700~	¥4,200~	
Music Room 2	—	—	40	¥1,700~	¥2,200~	¥1,700~	
Japanese-style room	—	—	162	¥6,900~	¥9,200~	¥6,900~	
Multi-Purpose Studio	—	—	51	¥2,200~	¥2,900~	¥2,200~	

MAP  
20p

## 3 Kumamoto City International Center

熊本市国際交流会館

4-18 Hanabatacho, Chuo-ku,  
Kumamoto City 860-0806  
TEL.096-359-2020 FAX.096-359-5783



Venue Name	Maximum Capacity		Area (m <sup>2</sup> )	Rates			Notes
	Theater style	School style		9:00~12:00	13:00~17:00	18:00~21:00	
6・7F Hall	120	120	244.4	¥6,000~	¥9,000~	¥12,000~	※Mobile chairs with casters ※Food and drink are permitted only when seating is arranged on a flat floor. ※Higher rates on Saturdays, Sundays and public holidays. ※Additional charges apply for commercial use or ticketed events.
5F Large Japanese-Style Room(A,B)	108	108	117.9	¥8,000~	¥10,700~	¥12,800~	※Partition possible ※No shoes allowed ※Additional charges apply for commercial use or ticketed events.
5F Small Meeting Room (Western Style)	16	16	35.5	¥1,700~	¥2,300~	¥2,700~	
4F Conference Room 1	45	45	75.3	¥3,600~	¥4,800~	¥5,800~	
4F Conference Room 2	32	32	71.6	¥3,400~	¥4,500~	¥5,400~	
4F Conference Room 3	81	81	132.8	¥6,800~	¥8,800~	¥10,800~	※Additional charges apply for commercial use or ticketed events.
3F Training Room 1	24	24	56.9	¥2,300~	¥3,000~	¥3,700~	※Other venues are also available.
3F Training Room 2	12	12	29.4	¥1,200~	¥1,500~	¥1,900~	
3F Training Room 3	24	24	44.5	¥1,800~	¥2,400~	¥2,900~	

MAP  
19p

## 5 Kumamoto Shintoshin Plaza

熊本森都心プラザ

1-14-1 Kasuga, Nishi-ku,  
Kumamoto City 860-0047  
TEL.096-355-7400 FAX.096-355-7410



Venue Name	Maximum Capacity		Area (m <sup>2</sup> )	Rates			Notes
	Theater style	School style		9:00~12:00	13:00~17:00	18:00~22:00	
Plaza Hall	489	180	350	¥9,800~	¥14,600~	¥19,600~	※Higher rates on Saturdays, Sundays and public holidays ※Usage fees are doubled for commercial purposes
Multi-Purpose Room	90	90	120	¥3,600~	¥4,700~	¥5,700~	※A discount is available when booked together with the Main Hall ※Usage fees are doubled for commercial purposes
Conference Room A	45	45	77	¥2,400~	¥3,100~	¥3,800~	※Usage fees are doubled for commercial purposes
Conference Room B	45	45	83	¥2,600~	¥3,400~	¥4,100~	
Conference Room C	36	36	62	¥1,900~	¥2,500~	¥3,100~	
Conference Room D	30	30	54	¥1,600~	¥2,100~	¥2,500~	

MAP  
20p

## 6 Hotel Nikko Kumamoto

ホテル日航熊本

2-1 Kamitoricho, Chuo-ku,  
Kumamoto City 860-8536  
TEL.096-211-1111 FAX.096-211-1175



Venue Name	Maximum Capacity				Area (m <sup>2</sup> )	Rates 2h(tax and service charges are not included)	Notes
	Theater style	School style	Standing reception	Plated banquet			
ASO	1800	1000	1500	840	1,500	¥900,000	※Dividable venue
AMAKUSA	700	450	450	300	600	¥360,000	※Dividable venue
Private Banquet Higo	200	100	120	80	195	¥117,000	※Dividable venue
Garden Banquet "Sora"	200	105	120	80	200	¥150,000	
UME	50	30	30	30	50	¥30,000	※Dividable venue
MOMO	50	30	30	30	50	¥30,000	※Dividable venue
FUJI	50	30	30	30	50	¥30,000	※Dividable venue
YURI	—	—	—	—	20	¥12,000	

MAP  
20p

## 7 Kumamoto Hotel Castle

熊本ホテルキャッスル

4-2 Jyoto-machi, Chuo-ku,  
Kumamoto City 860-8565  
TEL.096-326-3311 FAX.096-326-3324



Venue Name	Maximum Capacity			Area (m <sup>2</sup> )	Rates 2h(tax and service charges are included)	Notes
	Theater style	School style	Standing reception			
Castle Hall A	470	250	300	372	¥566,280	※Can be split into four sections
Castle Hall B	400	200	180	288		
Castle Hall C	180	100	90	150		
Castle Hall D	180	100	90	150		
Crystal hall A	164	80	120	160	¥205,700	※Can be split into two sections
Crystal hall B	185	120	150	200		

MAP  
20p

## 8 KKR Hotel Kumamoto

KKRホテル熊本

3-31 Chibajyo-machi, Chuo-ku,  
Kumamoto City 860-0001  
TEL.096-355-0121 FAX.096-355-7956



Venue Name	Maximum Capacity				Area (m <sup>2</sup> )	Rates 2h(tax included / service charge is not included)	備考
	Theater style	School style	Standing reception	Plated banquet			
GOHOU&JOUSAI	700	360	400	350	612	¥225,000	
GOHOU	400	160	180	160	324	¥117,000	
JOUSAI	330	140	160	130	288	¥108,000	
ARIAKE&SHIRANUI	220	105	120	120	241	¥75,600	
ARIAKE	100	60	60	60	115	¥37,800	
SHIRANUI	100	60	60	60	115	¥37,800	
AMAKUSA	100	60	60	60	118	¥37,800	
KINPOU&ICHIFUSA	120	70	60	60	160	¥54,000	※Overlooks Kumamoto Castle
ROSE ROOM	160	90	100	90	179	¥57,600	

MAP  
19p

## 9 ANA Crown Plaza Kumamoto New Sky

ANAクラウンプラザホテル熊本ニュースカイ

2 Higashiamidazi-machi, Chuo-ku,  
Kumamoto City 860-8575  
TEL.096-354-2111 FAX.096-354-8973



Venue Name	Maximum Capacity				Area (m <sup>2</sup> )	Rates 2h(tax excluded / service charge is included)	Notes
	Theater style	School style	Standing reception	Plated banquet			
1F Wakakusa	200	140	180	150	220	¥36,655	
2F Strings	1,200	800	1,000	700	1,000	¥165,500	※Can be split into three sections
2F Heian	200	140	180	150	210	¥35,000	
2F Andante	180	140	180	150	180	¥30,755	※Can be split into three sections
2F Manyou	80	80	100	70	120	¥19,655	※Can be split into two sections
6F Arche	400	270	300	250	310	¥50,800	※Can be split into two sections
24F Sky Terrace	190	120	150	120	210	¥49,500	
25F Blanc Mure	—	—	150	130	225	¥49,500	

MAP  
20p

## 10 Hotel Mielparque Kumamoto

ホテルメルパルク熊本

14-1 Suidoucho, Chuo-ku,  
Kumamoto City 860-8517  
TEL.096-355-6311 FAX.096-325-3573



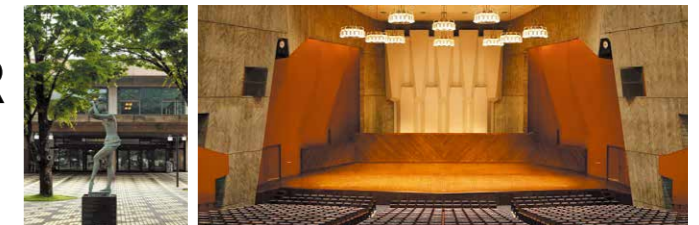
Venue Name	Maximum Capacity				Area (m <sup>2</sup> )	Rates 2h(tax and service charges are included)	Notes
	Theater style	School style	Standing reception	Plated banquet			
SHIRAKAWA	250	180	200	160	320	¥102,000	
KINPO(SHIRAKAWA1/2)	100	72	80	60	152	¥52,000	
TATSUDA(SHIRAKAWA1/2)	100	72	80	60	152	¥52,000	
ARIAKE	160	120	120	100	214	¥75,000	
ASO	600	450	500	320	623	¥205,000	
TAKADAKE(ASO1/2)	250	180	200	160	306	¥102,000	
NAKADAKE(ASO1/2)	250	180	200	160	306	¥102,000	
KISHIMADAKE(TAKADAKE1/2)	100	72	80	60	145	¥52,000	
EBOSHIDAKE(TAKADAKE1/2)	100	72	80	60	148	¥52,000	
NEKODAKE(ASO3/4)	450	306	300	240	465	¥154,000	

MAP  
21p

## 11 Kumamoto PREFECTURAL THEATER

熊本県立劇場

2-7-1 Ooe, Chuo-ku,  
Kumamoto City 862-0971  
TEL.096-363-2233 FAX.096-371-5246



Venue Name	Maximum Capacity		Area (m <sup>2</sup> )	Rates / Full-day rental	Notes
	Theater style	School style			
Concert Hall	1,810	—	1,260	¥196,900	※Weekday rate (for admission fees up to ¥1,000)
Theater Style Hall	1,172	—	780	¥167,200	※Weekday rate (for admission fees up to ¥1,000)
Large Conference Room	380	162	390	¥72,600	※Noncommercial use

# List of Other Convention Facilities その他コンベンション関連施設一覧

Area	Facilities	Maximum venue capacity	Maximum venue area(m)	Number of Additional Venues	Time-Based Rates	Address & Contact Details	Notes
Kumamoto Castle Area	12 Contemporary Art Museum, Kumamoto 熊本市現代美術館	90	145	1	¥2,850~/1h	3F Bipuresu Kumanichi, 2-3 Kamitori-cho, Chuo-ku 860-0845 TEL:096-278-7500 FAX:096-359-7892	※Usage fees double when admission is charged
	13 Sakuranobaba Josaien Multi-purpose Community Center 桜の馬場城彩苑多目的交流施設	144	148.96	2	¥7,900/3h	1-1-1 Ninomaru, Chuo-ku 860-0008 TEL:096-288-5600 FAX:096-288-0808	
	14 ARK HOTEL KUMAMOTO JOMAE アークホテル熊本城前	180	190	1	¥20,000/1h	5-16 Jyoto-machi, Chuo-ku 860-0846 TEL:096-351-2222 FAX:096-326-0909	
	15 TKP Garden City NestHotel Kumamoto TKPガーデンシティ ネストホテル熊本	120	186	4	¥19,500/1h	4-39 Karashima-cho, Chuo-ku 860-0804 TEL:096-312-5815	
	16 Mitsui Garden Hotel Kumamoto 三井ガーデンホテル熊本	150	190	0	¥56,000/2h	1-20 Kouyaima-machi, Chuo-ku 860-0012 TEL:096-352-1154 (Banquet direct line)	※Can be split into three sections (A:70m, B:50m, C:70m)
	17 KUMAMOTO WASUKI TSUKASAKAN 熊本和数奇司館	120	165	8	¥4,500~/1h	7-35 Kamitori-cho, Chuo-ku 860-0845 TEL:096-352-5101 FAX:096-354-8105	
	18 The Kumamoto Chamber of Commerce & Industry 熊本商工会議所	130	232.5	3	¥92,000~/日	10 Kouyaima-machi, Chuo-ku 860-8547 TEL:096-354-6688 FAX:096-354-8890	
	19 Kumamoto City Gender Equality Center HARMONY 熊本市男女共同参画センターはあもにい	372	690	6	¥18,800/8h	3-3-10 Kurokami, Chuo-ku 860-0862 TEL:096-345-2550 FAX:096-345-0373	
	20 THE NEWHOTEL KUMAMOTO ザ・ニューホテル熊本	600	594	7	¥240,000/2h	1-13-1 Kasuga, Nishi-ku 860-0047 TEL:096-326-1111 FAX:096-326-0800	
Suizenji Area	21 Ryotei Matsuyahonkan Suizenji 旅亭 松屋本館 Suizenji	120	145	1	¥30,000/2h	23-1 Suizenji-kouen, Chuo-ku 862-0956 TEL:096-381-1331 FAX:096-381-1332	
	22 HOTEL KUMAMOTO TERRSA ホテル熊本テルサ	700	613	17	¥36,300~/1h	28-51 Suizenji-kouen, Chuo-ku 862-0956 TEL:096-387-7777 FAX:096-387-7575	
	23 KUMAMOTO CITY GENERAL GYMNASIUM AND YOUTH CENTER 熊本市総合体育館・青年会館	4,200	1,900	10	¥10,190/1h	2-7-1 Izumi, Chuo-ku 862-0941 TEL:096-385-1010 FAX:096-381-0953	※Food and drink are permitted in the gymnasium only in the second-floor seating area or when the entire floor is covered. ※At the Youth Center, food and drink are allowed only as part of lunch served during lectures or similar events.
	24 Suizenji Kyosai Hall "Gracia" 水前寺共済会館グレースシア	260	246	8	¥41,250/2h	1-33-18 Suizenji, Chuo-ku 862-0950 TEL:096-383-1281 FAX:096-383-1285	
	25 Youthpia Kumamoto Kumamoto Seinenkaikan ユースピア熊本熊本県青年会館	180	125	7	¥68,200/8h	3-17-15 Suizenji, Chuo-ku 862-0950 TEL:096-381-6221 FAX:096-382-2715	
North	26 Kumamoto City UEKI CULTURE HALL 熊本市植木文化ホール	601	2176.8	5	¥6,900~/2h	238-1 Iwano, Ueki-machi, Kita-ku 861-0136 TEL:096-272-6906 FAX:096-272-6916	
	27 Food Exchange Hall 熊本市食品交流会館	400	547	6	¥7,100~/3h	581-2 Mitsugu-machi, Kita-ku 861-5535 TEL:096-245-5111 FAX:096-245-5122	
	28 Kikunanonsen Yuberu Hotel 菊南温泉ユウベルホテル	350	494	7	¥350,000/2h	3-10-1 Tsuruhada, Kita-ku 861-5517 TEL:096-344-5600 FAX:096-344-5554	※Free parking available (400 spaces) ※On-site spa facilities
East	29 Kumamoto Industrial Exhibition Center 熊本産業展示場 グランメッセ熊本	10,000	8,000	6	¥1,257,160/8h	1010 Fukudomi, Mashiki-machi, Kamimashiki-gun 861-2235 TEL:096-286-8000 FAX:096-286-1100	※The main hall and the large conference room can be divided ※2,200 parking spaces available
	30 Kumamoto City Kengun Culture Hal 健軍文化ホール	293	429.8	6	¥4,000~/3h	3-5-11 Wakaba, Higashi-ku 862-0903 TEL:096-368-1221 FAX:096-368-0330	※No dedicated parking on-site
South	31 Kumamoto City Distribution And Information Hall 熊本市流通情報会館	Please contact the venue directly for details	1,080	8	¥70,000~/3h	1-24 Ryutsudanchi, Minami-ku 862-0967 TEL:096-377-2091 FAX:096-377-2096	
	32 Kumamoto City Tomia Cultural Center 熊本市富合ホール	406	1,064	9	¥4,500~/3h	400 Kiyofuji, Tomiai-machi, Minami-ku 861-4151 TEL:096-357-4580 FAX:096-311-3056	
	33 Hinokimi Cultural Hall 火の君文化ホール	594	105	6	¥7,100~/3h	394-1 Minohara, Jyonan-machi, Minami-ku 861-4214 TEL:0964-28-1800 FAX:0964-28-1802	
	34 Kumamoto City Temmei Cultural Center 天明ホール	390	390	0	¥4,400~/3h	2035 Okoga-machi, Minami-ku 861-4125 TEL:096-223-0118 FAX:096-223-3275	※Includes 3 wheelchair-accessible seats

※Capacity, floor area, and rates are for the largest venue only. ※Rates and availability are subject to change. Please contact us for details.

# List of Accommodations (Near Kumamoto Castle) 宿泊施設一覧[中心部]

Category	HOTELS	TEL	Address	Rooms				P	Notes	
				S	T	W	Other			
1	B ARK HOTEL KUMAMOTO JOMAE	アークホテル熊本城前	096-351-2222	5-16 Jyoto-mach, Chuo-ku	135	85	2	1	有	
2	C KUMAMOTO HOTEL CASTLE	熊本ホテルキャッスル	096-326-3311	4-2 Jyoto-mach, Chuo-ku	78	80	12	9	有	
3	B KUMAMOTO WASUKI TSUKASAKAN	熊本和数奇司館	096-352-5101	7-35 Kamitoricho, Chuo-ku	0	16	27	16	無	※Partner parking information is available
4	B SOTETSU GRAND FRESA KUMAMOTO	相鉄グランドフレッサ 熊本	096-353-0203	2-2-23 Shimotori, Chuo-ku	0	63	184	0	無	※Partner parking information is available
5	B Mitsui Garden Hotel Kumamoto	三井ガーデンホテル熊本	096-352-1131	1-20 Kouyaima-machi, Chuo-ku	162	28	27	9	有	
6	B R&B Hotel Kumamoto Shimotori	R&Bホテル熊本下通	096-356-7272	2-2-18 Shimotori, Chuo-ku	221	0	0	0	無	
7	B KUMAMOTO GREEN HOTEL	熊本グリーンホテル	096-325-2222	12-11 Hanabatacho, Chuo-ku	71	7	0	0	無	
8	B Kumamoto Tokyu REI Hotel	熊本東急REIホテル	096-322-0109	7-25 Shinshigai, Chuo-ku	116	15	8	1	有	
9	B Washington Hotel Plaza Kumamoto	熊本ワシントンホテルプラザ	096-355-0410	2-3-10 Shimotori, Chuo-ku	300	50	0	0	有	
10	他 KKR HOTEL KUMAMOTO	KKRホテル熊本	096-355-0121	3-31 Chibajyo-machi, Chuo-ku	11	41	0	2	有	
11	B Comfort Hotel Kumamoto Shinshigai	コンフォートホテル熊本新市街	096-211-8411	2-10 Shinshigai, Chuo-ku	0	14	143	0	無	
12	他 Dyeing and Hotel NAKASHIMAYA	染物と宿の中島屋	096-202-2020	2-11-6 Shin-machi, Chuo-ku	0	0	0	7	無	※Women-only accommodation
13	B Natural Hot Spring Rokka no Yu Dormy inn Kumamoto	天然温泉 六花の湯 ドーミーイン熊本	096-311-5489	3-1 Karashimacho, Chuo-ku	17	33	186	55	有	
14	B Toyoko Inn Kumamoto Sakuramachi Bus Terminal Mae	東横イン熊本桜町バスターミナル前	096-351-1045	1-24 Kouyaima-machi, Chuo-ku	117	12	12	11	有	
15	B Toyoko Inn Kumamoto-jo Toricho Suji	東横イン熊本城通町筋	096-322-1045	1-1 Suidoucho, Chuo-ku	178	10	10	1	有	※Parking lot for 48 vehicles
16	B Toyoko Inn Kumamoto Shin-shigai	東横イン熊本新市街	096-324-1045	3-25 Shinshigai, Chuo-ku	167	13	26	14	有	
17	B Nest HOTEL Kumamoto	ネストホテル熊本	096-322-3911	4-39 Karashimacho, Chuo-ku	109	36	53	3	有	
18	C Grids Premium Hotel Kumamoto	グリッドプレミアムホテル熊本	096-312-2700	1-7 Kouyaima-machi, Chuo-ku	0	81	116	0	有	※9 spaces available, with partner parking lot nearby.
19	C Hotel Nikko Kumamoto	ホテル日航熊本	096-211-1111	2-1 Kamitoricho, Chuo-ku	31	105	49	6	有	※Affiliated parking lot available
20	B HOTEL HOKKE CLUB KUMAMOTO	ホテル法華クラブ熊本	096-322-5001	20-1 Toricho, Chuo-ku	54	49	41	3	有	
21	C Hotel Mielparque Kumamoto	ホテルメルパルク熊本	096-355-6311	14-1 Suidoucho, Chuo-ku	31	22	0	7	有	
22	B Richmond Hotel Kumamotoshinshigai	リッチモンドホテル熊本新市街	096-312-3511	6-16 Shinshigai, Chuo-ku	100	19	38	1	無	
23	B &and COMFY HOTEL Kumamotojo View	アンドコンフィホテル熊本城ビュー	096-311-7070	5-3 Jyoto-machi, Chuo-ku	35	20	42	1	無	
24	B Hotel Wing International Select Kumamoto	ホテルウィングインターナショナルセレクト熊本	096-325-1000	2-13 Suidoucho, Chuo-ku	0	29	123	0	有	
25	C KOKO HOTEL PREMIER KUMAMOTO	KOKO HOTEL Premier 熊本	096-355-6700	3-20 Sakura-machi, Chuo-ku	0	123	80	2		
26	B REF Kumamoto by VESSEL HOTELS	レフ熊本 by ベッセルホテルズ	096-328-7777	7-2 Shinshigai, Chuo-ku	117	100	9	3	有	※Affiliated parking lot available
27	B GR Hotel Ginzadori	ジーアールホテル銀座通	096-319-8888	7-11 Chuougai, Chuo-ku	32	14	24	0	有	※Parking lot for 12 vehicles

# List of Accommodations (Near Suizenji) 宿泊施設一覧[水前寺周辺]

Category	HOTELS	TEL	Address	Rooms				P	Notes	
				S	T	W	Other			
28	旅 Youthpia Kumamoto, Kumamoto Seinenkaikan	ユースピア熊本 熊本県青年会館	096-381-6221	3-17-15 Suizenji, Chuo-ku	0	2	0	12	有	
29	他 HOTEL KUMAMOTO TERRSA	ホテル熊本テルサ	096-387-7777	28-51 Suizenjikoen, Chuo-ku	47	10	0	5	有	※All rooms feature double beds. ※No smoking throughout.
30	B Smile Hotel Kumamoto Suizenji	スマイルホテル熊本水前寺	096-383-8410	1-2-20 Suizenjikoen, Chuo-ku	56	9	15	5	有	※Parking lot for 30 vehicle (¥800/car)
31	旅 Yuusenoyado Monohana	湧泉の宿 薬乃花	096-340-0727	6-74 Kuwamizuhon-machi, Chuo-ku	0	0	0	5	有	
32	旅 Ryotei Matsuyahonkan Suizenji	旅亭 松屋本館 Suizenji	096-381-1331	23-1 Suizenji, Chuo-ku	1	9	0	3	有	
33	B Matsuya Bekkan	松屋別館	096-213-1331	5-5-1 Suizenji, Chuo-ku	36	1	0	15	有	
34	他 Suizenji Mutual Aid Hall Gratia	水前寺共済会館グレースシア	096-383-1281	1-33-18 Suizenji, Chuo-ku	16	8	0	4	有	※Parking lot for 62 vehicles

# List of Accommodations (Near Kumamoto Station) 宿泊施設一覧[熊本駅周辺]

Category	HOTELS	TEL	Address	Rooms				P	Notes	
				S	T	W	Other			
35	C ANA CROWNE PLAZA KUMAMOTO NEW SKY	ANAクラウンプラザホテル熊本ニュースカイ	096-354-2111	2 Higashimidazi-machi, Chuo-ku	25	145	12	5	有	
36	B Super Hotel Lohas Kumamoto Natural Hot Springs	スーパーホテルLohas熊本天然温泉	096-351-9000	1-30-1 Uoya-machi, Chuo-ku	127	45	0	0	有	※Parking lot : ¥500/car
37	C THE NEW HOTEL KUMAMOTO	ONE STATION HOTEL KUMAMOTO (旧:ザ・ニューホテル熊本)	096-326-1111	1-13-1 Kasuga, Nishi-ku	0	40	80	3	有	※Affiliated parking lot available
38	B Toyoko Inn Kumamoto Ekimae	東横イン熊本駅前	096-351-1045	2-8-10 Kasuga, Nishi-ku	269	25	25	12	有	
39	旅 hotel honjin	ホテル本陣	096-354-9191	2-8-1 Nihongi, Nishi-ku	0	20	0	9	有	
40	B HOTEL ROUTE INN KUMAMOTO EKI MAE	ホテルルートイン熊本駅前	096-325-6511	1-14-19 Kasuga, Nishi-ku	79	64	27	0	有	※Complimentary breakfast.
41	C THE BLOSSOM KUMAMOTO	THE BLOSSOM KUMAMOTO	096-327-8763	3-15-26 Kasuga, Nishi-ku	0	74	127	2	無	※Affiliated parking lot available
42	B SUPER HOTEL KUMAMOTOEKIMAE TENNONSEN	スーパーホテル熊本駅前天然温泉	096-324-9000	2-15-23 Kasuga, Nishi-ku	0	34	52	14	有	※Affiliated parking lot available

# Suburbs 宿泊施設一覧[熊本市郊外]

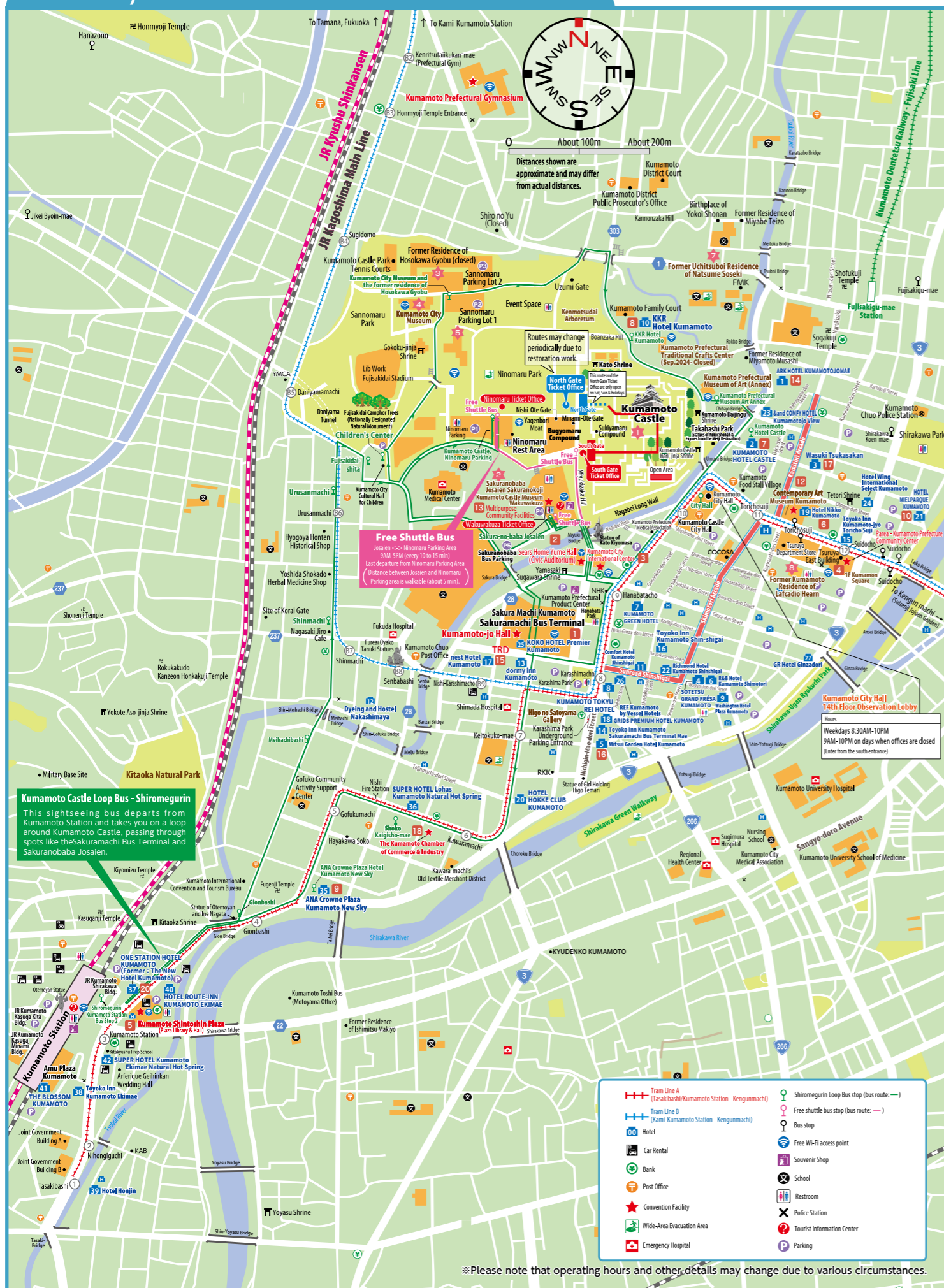
Category	HOTELS	TEL	Address	Rooms				P	Notes	
				S	T	W	Other			
43	旅 Kikunan Onsen UBL Hotel	菊南温泉ユウベルホテル	096-344-5600	3-10-1 Tsuruhada, Kita-ku	0	26	4	56	有	※Free parking (400 cars) ※On-site spa facilities.
44	B HOTEL PEACEFUL	ホテルピースフル	096-388-1188	3-11-136 Shimonabe, Higashi-ku	55	4	22	6	有	※The venue also features a banquet hall, restaurant, and additional spa facilities.
45	B AIRPORT HOTEL KUMAMOTO	エアポートホテル熊本	096-294-1111	1484 Muro, Odu-machi, Kikuchigun	37	64	3	2	有	

※Corporate Sponsors and Supporting Members of the Kumamoto International Tourism and Convention Association

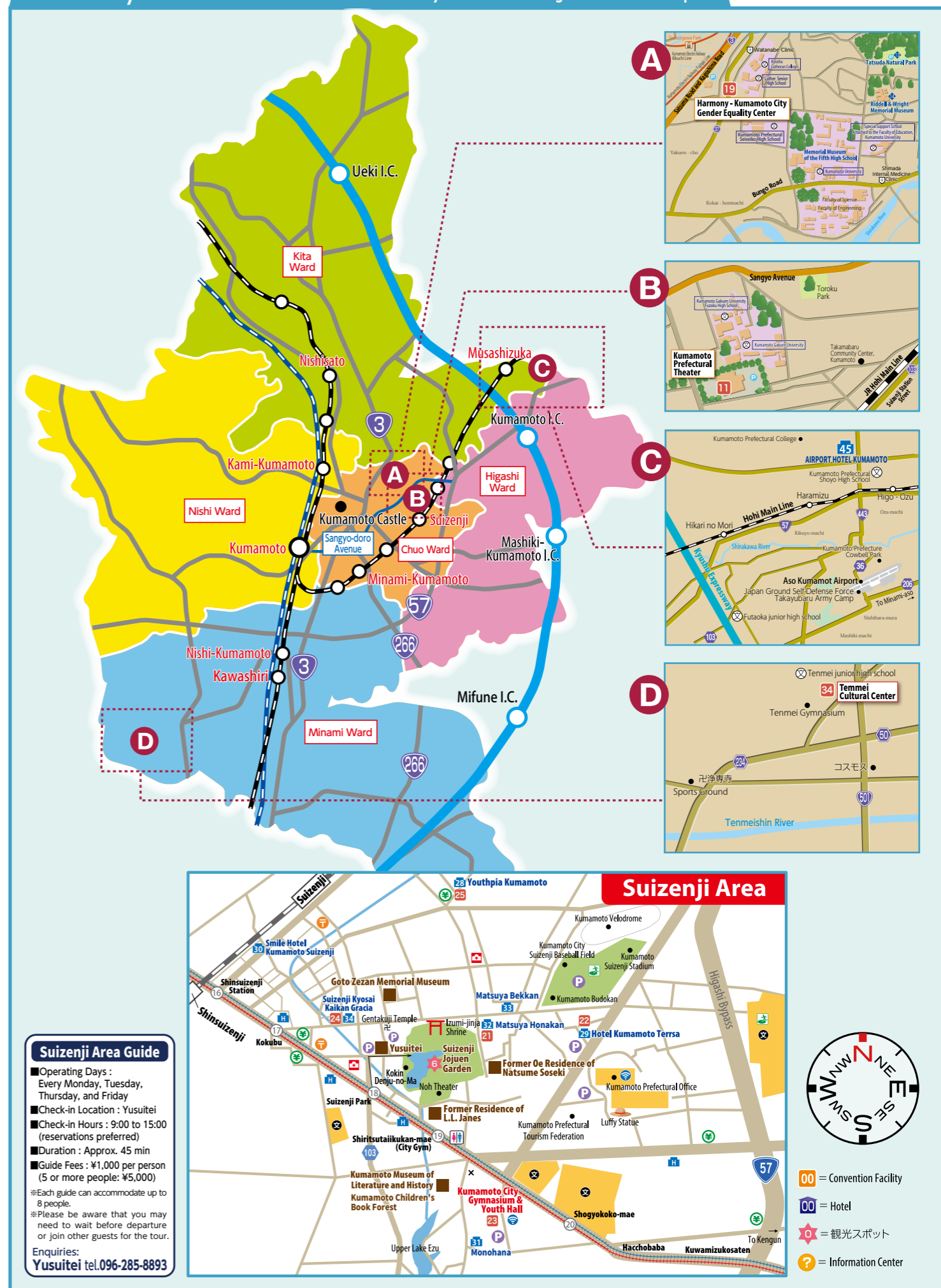
	Number of rooms	Capacity
Accommodation in Kumamoto, including the venues mentioned above	8,907	14,834

Data sourced independently (as of March 12, 2020)

# Facility Guide (Around Kumamoto Castle)



# Facility Guide (Kumamoto City & Suizenji Area Map)

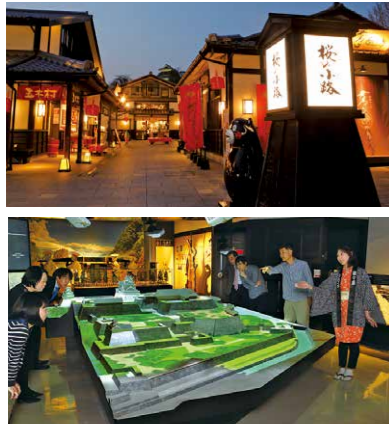


# Explore History and Culture at the Heart of Kumamoto Castle.

Kumamoto, with its historic castle town surrounding Kumamoto Castle, is home to key spots that are essential for anyone interested in the region's history and culture. If you have a little free time, why not take a walk and immerse yourself in the area's timeless charm?

## MAP 20 **2** Sakuranobaba Josaien

桜の馬場 城彩苑



Josaien is a multi-purpose complex located right by Kumamoto Castle. It's a hub for tourists, featuring an exciting virtual tour that lets you experience the grandeur of the historic Kumamoto Castle, along with dining and shopping options.

## MAP 20 **5** Kumamoto Prefectural Art Museum Eisei-Bunko Museum

熊本県立美術館 細川コレクション常設展示室(永青文庫)



※ The Hosokawa Collection is currently closed.  
This museum features treasures passed down through the Hosokawa family, which has a history of over 700 years. The exhibits include samurai weapons and armor, feudal lord's furnishings, early modern folding screens, and modern Japanese paintings from the Eisei-Bunko collection, with items being rotated and displayed regularly.

## MAP 21 **6** Suizenji Jojuen Park

水前寺成趣園



The garden, designed in the Momoyama style, was created as a tea garden for the ruling Hosokawa family of Kumamoto. The Kokindenju no Ma, originally part of the Hachijonomiya residence in Kyoto, was relocated and restored to its current location in the first year of the Taisho era. Inside, visitors can enjoy matcha tea and traditional Japanese treats.

## MAP 20 **7** Former Residence of Natsume Soseki

夏目漱石内坪井旧居



This was the fifth residence where Natsume Soseki, who spent four years and three months teaching at the Fifth High School (now Kumamoto University), lived. It was his favorite home and where he stayed the longest. The house now displays valuable materials related to Soseki.

## MAP 20 **8** Former Kumamoto Residence of Koizumi Yakumo

小泉八雲熊本旧居



Lafcadio Hearn (Koizumi Yakumo), the author of works like "The Story of the Headless Boy" and "Yuki-Onna", moved to Japan in 1891 to teach at the Fifth High School (now Kumamoto University). During his time here, he wrote many papers and novels.

## MAP 20 **3** Former Hosokawa Gyobu Mansion

旧細川刑部邸



The Hosokawa Gyobu family was founded by Gyobu Shoyu Okitaka, the younger brother of Hosokawa Tadatoshi, the third head of the Hosokawa family. The 300-tsubo (approximately 992 square meters) building radiates the prestige of one of Japan's highest-ranking samurai residences.

## MAP 20 **4** Kumamoto Museum

熊本博物館



The Kumamoto Museum, which reopened in December 2018, is a comprehensive museum showcasing both humanities and natural science collections, along with a planetarium. With the theme "Kumamoto's Memories, Bridging the Future," the museum offers insights into the history, culture, and natural heritage of Kumamoto.

Please note that some areas may not be open for public viewing. For more information, please visit the official website. <http://www.kumamoto-icb.or.jp/>



Kumamoto Castle

熊本城

MAP 20 **1**

Kumamoto Castle, one of Japan's three famous castles, was built by Kato Kiyomasa in 1607. It stands as a symbol of Kumamoto and is beloved by the local community. In 2008, over 400 years later, the main keep (Honmaru Goten) of the castle was restored, adding a new chapter to the history of this iconic landmark.

## 観光情報

## Tourist Information



### General

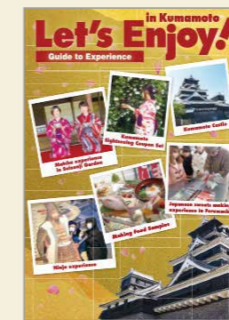


#### Kumamoto City Sightseeing Guide - Kuma-Bon

Discover Kumamoto's top attractions, including Kumamoto Castle and many more!



### Experience



#### Kumamoto Experience Programs

Enjoy unique local experiences and interact with the friendly people of Kumamoto through exciting activities.



### Local Cuisine



#### Kumamoto Food Guide

This guide offers information on restaurants, gift shops, and accommodations in Kumamoto.



### Map



#### Kumamoto City Tourist Guide Map

This map features tourist information for Kumamoto and is perfect for those who want to have it on their phone.



## Kumamoto Sightseeing Volunteer Guides

熊本観光ボランティアガイド

Reservations Required Three Days in Advance/  
Foreign Language Guidance Available



Historical sites, landmarks, and castle town tours in Kumamoto and the surrounding area, with tours tailored to your interests. The friendly, down-to-earth guides offer an experience full of laughter, surprises, and memorable moments.

### Bookings & Enquiries

Tel.096-356-2333

(Weekdays / 9:00 ~ 17:00)

(Weekends and Public Holidays / 9:00 ~ 16:00)

(Except Dec 29 to Jan 3)

Kumamoto SGG Club

# 食

## Cuisine

Kumamoto's food culture, shaped by its rich natural resources and pure spring water, has gained attention nationwide.

### Taipien 太平燕

Taipien is a Japanese adaptation of a Chinese dish. It features glass noodles with a variety of ingredients, making it a popular local specialty in Kumamoto.



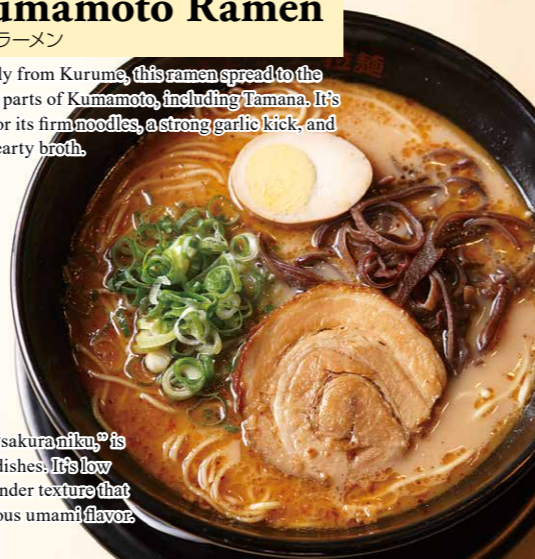
### Karashi Renkon からし蓮根

Passed down as a nourishing dish for the Kumamoto lords, Yamato-nabe is a local favorite. It's perfectly balanced with a spicy kick and the crisp texture of lotus root.



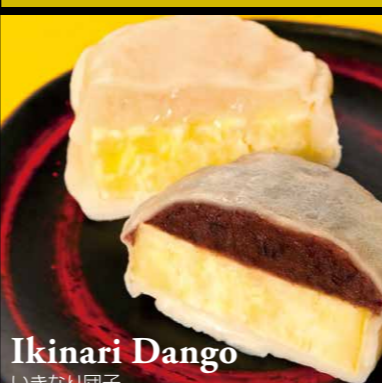
### Kumamoto Ramen 熊本ラーメン

Originally from Kurume, this ramen spread to the northern parts of Kumamoto, including Tamana. It's known for its firm noodles, a strong garlic kick, and a rich, hearty broth.



### Basashi 馬刺し

Horse meat sashimi, often called "sakuraniku," is one of Kumamoto's most famous dishes. It's low in fat, high in protein, and has a tender texture that melts in your mouth, with a delicious umami flavor.



### Ikinari Dango いきなり団子

This popular Kumamoto snack gets its name from the word *ikinari*, meaning "quickly," as it is quick to prepare. It's a simple, sweet dumpling made with sweet potatoes and red bean paste wrapped in a soft wheat flour dough.



### Higo Inlay 肥後象がん

Higo Zogan (traditional Japanese inlay work) is a nationally recognized traditional craft known for its blend of subtlety and elegance. This historic inlay technique is now also used in modern items like tie pins and earrings.

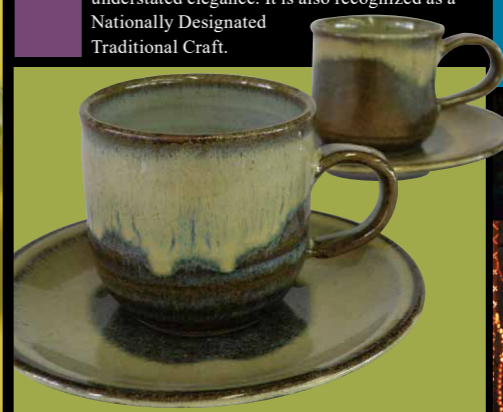
### Higo Temari 肥後てまり

This game, initially embraced by the samurai's inner chamber attendants, spread to the women of Higo (former name of Kumamoto). The tradition of playing with Higo Temari gave rise to the famous folk song "Antagata Doko-sa".



### Shodaiyaki Pottery 小代焼

With over 400 years of history, this inlay work has been cherished for its simple charm and understated elegance. It is also recognized as a Nationally Designated Traditional Craft.



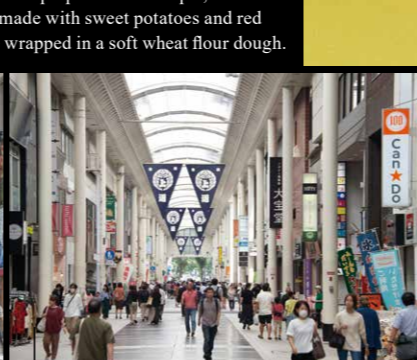
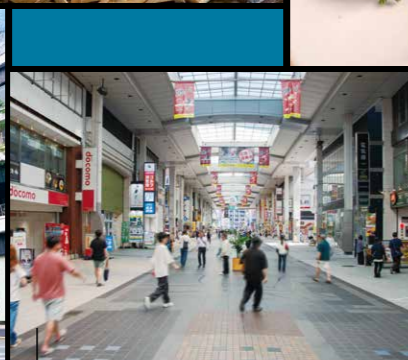
### What Are Nationally Designated Traditional Crafts?

These are crafts that are created using traditional techniques and have been used in everyday life for many years, officially recognized by the Japanese government. From Kumamoto, the following crafts have been designated: Higo Zogan, Shodai ware, Amakusa porcelain, and Yamaga lanterns.



### Mizuakari Lanterns みずあかり

The flickering light of candles set inside bamboo creates a mystical glow, illuminating Kumamoto Castle in late autumn. Featuring locally grown bamboo and traditional Japanese candles, the event won the 16th Hometown Event Grand Prize and the Minister of Internal Affairs and Communications Award.



### Fujisaki Hachimangu Autumn Festival 藤崎八幡宮秋季例大祭

This is one of Kumamoto's largest festivals, with over 1,070 years of history. Around 18,000 participants, accompanied by more than 60 decorated horses, parade through the city.



### SAKURA MACHI Kumamoto サクラマチ クマモト

The city center features a large multi-purpose complex, which includes the largest bus terminal in the country, as well as shopping facilities, public halls, hotels, and a cinema complex.

### Sun Road Shinshigai サンロード新市街

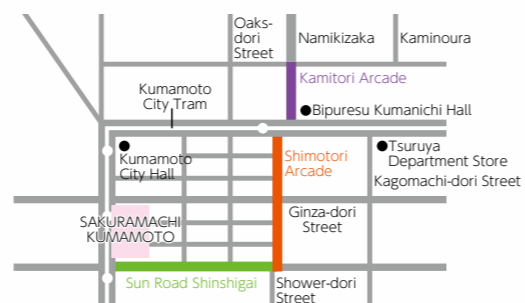
This arcade street, the only one with a cinema still standing, has been a commercial hub since the Meiji era. Located near the bus terminal, it offers excellent convenience as the city's transportation center.

### Shimotori Arcade 下通り

One of the largest commercial districts in western Japan, this is the busiest shopping area in the prefecture, bustling with shoppers throughout the day. The arcade street is lined with unique street trees that provide a calming atmosphere for passersby.

### Kamitori Arcade 上通り

This unique fashion street blends old and new, featuring second-hand bookstores once frequented by Natsume Soseki, alongside long-established shops that have been around since the Edo period.



# 街

## Streets

Kumamoto is home to a variety of vibrant streets, including arcade street, each offering its unique charm.



### Hinokuni Festival 火の国まつり

Since 1978, this has been a cherished summer tradition for the people of Kumamoto. To the upbeat rhythm of the samba version of the folk song "Otemoyan", participating groups dance through the heart of the city.

## Festivals

"Stillness" and "Motion" The spirit of *Higo Mokkosu* brings the seasons to life in the heart of Kumamoto.

# 祭

※Higo Mokkosu represents the masculine qualities of strength, principle, and unwavering resolve — traits that reflect a person's firm, uncompromising nature.

Enjoy the sauna. "Relax both your

mind and body in Kumamoto."

## The Sauna Sanctuary of the West

Relax both your mind and body in the historical sauna experience of the West.



PARTY!



サウナと天然温泉 湯けむり天国

湯らっくす

**Yulax**  
722 Honjo-machi, Chuo-ku,  
Kumamoto City 860-0816  
TEL. 096-362-1126

The bathhouse is located in the central area of Kumamoto.

Known as the sauna sanctuary of the West, it offers a variety of saunas.

The Meditation Sauna, with its dark room and a beam of light on the stove, allows for self-infusing.

The Salt Sauna, filled with steam that evokes the eruption of Mount Aso, is another option.

The Main Sauna features hourly sauna infusions (löyly), where towels are used to stir the steam,

spreading heat and aromas. After the sauna, head to the 171 cm deep cold plunge bath.

Press a button, and Aso's underground water pours down from above.

Afterward, sit in the provided sauna chairs, enjoy the fresh air, and experience complete relaxation.

**A rare, entertainment-style large sauna in Japan.**

### Sauna Theater THIS IS IT

Enjoy an immersive atmosphere with theater-like lighting and sound.

The Sauna Theater hosts daily events, including relaxation-focused programs and aufguss sessions, where towels are used dynamically to distribute steam, offering a fully sensory experience.



### Yadox (private rooms)

Opening in May 2024, Yadox offers a new experience where you can enjoy the sauna and meals at the main building, then unwind in a private room. Prices start from ¥7,700 per night (tax included). Check-in is at 15:00, and check-out is by 11:00 the next day.

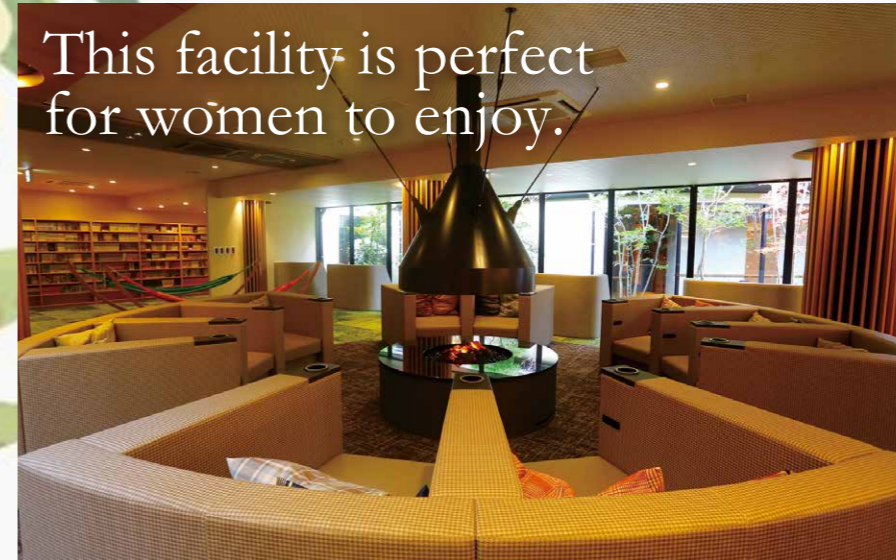
Reservations are available on the Yadox website.



Bijin no Yu

## Onsen Café Agannasse

This facility is perfect for women to enjoy.

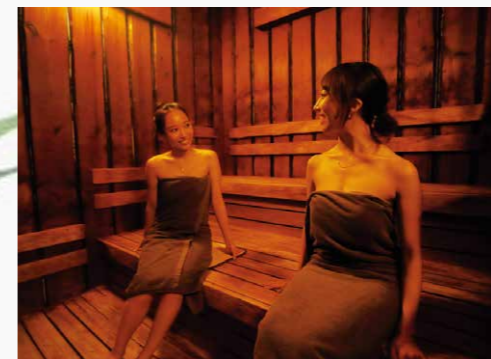


3-10-1 Tsuruhada-machi, Kita-ku,  
Kumamoto City 861-5517  
TEL. 096-344-1126  
Next to Kikunan Onsen UBL Hotel



### Enjoy the Comforting Heat of the Löyly Sauna

The sauna at Agannasse features the traditional Finnish Löyly sauna, where "Löyly" means "gentle heat that slowly descends." By pouring aromatic water over heated sauna stones, the steam produced contains negative ions, which encourage sweating. This sauna offers a humid, subtropical-like ambiance, providing effective sweat induction, fatigue recovery, and aromatherapy benefits. It is a sauna where you can relax and perspire gracefully, rather than enduring discomfort.



### Barrel Sauna

At totonou, enjoy the comfort of a private barrel sauna (4.0 meters long) equipped with an electric stove for self-infusing. With exclusive use, you can take your time and indulge in the smooth, soothing steam that only a barrel sauna can offer. Afterward, relax in the private cold plunge pool and unwind in the outdoor infinity chair for the ultimate relaxation. The barrel sauna is available for up to four people for a 90-minute private session.



### Korean-Style Low-Temperature Sauna Jjimjilbang

"Jjimjilbang" is a collective term for Korean-style low-temperature sauna. By heating the central "cauldron" (Purukama) in the room, the temperature rises to provide similar benefits to a traditional sauna.

The far-infrared rays and negative ions emitted from the heated cauldron warm the body deeply, allowing even those who are sensitive to high heat to enjoy a comfortable sweat. Come experience this new style of sauna and relaxation in Kumamoto!

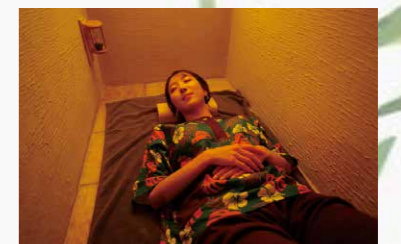


### Rock Bath (Ganban-yoku)

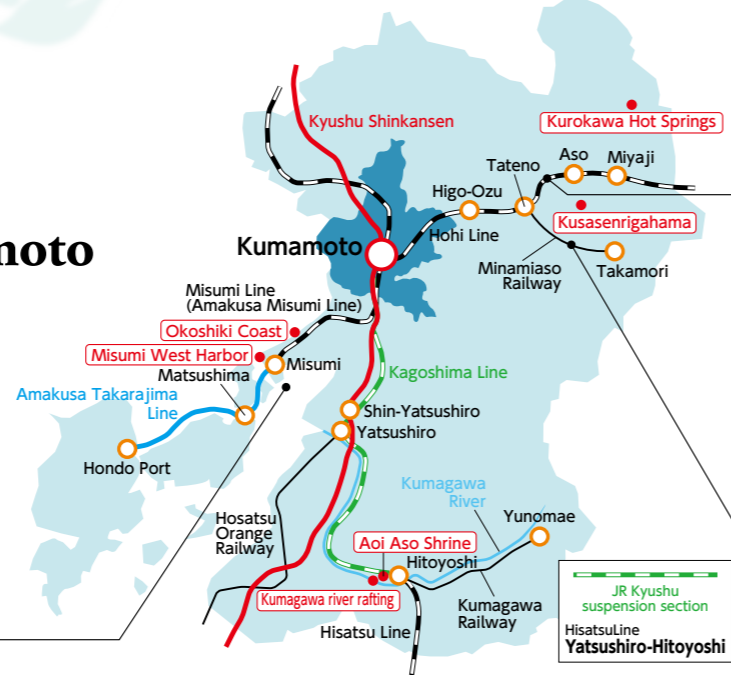
There are individual rock bath spaces made from various types of marble.

At the back of the jjimjilbang, you will find "Himalayan Salt Chairs," where you can relax and enjoy a rock bath. Himalayan salt, known for its rich mineral content and antioxidant properties, is said to help remove free radicals and prevent skin issues like wrinkles, sagging, and blemishes.

A women-only loft area is also available.



# Another attraction of Kumamoto is its unique tourist train journeys.



## Take the Limited Express "A-Train"

[Route] Kumamoto to Misumi [Travel time] About 40 minutes  
 ※ Inquire for details on operations

The "A-Train," named after the famous jazz classic, boasts a refined interior inspired by the "Nanban culture of the 16th-century Amakusa." With its warm wood tones and stained glass, the design evokes the feel of a movie scene. The train also features a bar counter, adding to the "grown-up" travel experience.

Enjoy a sophisticated adult getaway, evoking the charm of days gone by, while taking in the stunning views of Okoshiki Beach.



When in Amakusa, don't miss out on the fresh seafood! Savor the abundant offerings from the rich sea.



※ The photo is for illustrative purposes only.

### Okoshiki Coast 神興海岸



At low tide, a vast stretch of sand patterns emerges, extending for about 5 kilometers. This scenic spot, chosen as one of Japan's 100 Best Sunset Views, is a favorite among photographers from across the country.

### Misumi West Harbor 三角西港



The area is also home to a port built in the Meiji era and, along with the Manda Coal Mine in Arao, is recognized as a UNESCO World Heritage site. It also features the "Ryokan Urashimaya," which served as the setting for works by Lafcadio Hearn.

## Set Sail for the Amakusa Islands from Misumi on the Amakusa Takarajima Line

Connecting Misumi, Matsushima, and Hondo, the Amakusa Takarajima Line offers smooth access to Amakusa's sights. With a connection to the "A-Train" limited express service, your journey to the beautiful islands of Amakusa continues seamlessly.

Amakusa: A Haven of Greenery and Stunning Islands



## Limited Express "Asoboy"

[Route] Kumamoto to Aso/Miyaji  
 [Travel time] About 1h 35 mins

Experience the stunning islands of Amakusa and its lush greenery aboard the Amakusa Takarajima Line ferry, departing from Misumi. The Asoboy limited express features panoramic windows at both ends of the car, offering breathtaking views of the expansive Aso caldera. With the adorable mascot dog 'Kuro-chan' decorating the train, this amusing train ride will leave you wanting to return for a family adventure.

Journey to the Aso Caldera, a Magnificent Natural Landmark



Savor the delicious mountain produce, made possible by the fertile lands and abundant waters of Aso.



※ The photo is for illustrative purposes only.

### Kusasenri 草千里



Located at the northern foot of Eboshidake, one of Aso's five peaks, this vast grassland stretches across the volcanic crater. The picturesque landscape, with Nakadake's smoking crater as its backdrop, is truly captivating.

### Kurokawa Hot Springs 黒川温泉



Kurokawa Onsen, a popular hot spring destination that consistently ranks among Japan's best, offers a bath pass that lets you enjoy a variety of different baths, perfect for soothing your travel-worn body.

## Yusuge and Sunny Trolley Trains

[Route] Takamori to Tateno [Travel time] About 55 minutes  
 ※ Inquire for operation details.

The Minami Aso Railway has fully reopened after a seven-year hiatus, thanks to the generous support of many. Dedicated conductors provide informative guidance throughout the journey. On clear days, passengers can open the windows to enjoy fresh mountain air and scenic views of the Tateno Gorge.

The Minami Aso Railway, which recovered from the Kumamoto Earthquake, now runs through the stunning Nango Valley, bringing smiles along the way.

Yamamura Shuzo is a sake brewery that makes Aso sake using the groundwater from the Aso outer rim mountains and rice grown in Aso, all crafted by the hands of the local people.



### Yusui Tunnel 湧水トンネル



This park was developed on the site where construction of the former Takamori and Takachiho railway lines was halted due to groundwater issues. It now serves as a vital water source for the town of Takamori.

### Cafe Kueiya (Choyo Station) 久永屋



This café, located inside Choyo Station on the Minami Aso Railway, serves rustic chiffon cakes made with domestically sourced, unbleached wheat flour ground with a stone mill and 100% sugarcane raw sugar.

# Unique Venue

## What is a Unique Venue?

A Unique Venue is a special location that offers a distinctive setting for events like meetings and receptions. These venues include places such as museums, art galleries, historical buildings, shrines, temples, castles, and outdoor spaces like gardens, parks, shopping streets, and public roads. These unique venues help create a memorable atmosphere and highlight the local charm, and they are an important part of attracting MICE (Meetings, Incentives, Conferences, and Exhibitions) events. Kumamoto Prefecture is actively working to develop and promote such venues.

### ◆ Kumamoto Castle

Kumamoto Castle, one of Japan's three most famous castles, was built by Kato Kiyomasa over seven years starting in 1601. Renowned for its impressive history and architectural beauty, it is also famously known as Japan's most impregnable castle.

Despite the extensive damage caused by the 2016 Kumamoto Earthquake, the castle remains a symbol of the city and continues to move forward with its restoration steadily.

Hosting a reception in this extraordinary setting offers guests an unforgettable experience, making Kumamoto Castle a top-tier "unique venue" filled with lasting memories and satisfaction.



#### 【Unique Venue Overview】

##### Event Locations :

- Inside the Main Keep (Top floor of the Main Keep) (67m)
- Front Plaza of the Main Keep (2,000m)
- Heizaemon Maru (1,000m)
- Special Viewing Gallery (900m)
- Ninomaru Green (19,000m)

##### Capacity :

- Inside the Main Keep (Top floor of the Main Keep)
  - 10 people (Standing: 10, Seated: 8)
- Front Plaza of the Main Keep
  - 200 people (Standing: 200, Seated: 150)
- Heizaemon Maru
  - 100 people (Standing: 100, Seated: 80)
- Special Viewing Gallery
  - 200 people (Standing: 200)
- Ninomaru Green
  - Please inquire for details.

**Pricing Estimate :** Please inquire for details.

**Available Hours :** 6:00 - 8:30 and 17:30 - 21:00

※Ninomaru Green is available from 8:00 - 21:00 only.

**Location :** 1-1 Honmaru, Chuo-Ku, Kumamoto City

##### Note :

Various performances and attractions can be arranged based on your requirements. Please inquire for more information.

Inquiries : Kumamoto International Tourism and Convention Association  
(Public Interest Incorporated Foundation)  
TEL 096-359-1788 E-mail: mice@kumamoto-icb.or.jp

### ◆ Sakuranobaba Josaien

Sakuranobaba Josaien opened in March 2011 as a tourism facility that highlights the history and culture of Kumamoto while promoting local products. Located near the city center and at the foot of Kumamoto Castle, it is a great place to experience the region's charm. For social events, guests can enjoy Kumamoto's regional specialties and traditional cuisine. The central waterside area can also be used for main events and performances.

#### 【Facility Information】

**Area :** 5,473m<sup>2</sup>

**Capacity :** 500 people (500 standing, 100 seated)

**Available Hours :** From 19:00 to 21:00 only

**Pricing :** For 300 participants, the cost is ¥13,000 per person (excluding tax)

**Location :** 1-1 Ninomaru, Chuo-Ku, Kumamoto City

**Official website :** <https://www.sakuranobaba-josaien.jp>

**Notes :** Various attractions can be arranged based on your requirements (please inquire)

Inquiries : Kumamoto International Tourism and Convention Association  
(Public Interest Incorporated Foundation)  
TEL 096-359-1788 E-mail: mice@kumamoto-icb.or.jp



### ◆ Suizenji Jojuen

The first lord of the Higo Hosokawa clan, Tadatoshi, was so impressed by the abundant spring water in this area that he had a tea house built here. Later, under his son Tsunatoshi, the garden was expanded into a beautiful strolling garden. Using the rich spring water from Aso, the garden was designed to resemble the 53 stations of the Tokaido. Visitors can enjoy outdoor gatherings while taking in the stunning views that change with each season.

Inquiries : Kumamoto International Tourism and Convention Association  
(Public Interest Incorporated Foundation)  
TEL 096-359-1788 E-mail: mice@kumamoto-icb.or.jp

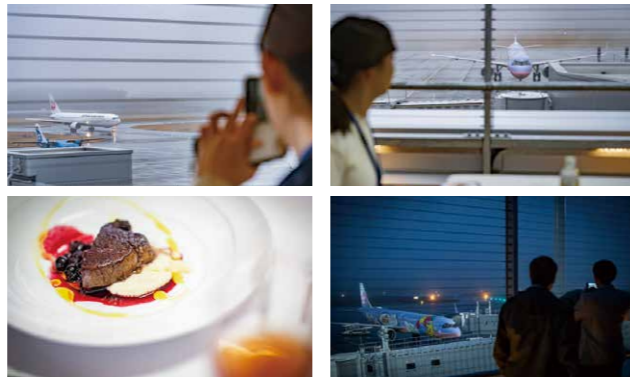


## ◆Aso Kumamoto Airport

As the air gateway to Kumamoto, Aso Kumamoto Airport offers a one-of-a-kind venue on its observation deck. Here, visitors can enjoy an unforgettable experience surrounded by the sights and sounds of aircraft. With the breathtaking landscape of Mount Aso as a backdrop, even the roar of jet engines becomes part of the atmosphere. It is a unique setting rarely found anywhere else in Japan.

**Capacity :** 40 - 60 (standing: 60, seated: 40)  
**Available Hours :** Inquire for details

Inquiries : Kumamoto International Tourism and Convention Association  
(Public Interest Incorporated Foundation)  
TEL 096-359-1788 E-mail : mice@kumamoto-icb.or.jp



## ◆Mifune Machinaka Gallery

Located about 40 minutes from central Kumamoto, Mifune is internationally known as the site where Japan's first carnivorous dinosaur fossil was discovered.

At the heart of this historic town stands the Mifune Machinaka Gallery, which also served briefly as the "Two-Day Prefectural Office" during the Satsuma Rebellion. Hosting a reception in the South Storehouse will offer guests a unique opportunity to experience a space rich in local history.

**Capacity :** 50 - 80 (standing: 80, seated: 50)  
**Available Hours :** Inquire for details

Inquiries : Kumamoto International Tourism and Convention Association  
(Public Interest Incorporated Foundation)  
TEL 096-359-1788 E-mail : mice@kumamoto-icb.or.jp



## ◆Misumi Port Ferry Terminal (Sea Pyramid)

The Misumi Port Ferry Terminal (Sea Pyramid) was designed as part of the "Kumamoto Artpolis" initiative. Kumamoto Artpolis seeks to raise awareness of environmental design, enhance urban and architectural culture, and establish Kumamoto as a cultural hub by creating lasting cultural assets for future generations. As a symbol of the historic Misumi Port, the terminal's distinctive design and tranquil interior provide a unique, extraordinary ambience.

**Capacity :** 20 - 30 (standing: 30, seated: 20)  
**Available Hours :** Inquire for details

Inquiries : Kumamoto International Tourism and Convention Association  
(Public Interest Incorporated Foundation)  
TEL 096-359-1788 E-mail : mice@kumamoto-icb.or.jp



## ◆Kumamoto Ferry Co., Ltd. Ocean Arrow

Enjoy a night cruise on the Ariake Sea, nestled between the Aso and Unzen Global Geoparks. You will be sailing on the Ocean Arrow, one of Japan's leading high-speed car ferries with a world-class track record. Built by JMU in Kumamoto, home to a massive 1-million-ton dry dock, the vessel features two cabin floors and an open deck, offering a range of spaces to make your cruise a truly memorable experience.

**Capacity :** 100  
**Available Hours :** Weekdays only, from 19:30 to 21:30  
(Inquire for details)

Inquiries : Kumamoto Ferry  
TEL 096-311-4330



# Excursion

## What is an Excursion?

An excursion is a guided, hands-on tour—often by bus, train, or boat—designed to deepen your understanding of a destination. With expert commentary on the local nature, history, culture, and industry, not only will you listen and learn but also experience firsthand. It is an immersive journey that brings each place to life.

## ◆Tracing the Legacy of Miyamoto Musashi in Kumamoto

Renowned worldwide as an unrivaled swordsman from the late Sengoku to the early Edo period, Miyamoto Musashi is a name known to almost all. Yet, few realize that he spent his final years in Kumamoto.

This guided tour visits key sites tied to Musashi's life in Kumamoto, including Musashizuka and Reigando Cave. The journey concludes at the Shimada Museum of Art, where you will view rare artifacts and enjoy a special dessert and drink set, available only to tour participants, at the museum's tucked-away café.

As a highlight, you will witness a private demonstration of Niten Ichi-ryu, the sword style founded by Musashi, held inside the museum—a rare and exclusive experience.

Inquiries : Kumamoto International Tourism and Convention Association  
(Public Interest Incorporated Foundation)  
TEL 096-359-1788 E-mail : mice@kumamoto-icb.or.jp

### 【Tour Details】

**Group Size :** Up to 20 participants

**Meals :** Includes lunch

**Meeting Locations :**

JR Kumamoto Station, Sakuramachi Bus Terminal, or other designated spots

**Notes :**

- This is a made-to-order tour. After booking, we will work with you to finalize the itinerary.  
(This is not a regularly scheduled tour or one available for sign-up.)
- The itinerary may change in case of poor weather or if certain facilities are unavailable.
- Destinations can be customized. Feel free to inquire for details.

### ○Sample Itinerary

Dep. Kumamoto Station - 9:00

- ① Musashizuka Park
- ② Sakuranobaba Josaien (Lunch)
- ③ Reigandou
- ④ Shimada Museum

Ret. Kumamoto Station - 16:30



## ◆ Exploring the Higo Hosokawa Legacy in Kumamoto

Inquiries : Kumamoto International Tourism and Convention Association  
(Public Interest Incorporated Foundation)  
TEL 096-359-1788 E-mail:mice@kumamoto-icb.or.jp

Kumamoto was once governed by two major families: the Kato family, renowned for Kato Kiyomasa's skill in castle building, and later the Hosokawa family. After the Kato line ended, Hosokawa Tadatoshi came from the Kokura Domain in Buzen Province to assume his position as the new lord. This tour introduces key locations in Kumamoto associated with the Hosokawa family.



### [Sample Itinerary]

Dep. Kumamoto Sakuramachi Bus Terminal - 9:00

- ① Kitaoka Nature Park
- ② Suizenji Jojuen
- ③ Lunch at Yusuitei
- ④ Lunch
- ⑤ Tatsuda Nature Park  
(Tea ceremony experience at Koshoken)

※ This is a made-to-order tour

## ◆ A Journey Through the History of Kawashiri

Inquiries : Kumamoto International Tourism and Convention Association  
(Public Interest Incorporated Foundation)  
TEL 096-359-1788 E-mail:mice@kumamoto-icb.or.jp

Once a thriving port town engaged in overseas trade during the Kamakura period, Kawashiri is rich in history. On this tour, you will stroll through the old streets with a local guide, try your hand at making traditional wagashi, enjoy hands-on experiences at the Kumamoto Traditional Crafts Center, visit historic temples, and trace the legacy of judo legend Masahiko Kimura—one of Kawashiri's most iconic figures. It is a tour packed with the unique heritage and charm of Kawashiri.



### [Sample Itinerary]

Dep. Kumamoto Sakuramachi Bus Terminal - 9:00

- ① Discover Kawashiri on a guided walking tour
- ② Enjoy a special lunch at Iwamura  
~ Choose Your Afternoon Plan ~
- A Traditional wagashi making and cultural craft experience
- B Temple walk & unique encounters
- C Tracing the legacy of Masahiko Kimura

※ This is a made-to-order tour

## ◆ Step into the Living Traditions of Yamaga

Inquiries : Kumamoto International Tourism and Convention Association  
(Public Interest Incorporated Foundation)  
TEL 096-359-1788 E-mail:mice@kumamoto-icb.or.jp

Yamaga is known for its hot springs and the Yamaga Lantern Festival. It is also home to the historic Yachiyoza Theater, a nationally designated Important Cultural Property, giving the town a rich cultural atmosphere.

This tour offers a form of heritage tourism, where you will learn about Yamaga's traditional culture through hands-on activities and insights from a working Yamaga lantern artisan.



### [Sample Itinerary]

Dep. Kumamoto Sakuramachi Bus Terminal - 8:45

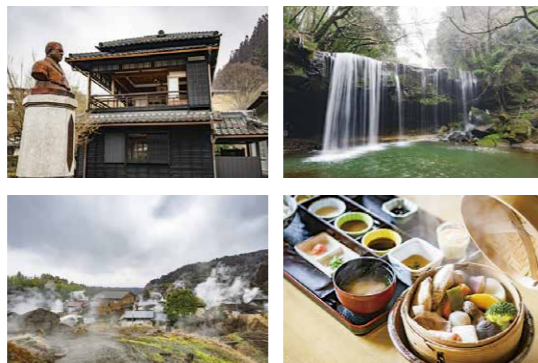
- ① Yamaga Lantern Museum
- ② Yamanote  
(Discover Local Craftsmanship)
- ③ Washi lamp making
- ④ Yachiyoza (Lunch)
- ⑤ Kurikawa Shop  
(Kutami Shibu Uchiwa : Paper Fan)

※ This is a made-to-order tour

## ◆ Discover Oguni's Path to Sustainability

Inquiries : Kumamoto International Tourism and Convention Association  
(Public Interest Incorporated Foundation)  
TEL 096-359-1788 E-mail:mice@kumamoto-icb.or.jp

Tucked at the foot of Mt. Waita, Waita Onsen in Oguni is known for its natural hot springs and rising geothermal steam. This tour takes you to sustainable highlights such as Nabegataki Falls and the Shibasaburo Kitazato Museum, dedicated to one of Oguni's most celebrated figures. You'll also get to enjoy geothermal-brewed coffee and take part in a hands-on craft activity using reclaimed wood from local forests. It's a journey through Oguni that showcases how tradition and sustainability go hand in hand.



### [Sample Itinerary]

Dep. Kumamoto Sakuramachi Bus Terminal - 8:30

- ① Nabegataki Waterfall
- ② Kitazato Shibasaburo Memorial Museum
- ③ Geothermal steamed lunch
- ④ Geothermal brewed coffee  
(with commentaries)
- ⑤ Make something useful with reclaimed Japanese cypress

※ This is a made-to-order tour

## ◆ Where Water Runs Deep – Exploring Kumamoto's Aquatic Heritage

Inquiries : Kumamoto International Tourism and Convention Association  
(Public Interest Incorporated Foundation)  
TEL 096-359-1788 E-mail:mice@kumamoto-icb.or.jp

Home to the vast Aso Caldera—one of the largest in the world—Kumamoto is rich in natural water resources. From bubbling springs and clear rivers to tranquil lakes, the region boasts a rare and abundant aquatic environment that has shaped a unique local culture. This tour begins at the source: the headwaters of the River Shirakawa, which flows through central Kumamoto. You will then visit Yamamura Sake Brewery, which uses Aso's pure spring water to produce its sake.

For lunch, enjoy a hands-on soba-making experience using Aso's spring water while taking in stunning views of the surrounding landscape, followed by the chance to taste your freshly made noodles. The tour concludes with a visit to the HICOM Water Factory in Minamiaso, where you will observe how non-heat-treated natural mineral water is produced. You will also take part in a water tasting session, comparing the distinct flavors of different local spring waters.

### [Tour Details]

**Group Size :** Up to 20 participants **Meals :** Includes lunch

**Meeting Locations :**

JR Kumamoto Station, Sakuramachi Bus Terminal, or other designated spots

**Notes :**

- This is a made-to-order tour. We'll finalize the itinerary together after your booking.  
(This is not a regularly scheduled or publicly available group tour.)
- The itinerary may change due to poor weather or if certain facilities are unavailable.
- Tour stops can be customized. Feel free to inquire for more details.

○ **Sample Itinerary**

Dep. Kumamoto Station - 9:00

- ① Shirakawa Springs
- ② Yamamura Sake Brewery
- ③ Minamiaso Soba Dojo
- ④ Asobonosato Kugino Roadside Station (shopping)
- ⑤ HICOM Water Minamiaso Village Factory

Ret. Kumamoto Station - 16:45



# Technical Visit

## What is a Technical Visit?

A technical visit is a study-focused tour designed to explore advanced technologies and specialized fields in depth. Unlike typical sightseeing trips, it involves visiting relevant sites and facilities to gain firsthand insights into a specific area of expertise. We offer tailored technical visits that showcase innovations and industries unique to Kumamoto.

### Saishunkan Pharmaceutical Co., Ltd.

Saishunkan Pharmaceutical Co., Ltd. is known for its flagship skincare brand Domohorn Wrinkle and produces a range of cosmetics and pharmaceuticals. On this tour, you will get a behind-the-scenes look at the production of some of Japan's leading skincare products, with access to one of the country's top-level manufacturing facilities. You will also have the option to enjoy a sustainability-themed lunch (available for an additional fee), inspired by the company's commitment to the SDGs.



### HICOM Water Co., Ltd. Minamiaso Village Factory

HICOM Water Co., Ltd. bottles fresh spring water drawn from 100 meters underground at its Minamiaso Village facility, filling each bottle without heat treatment to preserve its natural purity. This tour gives you a behind-the-scenes look at how Premium Water, a 100% natural mineral water sourced from the Aso region, is produced.



### Kyushu Shinkansen Kumamoto General Rolling Stock Depot

The Kumamoto General Rolling Stock Depot is the third major Shinkansen maintenance facility in Japan. It handles everything from routine inspections to full-scale overhauls, including truck maintenance, similar to a car's MOT.

Home to the JR Kyushu 800 Series and the jointly developed N700 Series with JR West, the depot offers a rare opportunity to see some of the world's leading rail technology up close.



## Venue Setup & Signage

Company / Organization	Telephone Number
Adroom, Inc.	TEL: 096-369-8494
Kumanichokohkusha inc.	TEL: 096-366-1131
JUNK PLANNING Co.,LTD.	TEL: 096-381-6001
RKK Media Planning	TEL: 096-351-3811
TEAM	TEL: 096-237-6763
TSUKASA SOUKEN Co., LTD.	TEL: 096-235-2351
FUTABA KYUSYU	TEL: 096-324-3131
Meitetsu World Travel,Inc.	TEL: 096-354-4351

## Printing

Company / Organization	Telephone Number
RKK Media Planning	TEL: 096-351-3811
BRIDGE KUMAMOTO	TEL: 096-273-6425
Kumanichokohkusha inc.	TEL: 096-366-1131
Meitetsu World Travel,Inc.	TEL: 096-354-4351
CAP Co., Ltd.	TEL: 096-362-3333
CRANE DESIGN OFFICE	TEL: 090-4518-3161
KINKOSHA	TEL: 03-3294-3101
KEIBUNSHA	TEL: 096-368-8100
JONO PRINT Co., Ltd.	TEL: 096-286-3366
MIND	TEL: 096-324-7600
Ace Publishing Co., Ltd.	TEL: 096-339-8555
COLORS PLANNING	TEL: 096-213-1505
Kumamoto Living Shinbunsha	TEL: 096-359-3311
Koei Printing	TEL: 096-389-5570
ZENRIN CO., LTD.	TEL: 096-370-1400
CHUIN Inc.	TEL: 096-354-4192
BUD presto	TEL: 096-312-7720
Planning-kobo komaki	TEL: 096-237-7733
Liebam Co., Ltd.	TEL: 03-5337-3088
KAMOME Corp.	TEL: 096-279-3440

## Travel & Hotel Booking

Company / Organization	Telephone Number
TEAM	TEL: 096-237-6763
NISHITETSU TRAVEL CO.,LTD.	TEL: 096-383-2700
NIPPON TRAVEL AGENCY Co.,LTD.	TEL: 096-354-4488
Kyushu Sanko Tourism Co.,Ltd.	TEL: 096-325-8240
KNT Co.,Ltd.	TEL: 096-325-4831
H.I.S. Co., Ltd.	TEL: 092-735-5570
JTB Corp.	TEL: 096-322-4115
TOBU TOP TOURS CO., LTD.	TEL: 096-354-5765

Nissenren Tours	TEL: 096-326-1611
Meitetsu World Travel,Inc.	TEL: 096-354-4351

## Website Development

Company / Organization	Telephone Number
RKK Media Planning	TEL: 096-351-3811
BRIDGE KUMAMOTO	TEL: 096-273-6425
studio layer	TEL: 096-370-7133
Kumanichokohkusha inc.	TEL: 096-366-1131
Meitetsu World Travel,Inc.	TEL: 096-354-4351
WEBYA-TASHIRO	TEL: 090-3662-1914
ON-do	TEL: 090-2222-7617
Thinkgarbage, Inc.	TEL: 096-288-3353
JWPP	TEL: 096-321-8047

## Event Operations Support

Company / Organization	Telephone Number
Congrès Inc.	TEL: 092-716-7116
Convention Support Kyushu Co.,Ltd	TEL: 096-373-9188
RKK Media Planning	TEL: 096-351-3811
TEAM	TEL: 096-237-6763
Adroom, Inc.	TEL: 096-369-8494
KYODO FACTORY INC.	TEL: 096-324-2020
CONVENTION LINKAGE, INC.	TEL: 096-288-0882
Zenith japan co.,ltd.	TEL: 092-722-2811
Inter Group Corp.	TEL: 092-712-9530
JAPAN CONVENTION SERVICES, INC.	TEL: 092-712-6201
Kumanichokohkusha inc.	TEL: 096-366-1131
Meitetsu World Travel,Inc.	TEL: 096-354-4351

## Chartered Buses

Company / Organization	Telephone Number
Sanko Bus	TEL: 096-325-0557
Kumamoto Bus Co.,Ltd.	TEL: 096-370-8181
Kumamotodentetsu Co.,Ltd.	TEL: 096-343-2526
NISHITETSU TRAVEL CO.,LTD.	TEL: 096-383-2700
Meitetsu World Travel,Inc.	TEL: 096-354-4351

## Taxis

Company / Organization	Telephone Number
Kumamoto Prefecture Taxi Association	TEL: 096-368-4101
Kumamoto City Taxi Association	TEL: 096-365-6633
Nizumitaxi	TEL: 096-365-0611
KUMAMOTO KOTSU Co.,Ltd.	TEL: 096-369-9837
Kumamoto Private Taxi Cooperative	TEL: 096-389-4186
KUMAMOTO Chartered Cab.	TEL: 096-379-8182

DAIICHI KOUTSU SANGYO Co.,Ltd.	TEL: 096-354-2765
--------------------------------	-------------------

## Car Rental

Company / Organization	Telephone Number
Kumamoto Prefecture Car Rental Association	TEL: 096-367-3675
Toyota Rent a Lease Kumamoto	TEL: 096-388-7171
NISHITETSU TRAVEL CO.,LTD.	TEL: 096-383-2700
Meitetsu World Travel,Inc.	TEL: 096-354-4351

## Staffing

Company / Organization	Telephone Number
KYODO FACTORY INC.	TEL: 096-324-2020
RKK Media Planning	TEL: 096-351-3811
Timee, Inc.	TEL: 080-7303-1086
Meitetsu World Travel,Inc.	TEL: 096-354-4351
SOGO PLANT Inc.	TEL: 096-385-9888

## Catering

Company / Organization	Telephone Number
Kumamoto Prefecture Kitchen Car Association	TEL: 090-7443-9697
Kumamotojo Sakuranobaba Retail Co.,Ltd.	TEL: 096-288-5577
WATARU COFFEE ROASTER LABO	TEL: 096-200-6572
Deli Chef	TEL: 050-1754-2158
NISHITETSU TRAVEL CO.,LTD.	TEL: 096-383-2700
Japanese Restaurant Kaminomizu	TEL: 096-237-7507

## Packed Lunches

Company / Organization	Telephone Number
IKEDAYA	TEL: 096-346-8828
NAGOMIAN	TEL: 096-201-5753
HIRAI CO.,LTD.	TEL: 096-324-3666
Kumamoto Food Stall Village	TEL: 080-4974-2179
NISHITETSU TRAVEL CO.,LTD.	TEL: 096-383-2700
Meitetsu World Travel,Inc.	TEL: 096-354-4351
Japanese Restaurant Kaminomizu	TEL: 096-237-7507
Ichiraku-foods	TEL: 096-323-6066

## Local Specialties & Gifts

Company / Organization	Telephone Number
RKK Media Planning	TEL: 096-351-3811
KOURANTEI	TEL: 096-352-7194
Kirin Brewery Company, Limited	TEL: 096-359-0120
SUNTORY HOLDINGS LIMITED.	TEL: 096-359-7711
SEALUCK co.,ltd.	TEL: 06-4866-5086
YAHEX CO., LTD.	TEL: 052-501-0020
Kumamoto Prefectural Traditional Crafts Center	TEL: 096-324-4930
Kumamoto Prefectural Products Promotion Association	TEL: 096-353-1168

Kumamotojo Sakuranobaba Retail Co.,Ltd.	TEL: 096-288-5577
Kiyomasa Seika	TEL: 096-275-2300
Ueki Roadside Station Suika no Sato	TEL: 096-272-2333
CHOUJYUAN	TEL: 096-354-2278
Japanese Restaurant Kaminomizu	TEL: 096-237-7507
Mitsusuke Inc.	TEL: 096-324-4488
Okashi-no-kobai Corporation.	TEL: 096-362-9200
ikinariya-watanabe	TEL: 096-346-0247
Sonoya Inc.	TEL: 096-380-6175
HANAMARUDO	TEL: 096-288-3212
KIMURA CO.,Ltd.	TEL: 096-234-1110
Iwata Corporation	TEL: 096-245-5211
TSUHO	TEL: 096-370-0066
Okashi-Fukudaya.	TEL: 096-272-0234
FUJIBAMBI CO.,LTD.	TEL: 096-245-5350
Morikarashirenkon.	TEL: 096-351-0001
Fudo Chikuwa	TEL: 0964-28-2038
KAWAKAMI SAKE	TEL: 096-326-1568
Yamamura Shuzo & CO.	TEL: 0967-62-0001
FUSANOTSUYU Inc.	TEL: 0966-42-2008
Hananoka Shuzo Co., Ltd.	TEL: 0968-34-2055
TAKAHASHI SHUZO CO.LTD	TEL: 0966-42-2366
Takata Shuzojo Co.,Ltd.	TEL: 0966-45-0200
Sengetsu shuzo.	TEL: 0966-22-3207
Tsunematsu Shuzo Honten Inc.	TEL: 0966-42-2381
torigoe	TEL: 0966-22-2375
KUMAMOTO WINE FARM CO., LTD.	TEL: 096-275-2277
HAMADA SHOYU Co., Ltd.	TEL: 096-329-7111
HASHIMOTO SHOYU	TEL: 096-288-0811
FUTABA Co.,Ltd.	TEL: 096-356-3488
Dennsyu-no-yakata	TEL: 096-354-8649
RITA FOODS, Inc.	TEL: 096-342-4933
SENKO FARM CO., LTD.	TEL: 096-282-7677
ASO NATURAL . J FARM.	TEL: 0967-67-4186
Down Town Art Company	TEL: 096-354-1944
art channel	TEL: 096-242-7072

## Promotional Giveaways

Company / Organization	Telephone Number
RKK Media Planning	TEL: 096-351-3811
Adroom, Inc.	TEL: 096-369-8494
BRIDGE KUMAMOTO	TEL: 096-273-6425
YAHEX CO., LTD.	TEL: 052-501-0020



**Kumamoto International Convention  
and Tourism Bureau**

Senju Bldg. 5F, 4-30-1 Saikumachi, Chuo-Ku,  
Kumamoto City, Kumamoto Prefecture 860-0041  
TEL : 096-359-1788  
<https://kumamoto-icb.or.jp>  
E-mail: [mice@kumamoto-icb.or.jp](mailto:mice@kumamoto-icb.or.jp)



**Kumamoto City  
Strategic Promotion Department**

1-1 Tetori Honcho, Chuo-Ku,  
Kumamoto City, Kumamoto Prefecture 860-8601  
TEL : 096-328-2073  
<https://www.city.kumamoto.jp/>  
E-mail: [yuchisenryaku@city.kumamoto.lg.jp](mailto:yuchisenryaku@city.kumamoto.lg.jp)