



KUMAMOTO Gourmet

with coupons!

Gourmet Food of Kumamoto Local



Horse Meat



Horse meat is low in calorie and high in protein. Please enjoy horse meat with various ways such as sashimi and yakiniku.

Eat here.

4 12 13 14 15 16 17 18 21 22 23 24
25 26 27 28 29 30 32 33 34 35 36 37
38 39 40 41 42 44 45 47 48 49 50 51
52 54 55 56 57 58 59 60 61 62

Buy here.

9 15

Karashi Renkon



Lotus Root with Japanese Mustard

The dish is made by deep-frying lotus roots filled with mustard flavored miso. It makes a beautiful saké accompaniment.



Eat here.

12 13 14 15 16 17 23
24 25 26 28 29 30 32 33 34 35 36 37
42 44 45 48 49 50 51 52 55 56 57 60 61 71

Buy here.

5 15 16



Hitomoji no Guruguru

Boiled Hitomoji onion tightly wound up and served with miso seasoned with vinegar.



Eat here.

12 14 15 16 17 23 24 25 26
28 29 30 32 33 35 37 42 45
49 50 51 52 55 56 61

Aka Ushi Beef



Aka Ushi cows drink the pure Aso water and feed on the soft grass of the plains of Aso. Aka Ushi is tender, low in fat and healthy meat. Please try Aka Ushi Beef such as steak or barbecued.

Eat here.

10 13 15 18 19 20 21 22 25 26
27 28 29 31 32 35 37 38 42 44
49 55 59 61 62 63 71

Kumamoto Ramen



The ramen features a rich pork bone soup, straight and chewy, medium-thick noodles, and an abundance of fried garlic.

Eat here. 1 2 3 4 5 6 7 8 11

Buy here. 15



Taipien

Chinese style soup noodle of Kumamoto origin. It contains healthy glass noodles and vegetables.

Eat here.

9 10 11 26 29 48

Buy here. 15

Ikinari Dango



Sweet potato and bean paste dumpling of Kumamoto origin. "Ikinari" means sudden. It comes from we can make it quickly even if a guest suddenly visits.

Buy here. 1 8 12 15



Amakusa Daioh

Amakusa Free Range Chicken.

It is also known as the phantom chicken. The meat is characterized by its firmness, bounce, and juiciness.

Eat here.

16 25 26 28 30 35 37 42 47 50 51 56 59



1 KOMURASAKI



こむらさき 上通中央店

The garlic chips, roasted uniquely to intensify their flavor, and tonkotsu (pork bone) broth without excess oil, marry well with the smooth, medium-fine noodles. Please enjoy the taste of Kumamoto, which has been unchanged since the restaurant began in 1954.

Recommended dishes

Osama Ramen 800 yen
Special Char Siu Men 1,200 yen
Natto Ramen 750 yen

MAP③ F-1

8-16, Kamitori-cho, Chuo-ku, Kumamoto City
TEL: 096-325-8972
Hours: 11:00-16:00 (LO 15:30)
18:00-22:00 (LO 21:30)
Capacity: 40 (private rooms available)
No parking.
Closed at the end of the year and New Year holidays.



2 RAMEN AKAGUMI ラーメン赤組



For 550 yen, you can enjoy Kumamoto Ramen with flavor roasted garlic oil at this establishment!

Recommended dishes

Kumamoto Ramen 580 yen
Yokubari Ramen 880 yen
Stewed Offal 480 yen

MAP③ G-1

7-29, Kamitori-cho, Chuo-ku, Kumamoto City
TEL: 096-325-8766
Hours: 11:00-23:30 (LO23:00)
Subject to change.
Capacity: 25
No parking
Open all year round



3 Kumamoto Tonkotsu DEN 伝統熊本豚骨伝



Ajisen Ramen's new brand. Picture is the Kun Ramen with the tantalizing aromatic and mildly bitter dark roasted garlic oil!

Recommended dishes

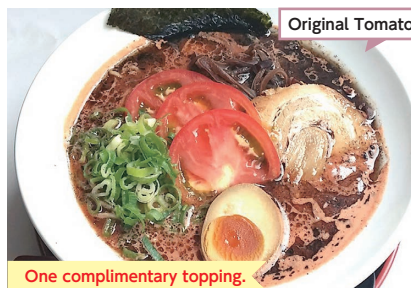
Den DX 1,200 yen
Den Ramen (Kumamoto Ramen) 800 yen
Kun Ramen 850 yen

MAP③ E-4

13-4, Hanabata-cho, Chuo-ku, Kumamoto City
TEL: 096-354-9822
Hours:
[Mon-Sat] 11:30-3:00 (LO 2:30)
[Sun & public holidays] 11:30-1:00 (LO 0:30)
Capacity: 16 No parking
Closed on New Year's day.



4 KOKURYUKO 黒龍紅



Original Tomato Ramen

Kumamoto Tonkotsu Ramen is well-loved by local customers. This restaurant also offers many original dishes, including tomato ramen and handmade gyoza sticks.

Recommended dishes

Char Siu Ramen 1,100 yen
Hand-prepped gyoza sticks 450 yen
Assortment of horse meat sashimi 2,200 yen

MAP① C-4
11:00-14:00

2-5-7, Kasuga, Nishi-ku, Kumamoto City
TEL: 096-353-0929
Hours: 11:00-14:00 (LO 13:30)
17:00-24:00 (LO 23:30)
Capacity: 25
Parking available
Closed on Sundays



Regional Cuisine Kumamoto Ramen

Benefits you will receive by presenting this booklet.

Wheelchair accessible Smoking seats available

5 Kumamoto Ramen KOKUTEI 熊本ラーメン専門店 黒亭本店

Established in 1957. The restaurant serves excellent ramen using a stock made with a pig's head only and house-made garlic oil.

2-1-23, Nihongi, Nishi-ku, Kumamoto City
TEL: 096-352-1648
Hours: 10:30-21:00 (LO 20:30)
Capacity: 25
Parking available.
Check the website for closing days.



Recommended dishes

Ramen with an egg 1,100 yen
Ramen 890 yen



6 OCEAN'S SEVEN 熊本市動植物園内レストハウス OCEAN'S SEVEN

Beef with rice features tender, premium-quality steak cut into pieces and served over rice. Besides, we also offer Kumamoto Ramen, With Rice Dishes, Kids Meal, Corn Dog and French Fries.

5-14-2, Kengun, Higashi-ku, Kumamoto City
TEL: 090-8221-6659
Hours: [Weekdays] 11:00-16:00 (LO15:45)
[Sat. Sun & holidays] 11:00-16:30 (LO16:15)
Seats 60 inside, 30 terrace seating
Parking available (Zoo & Botanical Gardens parking)
Closed when Zoo & Botanical Gardens are closed.



Recommended dishes

Beef with rice
Chicken with rice
Tonkotsu Ramen
*Please inquire to the restaurant about the price.



9 KOURANTEI Shimotori-honten 紅蘭亭 下通本店



The Kourantei's main restaurant on Shimotori Street reopened in the spring of 2020. Enjoy authentic Chinese cuisine prepared by our skilled chefs in a relaxing ambiance. Table seating, tatami rooms, and private rooms are available. We cater to all kinds of requirements, including parties.

Recommended dishes

Taiapien 1,080 yen
Sweet & Sour Pork 1,680 yen
Chilli Prawns 1,980 yen

MAP③ F-3
Perital

2-6F, 5-26, Ansei-machi, Chuo-ku, Kumamoto City Restaurant on the 2nd floor & party rooms on the 3rd to 6th floors
TEL: 096-352-7177 (Reservation)
Hours: 11:00-21:00(LO20:00)
Seats 90 (2nd floor main dining room)
No parking
Open all year round



10 Chinese cuisine ENEN 中華旬菜 燕燕



Enjoy lovingly prepared dishes made with seasonal ingredients, including Kumamoto's famous Taiapien and Sichuan-style Ma Po Tofu.

Recommended dishes

Ma La Tang En 1,200 yen
Sichuan-style Ma Po Tofu 1,200 yen
Akaushi beef in garlic sauce 2,000 yen

MAP② C-5

1F, Matsuzaki Building, 54-4, Renpei-cho, Chuo-ku, Kumamoto City
TEL: 096-353-3913
Hours: Lunch 11:30-14:00 (LO 13:30)
Closes when ingredients are used up
Dinner 18:00-21:30 (LO 21:00)
Capacity: 28 No parking
Closed Saturdays (evenings only), Sundays, holidays, and as required.
Irregular holidays



11 Chinese Restaurant MARUMI 中国料理 まるみ



One free dish of gyoza

The extensive menu includes Champon, Taiapien, Gyoza, Ramen, and fried rice besides authentic Chinese dishes.

Recommended dishes

Taiapien 913 yen
Champon 770 yen
Ramen 660 yen

440-2, Taramizu, Ueki-machi, Kita-ku, Kumamoto City
TEL: 096-272-4949
0120-540-063
Hours: 11:30-22:00 (LO 21:00)
Seats 100 (private & party rooms)
Parking available(Motorcoaches may park)
Closed on Mondays (Closed on Tuesday if Monday is a public holiday)



12 MONAKA・AGURA もなか・安坐 (個室)



Monaka offers a spacious dining area with an open plan kitchen, while Anza is a private dining room with an elegant ambiance. Please enjoy the seasonal delicacies made from the finest ingredients in these two settings, along with sake from various regions of Japan.

Recommended dishes

Prime Horse Shabu-Shabu 3,520 yen per person
Sumptuous Horse Sashimi Platter from 3,740 yen
Fried Mustard-Filled Lotus Root 803 yen

MAP③ G-4

2F, 1-6-12, Shimotori, Chuo-ku, Kumamoto City
TEL: 096-354-3488
Hours: 17:00-24:00
Capacity: 70
(private rooms available)
No parking
Irregular holidays



Regional Cuisine
Kumamoto Area
Taiapien
Horse Meat
Maple Leaf
Peking Duck
Korean BBQ
Horse no Kani
Horse Sashimi

Benefits you will receive by presenting this booklet.

Wheelchair accessible
Smoking seats available

13 Yuka MIRACLE 遊家 未ら来る

Enjoy a meal that meets your needs, whether dining with a small group or a large party. We offer a diverse range of dishes made with seasonal ingredients, including horse meat sashimi and regional cuisine.

Recommended dishes

Horse meat nigiri 1,280 yen
House-made mustard lotus root 680 yen
Horse meat sashimi platter 5,780 yen

5-15, Ansei-machi, Chuo-ku, Kumamoto City
TEL: 096-312-3799
Hours: 17:00-1:00
Capacity: 110
(private room available)
No parking
Irregular holidays



14 Local Cuisine KENZO 馬肉郷土料理 けんぞう

Enjoy a wide range of dishes such as steak, tempura, and offal hotpot, besides horse meat sashimi.

Recommended dishes

Horse meat sashimi 2,420 yen
5-cuts platter (liver, tongue, heart, aorta, and shoulder) 3,960 yen
Horse meat nigiri sushi 1,320 yen

Basement, Shichiko Building, 1-8-24, Shimo-tori, Chuo-ku, Kumamoto City
TEL: 096-356-8775
Hours: 17:00-22:30 (LO 22:00)
Capacity: 28
No parking
Irregular holidays



A complimentary small dish

15 BATAN GYUTAN 馬タン牛タン

We look forward to serving you Kumamoto's famous foods, including horse tongue, a rarity even in Kumamoto, horse donburi, and Akaushi beef.

Recommended dishes

Char-grilled horse and beef tongue, 4,389 yen
The house special horse meat bowl, 1,419 yen

Lion Building Matsufuji kan, 1-11-17, Shimo-tori, Chuo-ku, Kumamoto City
TEL: 080-3746-3779
Hours: 11:00-16:00 (LO 15:30)
17:00-24:00 (LO 23:00)
[Sun & public holidays]
11:00-23:00 (LO 22:00)
Capacity: 50 (private rooms available)
No parking Irregular holidays



Complimentary beef tongue tempura

16 KUMAMOTO HORMONE (Innards) 熊本ホルモン

Kumamoto's leading horumon (offal) specialist. Horse meat sashimi is the highlight of the menu.

Recommended dishes

Horse liver cubes 2,200 yen
Marucho (intestine) 950 yen
Fatty horse meat sashimi 2,500 yen

1F, Rosé Hanabatakekan, 3-11 Shinshigai, Chuo-ku, Kumamoto City
TEL: 096-351-0330
Hours: 18:00-23:00 (LO 22:30)
Capacity: 35 No parking
Closed on Sundays
*No under-age customers



Complimentary horse meat miso tofu (small)

17 SUGANOYA Shinshigai 菅乃屋 新市街店



We have a large selection of standard horse meat dishes such as grilled horse meat, shabu-shabu, and Nigiri that make the most of the quality of the ingredients.

Recommended dishes

Horse liver sashimi 1,500 yen
Horse Nigiri (5 Pieces) 2,450 yen
5 kinds of Grilled Horse plate 2,000 yen

MAP③ E-5



18 HORMONE MAN ホルモンマン



Half price on small intestine (Akaushi beef)

The restaurant offers fresh Akaushi beef offal and meat raised in Kumamoto at reasonable prices. We also offer a variety of horse dishes, including Kumamoto's famous horse sashimi, horse yukhoe, and grilled horse. Solo diners are welcome!

Recommended dishes

Assorted Beef offal (3-cuts) Platter 1,298 yen
Japanese Brown galbi 1,408 yen
Horse sashimi 1,628 yen

MAP③ G-4

1F, Tenjinchibankan Building, 1-6-12, Shimotori, Chuo-ku, Kumamoto City
TEL: 096-355-4129
Hours: 17:00-25:00(LO 24:00)
[Sun]15:00-24:00(OS 23:00)
Capacity: 38 No parking
Irregular holidays.



19 Akaushi Dining yoka-yoka SAKURAMACHI Kumamoto あか牛 Dining yoka-yoka サクラマチマモト店



Complimentary soft drink

Enjoy our dishes made with safe and healthy Japanese Brown cattle from our ranch in Aso. In addition to our popular Japanese Brown donburi, we offer hamburgers, steaks, and other dishes using Japanese Brown, as well as course menus.

Recommended dishes

Aka Ushi beef donburi 2,290 yen
Aka Ushi beef flame-grilled steak haché 2,290 yen
Aka Ushi steak of the day (market price)

3F, SAKURAMACHI KUMAMOTO 3-10, Sakuramachi, Chuo-ku, Kumamoto City
TEL: 096-288-5029
Hours: 11:00-22:00(LO21:00)
Capacity: 48
Pay parking available
No scheduled holidays (closed when the building is closed)



20 Akaushi Dining yoka-yoka Teppan&Grill あか牛 Dining yoka-yoka 鉄板&グリル



Complimentary soft drink

We offer our signature Japanese brown beef dishes and fine cuisine made with carefully selected ingredients from Kumamoto Prefecture in a relaxed ambience.

Recommended dishes

Aka Ushi beef donburi 2,290 yen
Aka Ushi beef steak
Sirloin from 4,950 yen
rump from 3,960 yen
fillet from 5,280 yen
Aka Ushi beef flame-grilled steak haché 2,290 yen

MAP③ C-4

2F, Daiwa Roynet Hotels, 10-22, Hanabatacho, Chuo-ku, Kumamoto City
TEL: 096-324-7227
Hours: 11:00-22:00(LO21:00)
Capacity: 50 (private rooms available)
No parking
Open all year round
*Subject to temporary closing days.



Regional Cuisine
Kumamoto Area
Tabako
Horse Meat
Ryu Ushi
Horse Meat
Kumamoto Area
Horse Meat
Kumamoto Area
Horse Meat
Kumamoto Area
Horse Meat
Kumamoto Area
Horse Meat

Benefits you will receive by presenting this booklet.

Wheelchair accessible
Smoking seats available

21 Akaushi sumibiyakiniku SUMIKA

We buy a whole cow of carefully selected Japanese brown raised in Aso. Enjoy the taste of beef as you gather around a hearth in a traditional townhouse.

Recommended dishes

Various cuts of Aka Ushi beef from 800 yen
Seared Aka Ushi beef sashimi 1,300 yen
Premium marbled horse meat sashimi 2,400 yen

2F Otsuzuki Building, 7-17, Minamitsubomachi, Chuo-ku, Kumamoto City
TEL: 096-245-6727
Hours: 11:00-14:00
(*Reservation required)
17:00-23:00

Capacity: 32
No parking
Irregular holidays



あか牛炭火焼肉 炭薫

MAP② F-2



22 Yakiniku KITSUNE 焼肉 昆常

We buy the hole Aka Ushi beef grew up in Aso select carefully. We make the use of original Aka Ushi beef ingredients and mature to offer the various parts.

Recommended dishes

5 varieties of chef's choice meat 2,500 yen
Apple wrapped in sirloin 2,200 yen
Harami skirt steak 2,800 yen

3F, The Ginnan Building, 12-16, Hanabata-cho, Chuo-ku, Kumamoto City
TEL: 096-321-6277
Hours: 12:00-15:00
(*Reservation required)
18:00-23:00

Capacity: 24 No parking
Irregular holidays



MAP③ D-5



23 Ajidokoro OGAWA 味処 お川

Enjoy marbled horse sashimi, locally-sourced fish, and vegetables with sake and shochu at our restaurant. Our old establishment offers a view of Kumamoto Castle and the flavors of Kumamoto. We can accommodate single diners. We can accommodate single diners. *No children, please.

Recommended dishes

Marbled horse meat sashimi 2,750 yen
Boiled red Higo eggplant in dashi 440 yen
Horse Liver Sashimi (reservation required)
Market price

3F, Toraya Building, 4-10, Kamitori-cho, Chuo-ku, Kumamoto City
TEL: 096-353-2393
Hours: [Mon, Tue, Thu, Fri]
11:45-13:30
18:00-22:00(LO 21:30)

Capacity: 25
No parking
Closed on Sundays and public holidays.



MAP③ F-2



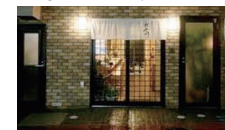
24 Local Cuisine HAYAKAWA

For 50 years, we have cherished our relationships with our customers. We recommend our kaiseki cuisine, meticulously prepared with fresh seasonal seafood and ingredients sourced in Kumamoto. Various horse meat dishes are also popular. Please enjoy the taste of our homeland in a private room with a sunken kotatsu.

Recommended dishes

Regional cuisine course meal 5,500 yen
Kaiseki Meal 4,400 yen
Eggplant marinated in mustard 550 yen

5-18, Ansei-machi, Chuo-ku, Kumamoto City
TEL: 096-352-1967
Hours: 17:30-22:30
Capacity: 50
(private rooms available)
No parking
Irregular holidays



郷土料理 はや川

MAP③ F-3



A complimentary small dish of the day

25 AOYAGI 青柳



A complimentary shot of local saké

Enjoy food made with locally-sourced ingredients, including a wide range of horse meat dishes, and seafood from the Sea of Ariake.

1-2-10, Shimo-tori, Chuo-ku, Kumamoto City
TEL: 096-353-0311
Hours: 11:30-14:30 (LO 13:30)
17:00-22:00 (LO 21:00)
Capacity: 140 (private rooms available)
No parking
Irregular holidays



Recommended dishes
Premium horse meat sashimi 3,300 yen
Aso Akaushi Beef steak 5,000 yen
Salt-grilled Japanese tiger prawns 1,200 yen

MAP③ E-3

26 HIGO NO JINYA 郷土・海鮮



10% off the bill (maximum 5,000 yen discount)
*The offer cannot be used in conjunction with other vouchers or discount offers and is only available to cash-paying customers.

We offer cuisine prepared in the Kumamoto style using local sea and mountain ingredients. Our dishes include local delicacies such as horse sashimi, Kumamoto Akaushi beef steak, and fresh seafood from Amakusa.

肥後の陣屋
1-5-20, Shimo-tori, Chuo-ku, Kumamoto City
TEL: 096-211-1414
Hours: [Mon-Sat] 17:00-23:00 (LO 22:00)
Last order for drinks, 22:30
Capacity: 170 (private rooms available)
Can eat up to 80 for a party. No parking
Closed on Sundays, 12/31~1/1
(Closed on Monday if Sunday and Monday are part of consecutive holidays)



Recommended dishes
5 varieties of horse meat sashimi (serves 2-3) 3,900 yen
Akaushi Beef round steak 2,500 yen
The original Kumamoto Castle Kawara Soba (serves 2) 3,000 yen

27 YAMAMI CHAYA 阿蘇庭山見茶屋



Asotei Yamami Chaya serves dishes made with various ingredients from the wilds of Aso, such as mustard green, vegetables, and wild vegetables. Enjoy regional cuisine such as Kumamoto's famous horse sashimi and Akaushi Beef.

1-1-2, Ninomaru, Chuo-ku, Kumamoto City (inside Sakuranobaba Johsaien)
TEL: 096-327-9293
Hours: 11:00-18:00
Capacity: 48
Facility parking lot
Closed on the last day of the year.



Recommended dishes
Sakura-zen (a meal including horse meat cooked on lava stone) 2,400 yen
Akaushi Beef bowl 1,900 yen
Dagojiru (soup) 640 yen

MAP③ A-3

28 GOROHACHI 五郎八本店



A complimentary glass of fruit wine

The old-establishment serves regional dishes that represent Kumamoto, and original creations. It is popular among local gourmants.

B1F, Ginnan Kaikan, 12-8, Hanabata-cho, Chuo-ku, Kumamoto City
TEL: 096-321-8568
Hours: 17:30-22:00 (OS 20:45)
Capacity: 80 (private rooms available)
No parking
Closed on Sundays (Closed on Monday if Sunday and Monday are part of consecutive holidays)



Recommended dishes
Prime marbled horse meat sashimi 2,750 yen.
Omelette with mentaiko 880 yen
Horse fillet steak 3,850 yen.

MAP③ D-4

Regional Cuisine MAP① MAP② MAP③ MAP④ MAP⑤

Benefits you will receive by presenting this booklet.

Wheelchair accessible Smoking seats available

29 SYARAKU 創作肥後料理 写楽

The menu includes a wide range of dishes from fresh seafood sourced directly from Kumamoto and Amakusa, regional dishes, and original creations.

1F, Shinshigai Parking, Park City 24, 2-8, Shinshigai, Chuo-ku, Kumamoto City
TEL: 096-311-5050
Hours [Mon-Thur] 17:00-23:30 (LO 23:00)
[Fri, Sat & day before a public holiday] 17:00-24:00 (LO 23:30)
Capacity: 124 (private rooms available)
Can seat up to 20 for a party.
No parking
Closed on Sundays (Closed on Monday if Sunday and Monday are part of consecutive holidays), 12/31, 1/1, 1/2



Recommended dishes
5 varieties of regional appetizers (marbled horse meat sashimi, karashi renkon, Aso Takamori no Dengaku, etc.) 1,980 yen
Teppan-grilled horse fillet steak 1,980 yen
Aka Ushi beef steak donburi (100g) 1,980 yen



5% off the bill (maximum 5,000 yen discount)
*The offer cannot be used in conjunction with other vouchers or discount offers, and is only available to cash-paying customers.

MAP③ D-5

30 OSYOUSHINA おしよしな 特酒ぶた居

Located in the Shimotori Arcade in central Kumamoto. We serve house ago dashi gyoza, horse sashimi, mustard-filled lotus root, rare horse liver sashimi, Amakusa Daio, and other local delicacies. (Private rooms and a smoking area are available.)

Munakata Bldg., 2F, 2-2-32, Shimotori, Chuo-ku, Kumamoto City
TEL: 096-245-7075
Hours: 17:00 - 23:00
(open until 24:00 on weekends)
Seats 50 (private rooms available)
No parking
Irregular holidays



Recommended dishes
Platter of Horse Sashimi (5 different cuts), including marbled horse 3,608 yen
3 Slices of Prime Marbled Horse (belly) 2,200 yen
We sell 10K pc. a month!! Grilled Ago Dashi Gyoza (8) 599 yen



A complimentary grilled horse intercostal

MAP③ F-5

31 ICHINOSOKO ビアレ스토랑 壱之倉庫

Kumamoto's top beer hall is housed in a 150-year old transplanted and renovated saké storehouse!

2-8, Minamitsuboi-machi, Chuo-ku, Kumamoto City
TEL: 096-325-3911
Hours: 11:30-15:00 (LO 14:00)
17:00-23:30 (LO 23:00)
Capacity: 120
No parking
Open all year round



Recommended dishes
Akaushi Beef bowl 1,430 yen
Garlic beef tongue 1,078 yen
Kaminoura pudding 385 yen



MAP② F-2

32 YOKOBACHI

Enjoy Kumamoto's regional dishes and Asian food in the stylish restaurant housed in a renovated old dwelling.

11-40, Kamitori-cho, Chuo-ku, Kumamoto City
TEL: 096-351-4581
Hours: [Sun-Thu] 17:00-23:30
[Fri-Sat] 17:00-24:00
Capacity: 100
(private rooms available)
No parking
Open all year round



Recommended dishes
Akaushi Beef on a stick 858 yen
Higo Trio Platter 3,630 yen
Sichuan Mapo Tofu 748 yen



MAP③ G-1

※LO (Last Order)

Map of the locations are in back

MAP① Kumamoto Station Area MAP② Central City MAP③ Downtown Area MAP④ Suizenji Area MAP⑤ Suburbs

33 Sosakuwasai KASHO 創作和菜 佳昇 *reservation required 2 days before



A complimentary glass of drink

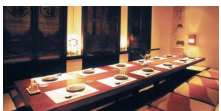
Our restaurant has private rooms, including one that can seat up to 27 guests, each with sunken kotatsu. We require reservations for all customers, but the restaurant can also be hired for private functions, such as family gatherings, group lunches, and dinners. If you do not have a reservation, please contact our sister restaurant "En".

Recommended dishes

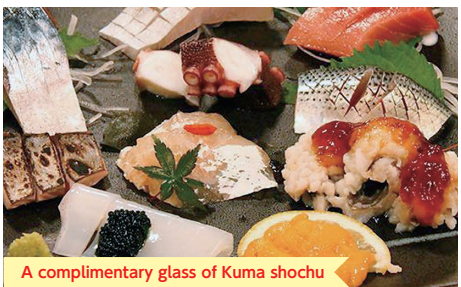
Irodori Zen set meal 2,500 yen
Red Sea Bream Rice set meal 5,500 yen
All-you-can-drink from 6,000yen

MAP② F-2

1F, Namikizaka NK Building, 1-1, Minamitsuboi-machi, Chuo-ku, Kumamoto City
TEL: 096-351-9400
Hours: 11:30-15:00 (LO 14:00) 17:30-22:00
Capacity: 54 (private rooms available)
No parking Closed on Tuesdays



34 FUKUYAMA 酒肴 フクヤマ



A complimentary glass of Kuma shochu

This restaurant is committed to the local production for local consumption of horse meat, seafood, and vegetables.

Recommended dishes

Value Assortment of Sashimi 1,320 yen
Handmade tofu (10 servings per day only) 440 yen
Japanese omelette in dashi 550 yen

MAP③ H-1

2-24, Kusaba-cho, Chuo-ku, Kumamoto City
TEL: 096-354-2290
Hours: 17:00-22:00
Capacity: 45
No parking
Closed on Mondays



35 Uogashi BANYA 魚河岸 番屋



10% off the bill (maximum 5,000 yen discount)
*The offer cannot be used in conjunction with other vouchers or discount offers, and is only available to cash-paying customers.

Customers can dine on sashimi of freshly caught seafood as the restaurant can offer the day's catch directly from Amakusa area.

Recommended dishes

Direct from Amakusa Assortment of 4 varieties of prime sashimi
Trio of Kumamoto appetizers (marbled horse meat sashimi, karashi renkon (lotus root stuffed with mustard), and Amakusa octopus steak)
Aso Akaushi Beef bowl
*Please inquire to the restaurant about the price.

MAP③ E-4

1F, Queen's Alley Building, 1-5-22, Shimo-tori, Chuo-ku, Kumamoto City
TEL: 096-319-1777
Hours [Tue-Thur, Sun, & public holidays] 17:00-22:30 (LO 22:00)
[Fri, Sat & the day before a public holiday] 17:00-23:00 (LO 22:30)
Capacity: 120 (private rooms available)
Irregular holidays



36 BIRDMAN バードマン



Birdman features yakitori and nabe (hot pot). Using only seasonal ingredients produced in Kumamoto Prefecture, we pride ourselves on our mizutaki, made with dashi prepared with Kumamoto's natural groundwater and Akadori chicken. Enjoy the true culinary delights of Kumamoto, an agricultural powerhouse you may not have even known existed.

Recommended dishes

Mizutaki from 4,180 yen per person
Lettuce Wrap 539 yen
Chicken Karaage (half) 1,100 yen

MAP③ E-4

1F, Extol Inn, 1-9-8, Shimo-tori, Chuo-ku, Kumamoto City
TEL: 096-354-2911
Hours: 17:00-1:00 (LO 24:00)
Capacity: 43
No parking
Irregular holidays



Regional Cuisine Kumamoto Area Tajiri Horse Meat Wagashi Prokusa Karashi Bunsen Hoto

Benefits you will receive by presenting this booklet.

Wheelchair accessible Smoking seats available

37 AMAKEN 馬刺しと焼き鳥 熊本郷土グルメの店 アマケン MAP③ E-4

We offer Kumamoto's famous horse meat sashimi and yakitori at affordable prices. You can order Yakitori grilled over binchotan charcoal even if you want just a single piece.

1-9-26, Shimo-tori, Chuo-ku, Kumamoto City
TEL: 096-355-2238
Hours: [Weekdays]18:00-midnight, [Weekends]18:00-2:00
Capacity: 74
No parking
Irregular holidays



Recommended dishes

Raw meatballs 380 yen
12 Assortment of Yakitori 2,180 yen
Horse Meat Sashimi Platter 3,300 yen



38 Okonomiyaki Teppanyaki DAICHAN お好み焼き・鉄板焼 大ちゃん MAP③ D-4

We primarily serve teppanyaki using horse meat, Japanese beef (from Kumamoto), and seafood sourced in the prefecture, and we also take great care in making okonomiyaki.

2F, Mizuta Building, 11-20, Hanabata-cho, Chuo-ku, Kumamoto City
TEL: 096-356-2905
Hours: [Mon-Sat] 17:00-23:00 [Sun & Holidays] 17:00-22:00
Capacity: 50 (private rooms available)
No parking
Open all year round



Recommended dishes

Marbled Horse Sashimi 2,200 yen
Horse liver sashimi 2,200 yen
Curry Cheese 1,480 yen



39 NABEYA TAMARI 鍋や TAMARI 熊本総本家 MAP③ D-4

The hotpot specialist is much loved in Kumamoto. The extensive menu includes hotpot of premium ofal, shio chanko, and jjigae.

3F, Mizuta Building, 11-20, Hanabata-cho, Chuo-ku, Kumamoto City
TEL: 096-352-5011
Hours: 17:30-24:00
Capacity: 110 (private rooms available)
No parking
Irregular holidays



A complimentary 980 yen Premium horse meat sashimi

Recommended dishes

An 8-course meal with a choice of hotpot + 110 min of unlimited drinks 4,400 yen
A hotpot of choice + All-you-can-eat 25 courses + 110 min unlimited drinks 4,378 yen
(Fri, Sat, day before holiday +550 yen)
Horse liver sashimi 1,650 yen



40 YAPPA HIGH RICH やっぱはいりっち MAP③ E-5

Our handmade whole buckwheat noodles are boiled for ten seconds. We serve 120 kinds of local sake, rice shochu, premium barley shochu, potato shochu, and more in a Japanese-style setting with jazz playing in the background. Omakase (chef's choice) dishes and all-you-can-drink menus are also available, and of course, soba noodles are included. Private rooms are available.

2F, Komono Kaikan, 13-13 Sakae-dori, Hanabata-cho, Chuo-ku, Kumamoto City
TEL: 096-355-2121
Hours: 18:00-24:00
Capacity: 35 (private rooms available)
No parking
Closed on Sundays
*Open on Sundays during 3-day weekends.



Recommended dishes

Morisoba 800 yen
Horse rib meat sashimi 1,000 yen
Soba miso 500 yen



※LO (Last Order)

Map of the locations are in back

MAP① Kumamoto Station Area MAP② Central City MAP③ Downtown Area MAP④ Suizenji Area MAP⑤ Suburbs

41 Parlour HIBARI パラーヒバリ



We offer a relaxing ambiance where you can enjoy lunch, daytime drinking, and standing while drinking.

Recommended dishes
Mackerel and Tofu 549 yen
Kuroge Wagyu Tendon
Stewed with Daikon 549 yen
Tonkotsu Sui Mai 244 yen per piece

MAP③ D-5

1F, Shinshigai Banner Building, 1-12, Shinshigai, Chuo-ku, Kumamoto City
TEL: 096-322-1212
Hour : 11:30-24:00 (LO 23:00)
Capacity: 40
No parking
Open all year round

42 SAKASOU 酒湊



We drive down to Amakusa to source fresh seafood for your enjoyment. Savor Kumamoto's famous horse meat sashimi and Kuroge Wagyu in a private room or at the counter.

Recommended dishes
Amakusa Gokyo Plate 1,790 yen per person
Horse Sashimi Platter 5,180 yen
Amakusa Daio Koroyaki 1,980 yen

MAP③ D-5

1F-4F, Matsushita Building, 4-18, Shinshigai, Chuo-ku, Kumamoto City
TEL: 096-352-7117
Hours: 17:00-23:30
Capacity: 229 (private rooms available)
No parking
Irregular holidays

43 TACHI SUSHI 立ち寿司



Serving fresh fruits of the sea at reasonable prices. The menu comes in four languages.

Recommended dishes
Seafood bowl 900 yen
Sushi set (steamed egg custard) 800 yen
Tuna feast 2,500 yen

MAP② E-5

2-8-5, Shimo-tori, Chuo-ku, Kumamoto City
TEL: 096-354-9999
Hours: 11:30-14:00
18:00-23:00
Capacity: 40
No parking
Irregular holidays

44 GEN ZO-NE 居酒屋 源 ZO-NE



We're just a short walk from the Gofukumachi tram stop and a couple of stops from Kumamoto Station. Our hideout-like izakaya is illuminated by lanterns. Even if you come alone, you can have a good time. We offer horse sashimi, horse tendon, and mustard lotus root. If you reserve a char-grilled pork belly or Boston butt, we can cook them for you in our courtyard BBQ. *Cash only

Recommended dishes
Horse Sashimi 3,000 yen
Braised horse tendon 900 yen
Karashi Renkon 700 yen
1 pork belly & 1 Boston butt, ¥4,000 each
Spicy chicken 800 yen

MAP② A-5

3-13, Uoya-machi, Chuo-ku, Kumamoto City
TEL: 096-352-5187
Hours: 18:00-23:00 (LO 22:00)
Capacity: 20 No Parking
Irregular holidays

Complimentary candle



Benefits you will receive by presenting this booklet.



45 BIRDMAN Kumamoto-Sta. バードマン熊本駅前店

We serve succulent yakitori and vegetable-wrapped skewers packed with the umami of seasonal veg. We also have a wide selection of sake!

1F, 3-26-47, Kasuga, Nishi-ku, Kumamoto City
TEL: 096-354-7787
Hours: 16:00-24:00
Capacity: 42
Parking available (affiliated parking lot)
Irregular holidays

Recommended dishes
Lettuce Wrap 539 yen
Kuro Karaage 748 yen
Horse Sashimi 1,870 yen



A complimentary glass of drink

46 NENKINSAKABA 新・お母さん食堂 明るく楽しく年金酒場

We have many rare sake and snacks, including our original Haraguro gyoza, peach-colored gyoza, and braised red and white ofal. Customers aged 60+ receive a 10% discount and can enjoy chatting with friendly staff.

2-22, Jyoto-machi, Chuo-ku, Kumamoto City
(Within Kumamoto Food Stall Village)
TEL: 096-274-8181
Hours: 12:00-23:00
Capacity: 12
No parking
Closed when the Village is closed

Recommended dishes
Haraguro gyoza 580 yen
Peach-colored gyoza 580 yen
Blanched shark tail fin 680 yen



10% discount for customers aged 60

*If a group includes a member aged 60 or older, the entire group is eligible for a 10% discount.

47 Asabiki TORIGEN あさびき鳥元

Our menu features one of Japan's largest native chickens, the Amakusa Daio. We also offer char-grilled chicken, yakitori, chicken sashimi, and more. We have a counter, sunken kotatsu, and table seating available. You are welcome to visit us even if you are alone.

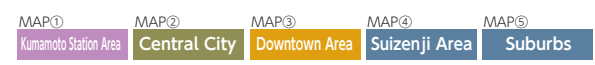
Bf, Ansei Building, 5-20, Ansei-machi, Chuo-ku, Kumamoto City
TEL: 096-326-8120
Hours: 18:00-23:00
Seats 24
(semi-private rooms available)
No parking
Irregular holidays

Recommended dishes
Grilled Amakusa Daio thighs (serves 1 to 2) 2,200 yen
Amakusa Daio sashimi from 700 yen
Grilled Amakusa Daio on sticks from 250 yen



※LO (Last Order)

Map of the locations are in back



49 ENISHI 創作和食 縁



A complimentary glass of drink

The Japanese restaurant serves dishes that hint at the season, with a lot of care given to preparing ingredients by hand.

Recommended dishes Irodori Lunch 2,750 yen Komachi Lunch 4,180 yen Kumamoto's Signature Kaiseki Dinner 6,600 yen

MAP 3 G-2

2F, Chohanji Easton Building, 5-40, Kamitori-cho, Chuo-ku, Kumamoto City TEL: 096-351-0824 Hours: 11:30-15:00(LO 14:00), 17:30-22:30(LO 21:00) Reservation only at night Capacity: 51 (private rooms available) No parking Closed on Tuesdays



50 MIZUE 和食 瑞恵



We always serve local seasonal fish, vegetables, and meat dishes, focusing on Kumamoto ingredients, and we also offer a variety of horse meat dishes, including our popular horse croquettes and horse meat cooked in rice. Please enjoy the taste and hospitality of our long-established restaurant with a glass of locally brewed sake.

Recommended dishes Multi-course meal at the counter (6 courses, updated daily) 2,180 yen Higo Platter (horse sashimi, mustard-filled lotus root, Hitomoji Guru-Guru) 2,500 yen Horse croquette 450 yen *The counter is only available in the main restaurant

MAP 3 G-3

1F, Kawasaki Building, 2-26, Ansei-machi, Chuo-ku, Kumamoto City TEL: 096-322-6973 Hours: 17:00-24:00 Capacity: 70(private rooms available) No parking Irregular holidays



51 Syunsai Dokoro MATSUKAWA 旬彩処 まつ川 MAP 3 E-4



A complimentary glass of Kuma shochu

All the seats are horigotatsu-style (tables laid over a sunken floor). Enjoy regional dishes, kaiseki cuisine, a la carte, and seasonal ingredients.

Recommended dishes Choice marbled horse meat sashimi 2,728 yen Grilled Amakusa Daio chicken seasoned with salt 1,078 yen Kumamoto Regional cuisine course meal 5,500 yen

MAP 3 E-4

BF, 1-7-7, Shimo-tori Chuo-ku, Kumamoto City TEL: 096-352-8366 Hours: 17:30-23:00 (LO 22:30) Capacity: 34 (private rooms available) No parking Closed on Sundays (Closed on Monday if Sunday and Monday are part of consecutive holidays)



52 Amakusa HYOROKU 郷土料理・活魚料理・寿司・おでん 天草瓢六 MAP 3 D-4



In addition to sushi and sashimi of freshly sourced seafood from Amakusa, local specialties such as horse sashimi, mustard-filled lotus root, and Hitomoji Guru-Guru, we serve dishes prepared with in-season ingredients.

Recommended dishes Premium Assortment of Sashimi 2,750 yen Premium Nigiri Sushi 2,970 yen Teriyaki of Conger Eel 1,980 yen

MAP 3 D-4

1F, HANABATA PLANET BLD, 10-18, Hanabata-cho, Chuo-ku, Kumamoto City TEL: 096-325-6444 Hours: 17:30-24:00 Capacity: 64 No parking Closed on Sundays (Closed on Monday if Sunday and Monday are part of consecutive holidays) Possibility of temporary closure



Regional Cuisine Kumamoto Area Tajarin Horse Meat Wagashi Amakusa Daio Hitomoji Hitomoto no Hitomoto no Hitomoto no

Benefits you will receive by presenting this booklet.

Wheelchair accessible Smoking seats available

53 Amakusa KAIMARU 天草海まる MAP 3 A-3

Located in Sakura-no-Baba Johsaien Garden, close to Kumamoto Castle, our restaurant's sea urchin croquettes and the bukkake kaisen zuke-don (seafood bowl) with spicy yuzu sauce made in-house are also popular among tourists.

Recommended dishes Bukkake Kaisen Zuke Donburi 1,760 yen Set Meal with Sea Urchin Croquettes 1,980 yen Premium Sea Urchin Croquette 450 yen *Possibility of price change

1-1-2, Ninomaru, Chuo-ku, Kumamoto City (inside Sakuranobaba Johsaien) TEL: 096-319-5073 Hours: 11:00-18:00 Subject to shorter business hours Capacity: 33 Parking available Closed on 12/31



54 NAKAMURA 和食 仲むら MAP 2 C-5

Savor seasonal Japanese cuisine while gazing at the Japanese garden. Please spend a relaxing evening in Kumamoto, enjoying local cuisine and choice wines.

Recommended dishes Nakamura Exclusive Kaiseki Meal 11,000 yen Regional Cuisine Kaiseki Meal from 7,700 yen Conger Eel Bowl 1,900 yen

50, Renpei-cho, Chuo-ku, Kumamoto City TEL: 096-351-0535 Hours: 11:30-15:00 (LO 14:30) 17:00-23:00 (LO 21:30) [Sun & public holidays] Open until 21:30 (LO 20:30) Capacity: 140 Parking for 4 cars. Closed on Wed, the end of the year, New Year's day



55 Japanese Restaurant HARAGUCHI 日本料理 はらぐち MAP 4 Suizenji

Enjoy high-quality Japanese cuisine in a restaurant adorned with classical folding screens, hanging scrolls, floral arrangements, and decorative antiques.

Recommended dishes Multi-Course Meal Yuri 7,260 yen Multi-Course Meal Botan 9,680 yen Premium Multi-Course Meal Shakuyaku 12,100 yen

2-16-3, Suizenji, Chuo-ku, Kumamoto City TEL: 096-383-1931 Hours: 11:30-22:00 By reservation only. Capacity: 30 (private rooms available) Can seat up to 30 by request. Parking for 14 cars. Open all year round (call to confirm)



A complimentary glass of house-made beverage

56 Japanese Restaurant KAMINOMIZU 料理方秘 神の水 MAP 4 Suizenji

Enjoy seasonal dishes prepared with an abundance of locally-sourced ingredients.

Recommended dishes Lunch from 1,650 yen Choice marbled horse meat sashimi 3,080 yen Japanese-style roast beef 2,200 yen

3-4, Suizenji Koen, Chuo-ku, Kumamoto City TEL: 096-237-7507 Hours: 11:30-14:00 (LO 14:00) 18:00-22:00 (LO 21:30) Capacity: 30 (private rooms available) No parking Irregular holidays



A complimentary shot of rice shochu.

MAP 1 Kumamoto Station Area MAP 2 Central City MAP 3 Downtown Area MAP 4 Suizenji Area MAP 5 Suburbs

※LO (Last Order)

57 TORAYA 活魚・鮨・郷土料理 とらや



We have a large underground tank filled with abundant wild fish from the Amakusa Sea. Enjoy a relaxing chat while savoring seasonal seafood. We also serve Kumamoto specialties such as mustard lotus root and horse meat sashimi.

Recommended dishes
Regional cuisine course meal 7,700 yen
Kuroshio course meal 11,000 yen
Toyama course meal 6,600 yen

MAP④ Suizenji

2-5-28, Suizenji, Chuo-ku, Kumamoto City
TEL: 096-383-4137
Hours: 11:30-14:30 17:00-22:00
Capacity: 200 (private rooms available)
Parking available
Unscheduled closing day once a week

58 GRILL de GYAN



The Yoshoku (Western-style food) restaurant is housed in a renovated house about 100 years old. Customers can enjoy horse meat sashimi and hamburger steak.

Recommended dishes
GYAN's signature dish garlicky grilled tuna 1,500 yen
Chicken in Guernsey sauce & garlic toast 1,680 yen
Horse meat hamburger steak 1,300 yen

MAP② F-2

5-21, Minamitsuboi-machi, Chuo-ku, Kumamoto City
TEL: 096-352-8821
Hours: 11:30-14:00
17:30-22:30 (LO 21:30)
[Sat & Sun & public holidays] -23:00 (LO 22:00)
Capacity: 100 No parking
Irregular holidays

59 NIKUBUDOU 肉葡萄



Enjoy wine, alcohol (japanese sake, malt whisky and so on) and appetizers.

Recommended dishes
Aka Ushi beef charcoal-grilled 1,980 yen
Cohsin Pork charcoal-grilled 1,078 yen
Amakusa Daio charcoal-grilled 1,298 yen

MAP③ E-4

5F-B, GM Building, 1-7-7, Shimo-tori, Chuo-ku, Kumamoto City
TEL: 096-323-6068
Hours: 15:00-22:00
Capacity: 19(private rooms available)
*can divide the room into 2
No parking
Closed on Mondays

60 Dining Café SAI ダイニングカフェ彩



Enjoy original creations that highlight local ingredients in a perfect spot with a panorama of Kumamoto Castle.

Recommended dishes
Lunch of the day 1,150 yen
East-meets-West Meal, from 3,500 yen

MAP③ D-2

14F, Kumamoto City Hall, Tetori Honmachi, Chuo-ku, Kumamoto City
TEL: 096-328-2954
Hours: 11:00-15:00
17:30-22:00*Reservation required (from 2 people/group / rent out)
Capacity: 100 (private rooms available)
No parking Closed on Sundays



Benefits you will receive by presenting this booklet.



61 Steak KAMON 鉄板焼ステーキ佳紋

In addition to our meticulously chosen steaks, the fresh abalone from Amakusa served with a special sauce is exquisite. We offer Japanese-style rooms with sunken kotatsu, perfect for family gatherings and parties. Reservations are required for regional cuisine.

Basement, Stella Kamitori Building, 3-15, Kamitori-cho, Chuo-ku, Kumamoto City
TEL: 096-351-4129
Hours: 11:30-15:00 (LO 14:00) Capacity: 48
17:30-23:00 (LO 21:00) (private rooms available)
No parking Irregular holidays



Recommended dishes (lunch)
Filet steak lunch 2,800 yen
Steak & Pilaf 2,690 yen
Omakase lunch 5,280 yen

Recommended dishes (dinner)
Abalone & Steak course 9,350 yen
Dinner course 7,480-16,500 yen

62 PRIMADONNA

Established in 1997. The restaurant is frequented by locals and those in the restaurant trade working the late shift.

Recommended dishes
Yukhoe of Kumamoro horse meat 1,310 yen
Higo Akaushi Beef sirloin steak (200g) 3,680 yen
Creamy pasta like tonkotsu (pork bone) ramen 1,320 yen

MAP③ D-4

1F, Shanse Shinagawa, 11-18, Hanabata-cho, Chuo-ku, Kumamoto City
TEL: 096-324-2989
Hours: 17:00-3:00(LO 2:30)
[Sun & public holidays] 17:00-24:00(LO 23:30)
Capacity: 75 (private rooms available)
No parking Closed on Mondays



No charge(except course menu). Free 30 min unlimited drinks extension.

63 GRILL SUEMATSU グリル末松

We serve teppan-grilled Kumamoto vegetables. We look forward to serving you delicious Kumamoto meat and carefully selected wines.

Recommended dishes
Beef T-Bone Steak (14 yen per gram) 10,780 yen per 700g
Aka Ushi beef rump (22 yen per gram)
Kuroge wagyu steak haché (200g) 1,690 yen

MAP③ G-4

1F, Business Hotel Shuttle, 4-1, Chuogai, Chuo-ku, Kumamoto City
TEL: 096-312-2929
Hours: Lunch 11:30-15:00(LO 14:30)
Dinner 17:00-23:00(LO 22:00)
Capacity: 30 No parking
Closed on Sundays



64 German Haus ゲルマンハウス

MAP④ Suizenji



Enjoy luxury in a casual way. Savor dishes carefully made with special ingredients in an elegant German ambiance.

*Possibility of closing early depending on the situation

Recommended dishes

Multi-Course Meal Berlin (lunch) 2,900 yen
Multi-Course Meal German (dinner) 3,600 yen
Kuroge Wagyu Fillet Steak Course 8,900 yen

6-38-16, Suizenji, Chuo-ku, Kumamoto City
TEL: 096-382-2555
Hours: Lunch 11:00 - 14:30(OS 13:30)
Dinner 17:00 - 21:00(OS 20:00)
Seats 26 (private rooms available)
Parking available
Closed on Wednesdays and 2nd and 4th Thursdays



65 Restaurant L'oasis レストランロアジス

MAP④ Suizenji



The restaurant that has been open more than ten years in Suizenji area. We make wholeheartedly with classical technique for using Kumamoto's local ingredients. We'll be waiting for your visit sincerely and we want to be your oasis.

Recommended dishes

Chef's choice full-course meal (4 types / lunch and dinner available) 6,600-15,000 yen

4-26, Suizenji Koen, Chuo-ku, Kumamoto City
TEL: 096-213-0555
Hours: 12:00-14:30
18:00-22:00
Seats 22 No Parking
Closed on Wednesdays (possibility of irregular holidays)



66 Whiskey CAT ウィスキーキャット

MAP③ C-4



The orthodox bar serves Irish stout and draft Guinness. Barreled whiskey, single malt Scotch whiskey, cocktails and mojitos are also popular.

Recommended dishes

Guinness (one pint) 1,200 yen
Fruit and champagne cocktail 1,800 yen
Mojito 1,500 yen

10-19, Hanabata-cho, Chuo-ku, Kumamoto City
TEL: 096-356-2818
Hours: 19:00-2:00
[Fri & Sat] Open until 3:00
Capacity: 11 No parking
Closed on Irregular holidays



67 Hostess bar SANSUI スナックさんすい

MAP③ E-5



Cheerful female staff are waiting to serve customers in the bar with a chilled ambiance. Single customers are welcome!!

Recommended dishes

90 min of unlimited drinks 5,000 yen
4,000 yen per customer if there are more than two.

5F, TM-13 Building, 3-4, Shinshigai, Chuo-ku, Kumamoto City
TEL: [12:00-17:00]096-325-5235
[19:00-25:00]096-325-2268
Hours: 19:00-1:00
Capacity: 100 (private rooms)
No parking Open all year round



Benefits you will receive by presenting this booklet.



68 Misty ミスティー

MAP③ E-4

Have an enjoyable time with members of staff that have beautiful smiles in the chic and relaxing setting.

Recommended dishes

Unlimited drinks (120 min) 4,400 yen

3F, Dai 3 RIKI Building, 13-49, Hanabata-cho, Chuo-ku, Kumamoto City
TEL: 096-351-2177
Hours: 20:00-1:00
Capacity: 30 No parking
Closed on Sundays and public holidays



69 VOYAGER

MAP② G-4

You can enjoy many domestic and international craft beers. Smash burgers are also popular. Beers are also available from lunch time. Please enjoy your relaxing time.

Recommended dishes

STANDARD DOUBLE BURGER 1,480 yen
BLT SANDWICH 1,480 yen
BIG VOYAGER BURGER 2,530 yen
*Chips and soft drink included

1B, River Port 9, 1-1-26, Kuhonji, Chuo-ku, Kumamoto City
TEL: 090-6631-1630
Hours: 11:30-14:00
18:00-24:00
Capacity: 20
No parking
Closed on Sundays and Mondays



70 FREEDOM SMILE フリーダムスマイル

MAP① A-5

We have been renewed to specialize in takoyaki. We've got the first prize in Kumamoto Prefecture and the second prize in Kyushu area in the Kyushu Takoyaki Championship. One of the recommended dish is the Amakusa salt takoyaki, which was used Amakusa salt.

71 Po-tama Aso Kumamoto Airport ポータマ阿蘇くまもと空港店

MAP⑤ Nishihara Higashiku

Pork and egg rice balls, Okinawan soul food made with Koshihikari rice from the Aso Shirakawa Suigen(Spring Source). The "Steak of KUMAMOTO Beef "AKAUSHI" " is a local delicacy and which one of our most popular rice ball because the Akaushi Steak is so juicy and tender.

Recommended dishes

Steak of KUMAMOTO Beef "AKAUSHI" 1,200 yen
Goya Tempura 600yen
Deep Fried Tofu & Abura Miso 700yen

1-3-48, Tasaki, Nishi-ku, Kumamoto City
TEL: 096-200-5786
Hours: 11:00-19:00 (LO18:30)
Capacity: 15
Parking available
Closed on Sundays and Mondays



Recommended dishes

Amakusa salt takoyaki 600 yen
Special takoyaki (with green onion and Agedama or bits of fried batter) 700 yen
Original soft serve ice cream 400 yen
Parfait decolated with Mitarashi Dango 850 yen



Complimentary Mozuku seaweed soup or softdrink.

Tourism Info

Scan the QR codes for more info

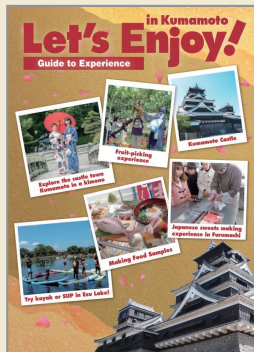


Kumamoto Sightseeing Guidebook Kumabon

It includes Kumamoto Castle and various other sights in Kumamoto!
*Japanese language only



(full version)



Hands-on Kumamoto Programmes

Find out about fun programmes such as unique Kumamoto experiences and interaction with the locals!



(taster)

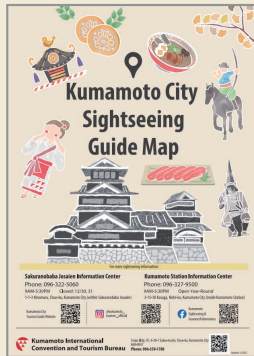


Kumamoto Foodie BOOK

Get info on restaurants, souvenir shops and accommodation in Kumamoto.



(food)



Kumamoto Sightseeing Map

The map displays Kumamoto's central area, including the station and Suizenji, as well as tourist facilities and accommodations.



(map)

City of Kumamoto Tourism Survey is underway

We are conducting a web survey to improve tourism in Kumamoto City and to help us prepare sightseeing projects in the future. (Time required : about 2 minutes) Amazon gift card (E-mail type) worth 500 yen will be given to 10 people chosen at random every month who have completed this questionnaire.

Scan the QR code to answer



MAP③ E-2

Eat Kumamoto's local foods!
And drink as well!
It's a landmark of foods and amusement.



熊本屋台村

KUMAMOTO FOOD STALL VILLAGE



A new landmark of foods and amusement OPENS! It includes many restaurants representing Kumamoto's local foods and multipurpose space "SDGs square".



In the middle of Kumamoto Food Stall Village, you can find a small street called, "Kaminoyoko-street", that is a Japanese traditional Yokocho-style (many small restaurants in the side of street). Every restaurant has counter seats, so you can feel Japanese retro atmosphere easily.



Please feel free to stop by at vending machine for 27 shochu breweries and try them!

Some of the food stalls



Beer Stand

SANJI

We serve Premium Malts using 3 special pouring techniques within 3 days of shipment from Suntory's Kumamoto factory. Savor the divine head!



Natural clams and seasonal tempura

Nagomi-An

We offer freshly fried tempura made with seasonal, locally sourced ingredients, as well as exquisite, grilled Asian hard clams.



Robata Italian wine

Il For

We offer Italian-style fireside cooking with wild trout from Yamato, pork from Kikuchi, and wild game from Kumamoto Prefecture. We highly recommend trying the rotoloino, baked in a dedicated pizza oven.



2-22, Jyoto-machi, Chuo-ku, Kumamoto City
Hours / 12:00-23:30
Closed / Wednesdays

*Village holidays are subject to change. Village holiday schedules and restaurant hours are posted on their respective Instagram accounts.

Get the Kumamoto City Tram 18 min from Kumamoto Eki-Mae
Alight at Torichosuji and walk 1 min 24 min from Kengunmachi
11 min from Shin-Suizenji Eki



■ Lunch time available

Number	Restaurant Name	TEL	Lunch Time	Page
1	Kumamoto Ramen KOMURASAKI	096- 325-8972	11:00-16:00 (LO15:30) Closed/End of the year and New Year holidays.	4P
2	Kumamoto Ramen RAMEN AKAGUMI	096- 325-8766	11:00-23:30(LO23:00) Closed/Open all year round	4P
3	Kumamoto Ramen Kumamoto Tonkotsu DEN	096- 354-9822	[Monday to Saturday] 11:30-3:00 (LO2:30) [Sunday / Holiday] 11:30-1:00 (LO0:30) Closed/New Year's Day	4P
4	Kumamoto Ramen KOKURYUKO	096- 353-0929	11:00-14:00 (LO13:30) Closed/Sunday	4P
5	Kumamoto Ramen Kumamoto Ramen KOKUTEI	096- 352-1648	10:30-21:00 (LO20:30) Closed/Please refer to Home page	5P
6	Kumamoto Ramen OCEAN'S SEVEN	090- 8221-6659	[Weekdays] 11:00-16:00 (LO15:45) [Sat, Sun & Holidays] 11:00-16:30 (LO16:15) Closed/Closed when the zoo is closed.	5P
7	Kumamoto Ramen Kumamoto Ramen TONBI	080- 3221-0648	11:30-15:00(LO14:30) Closed/Monday(if Monday is a public holiday, lunch time available and closed on Tuesdays)	5P
8	Kumamoto Ramen Butasoba JYUGOYA	—	11:00-15:30 Closed/Closed on Wednesdays	5P
9	Taipien KOURANTEI	096- 352-7177 Reservation phone	11:00-21:00(LO20 :00) Closed/Open all year round	6P
10	Taipien Chinese cuisine ENEN	096- 353-3913	11:30-14:00(LO13:30) *Closes when ingredients are used up Closed/Saturday, Sunday and public holidays, Irregular holidays	6P
11	Taipien Chinese Restaurant MARUMI	096- 272-4949	11:30-22:00(LO21:00) Closed/Monday (closed on Tuesday if Monday is a public holiday)	6P
15	Horse Meat BATAN GYUTAN	080- 3746-3779	11:00-16:00 (LO15:30) Closed/Irregular holidays	7P
19	Aka Ushi Beef Akaushi Dining yoka-yoka SAKURAMACHI Kumamoto	096- 288-5029	11:00-22:00 (LO21:00) Closed/No scheduled holidays (closed when the building is closed)	8P
20	Aka Ushi Beef Akaushi Dining yoka-yoka Teppan&Grill	096- 324-7227	11:00-22:00 (LO21:00) Closed/Open all year round *Subject to temporary closing days	8P
21	Aka Ushi Beef Akaushi sumibiyakiniku SUMIKA	096- 245-6727	11:00-14:00 *Reservation required) Closed/Irregular holidays	9P
22	Aka Ushi Beef Yakiniku KITSUNE	096- 321-6277	12:00-15:00 *Reservation required) Closed/Irregular holidays	9P
23	Local food Ajidokoro OGAWA	096- 353-2393	11:45-13:30 Closed/Wednesday,Saturday,Sunday, public holidays	9P
25	Local food AOYAGI	096- 353-0311	11:30-14:00 (LO13:30) Closed/Irregular holidays	10P
27	Local food YAMAMI CHAYA	096- 327-9293	11:00-18:00 Closed/End of year	10P
31	Izakaya Japanese -style bar ICHINOSOKO	096- 325-3911	11:30~15:00 (LO14:00) Closed/Open all year round	11P
33	Izakaya Japanese -style bar Sosakuwasai KASHO	096- 351-9400	11:30~15:00 (LO14:00) Closed/Tuesday *reservation required 2 days before	12P
41	Izakaya Japanese -style bar Parlour HIBARI	096- 322-1212	11:30-24:00 (LO 23:00) Closed/Open all year round	14P
43	Izakaya Japanese -style bar TACHI SUSHI	096- 354-9999	11:30-14:00 Closed/Irregular holidays	14P
46	Izakaya Japanese -style bar NENKINSAKABA	096- 274-8181	12:00-23:00 Closed/Closed when the village is closed	15P

Number	Restaurant Name	TEL	Lunch Time	Page
49	Japanese food ENISHI	096- 351-0824	11:30-15:00 (LO14:00) Closed/Tuesday	16P
53	Japanese food Amakusa KAIMARU	096- 319-5073	11:00-18:00 Closed/12/31	17P
54	Japanese food NAKAMURA	096- 351-0535	11:30-15:00 (LO14:30) Closed/Closed on Wed, the end of the year, New Year's holiday	17P
55	Japanese food Japanese Restaurant HARAGUCHI	096- 383-1931	11:30-22:00 *Reservation required Closed/Open all year round(call to confirm)	17P
56	Japanese food Japanese Restaurant KAMINOMIZU	096- 237-7507	11:30-14:00 (LO 14:00) Closed/Irregular holidays	17P
57	Japanese food TORAYA	096- 383-4137	11:30-14:30 Closed/Unscheduled closing day once a week	18P
58	Western food GRILL de GYAN	096- 352-8821	11:30-14:00 Closed/Irregular holidays	18P
60	Western food Dining Café SAI	096- 328-2954	11:00-15:00 Closed/Sunday	18P
61	Western food Steak KAMON	096- 351-4129	11:30-15:00 (LO14:00) Closed/Irregular holidays	19P
63	Western food GRILL SUEMATSU	096- 312-2929	11:30-15:00 (LO14:30) Closed/Sundays	19P
64	Western food German Haus	096- 382-2555	11:00-14:30 (OS13:30) Closed/Wednesday, 2nd and 4th Thursday	20P
65	Western food Restaurant L'oasis	096- 213-0555	12:00-14:30 Closed/on Wednesdays (possibility of irregular holidays)	20P
69	Pubs VOYAGER	090- 6631-1630	11:30-14:00 Closed/on Sundays and Mondays	21P
70	Light Meat FREEDOM SMILE	096- 200-5786	11:00-19:00 (LO18:30) Closed/Sunday, Monday	21P
71	Light Meal Po-tama Aso Kumamoto Airport	096- 201-8880	[Mon-Thu] 7:00-19:00 [Fri-Sun & public holidays] 7:00-20:00 Open all year round	21P

■ for Vegetarians

Number	Restaurant Name	Number	Restaurant Name
25	AOYAGI *Advance notice is required	55	Japanese Restaurant HARAGUCHI *Reservation required
29	SYARAKU *Set meals only (must be reserved three days in advance)	56	Japanese Restaurant KAMINOMIZU *Reservation required
34	FUKUYAMA	60	Dining Café SAI
53	Amakusa KAIMARU	65	Restaurant L'oasis

■ for Muslims

Number	Restaurant Name	Number	Restaurant Name
25	AOYAGI *Advance notice is required	29	SYARAKU *Set meals only (must be reserved three days in advance)
26	HIGO NO JINYA *Seat meals only (from two diners, must be reserved three days in advance)	35	Uogashi BANYA *Seat meals only (from two diners, must be reserved three days in advance)

1 Ikinariya WATANABE A-3

いきなりやわたなべ

MAP③



The shop uses carefully selected sweet potatoes grown in Kumamoto Prefecture in the foothills of Mt. Aso. It specializes in Kumamoto's famous Ikinari dango (dumplings), handmade the old-fashioned way. The shop has long been patronized by local and national customers and is popular with the media and entertainment industry.

Inside Josaien Sakura no Koji, 1-1-2, Ninomaru, Chuo-ku, Kumamoto City
TEL: 096-346-0247
Hours: 9:00-18:00
Paid parking available at Josaien.
Closed at the end of the year.



Recommended

Kumamotojo Set
(an assortment of 8)

*Please inquire to the shop about the price.

2 Kumamoto Castle KOBAI-AN A-3

熊本城香梅庵

MAP③



Located in Sakura-no-Baba Johsaien at the foot of Kumamoto Castle, the store offers a variety of Japanese and Western confections that bring Kumamoto's history and culture to life, including Kumamoto's famous Homare no Jindaiko and Musha Gaeshi. Please stop by when you visit Kumamoto Castle.

Inside Josaien Sakura no Koji, 1-1-2, Ninomaru, Chuo-ku, Kumamoto City
TEL: 096-288-0039
Hours: 9:00-18:00
Paid parking available at Josaien.
Open all year round



Recommended

Happy Jindaiko Kumamon 1,394 yen

Musha Gaeshi, 10pc. 1,836 yen

Soft Serve Jindaiko Ice Cream Take-out 540 yen, eat-in 550 yen

3 Kumamoto Shunsaikan Sakura LIQUOR / Kuma BAR B-5

くまもと旬彩館さくら LIQUOR / くま BAR

MAP③



The liquor store offers a wide selection of Kumamoto's liquors and brews, including Kuma Shochu and locally produced sake, and Kuma BAR adjoining the store serves them by the glass.

Sakura Machi Kumamoto, B1, 3-10, Sakuramachi, Chuo-ku, Kumamoto City
Tel: 096-300-8111

Hours: 10:00 - 21:00
Parking: on-site parking and paid parking available
Open all year round

Recommended

Kamo no Mai 25° 660 yen

Sake tasting 770 yen

Kuma Shochu tasting 770 yen



4 Downtown Art Company ASAKUSAYA D-5

ダウントウンアートカンパニー 浅草屋

MAP②



The shop sells supplies for festivals. It also sells a wide range of Japanese sundries and souvenirs made in Japan. A short walk from the Shimotori Shopping Arcade!!

1F E. Shower Valley Building, 2-7-32, Shimo-tori Street, Chuo-ku, Kumamoto City
TEL 096-354-1944

Hours: [Mon-Sat] 10:00-18:30
[Sun & public holidays] 10:00-18:00

No parking
Closed on Tuesdays

Recommended

Kanji Kumamoto T-shirt (white) 1,200 yen

Kumamon Kumamoto hanging scroll 1,000 yen

Original wooden tag (small) 1,080 yen



5 MORI Karashirenkon A-4

森からし蓮根 有限会社

MAP②



The shop is the original maker of Kumamoto's famous karashi renkon. The crispy texture and the sinus-clearing heat are superb. Enjoy the authentic and original karashi renkon.

2-12-32, Shin-machi, Chuo-ku, Kumamoto City
TEL: 096-351-0001
Hours: 8:00-17:00
Parking available
Irregular holidays



Recommended

Karashi renkon (medium) 1,080 yen

Karashi renkon chips

(a box of 5 packets) 1,080 yen

7 KAWAKAMI Saketen F-2

川上酒店

MAP①



Some Kuma shochu and Japanese sake are available for tasting

The shop carries Kuma shochu from 26 distilleries. Some are available for free tasting. It also sells a variety of saké and wines produced in Kumamoto.

2-3, Yorozu-machi, Chuo-ku, Kumamoto City
TEL: 096-326-1568
Hours: 9:00-19:00
Parking available
Irregular holidays



Recommended

Kikuka Chardonnay Seseragi 2,700 yen

Kuma shochu from 1,200 yen

Saké produced in Kumamoto from 1,400 yen

6 Higo-Zogan MITSUSUKE A-3

肥後象嵌 光助

MAP②



10% off

Higo-Zogan is Kumamoto's traditional craft with a history, spanning over 400 years, as is the construction of Kumamoto Castle. Zogan was originally used for tsuba and is now widely used for accessories and stationery. The shop is also popular for its hands-on Zogan crafting experience.

3-2-1, Shin-machi, Chuo-ku, Kumamoto City
TEL: 096-324-4488
Hours: 9:00-17:00
(Sat & Sun & public holidays) 10:00-16:00

Parking available
Closed at the end of the year and New Year holidays.

Recommended

Kumamon's badge with strap 8,800 yen

Pendant 5,500 yen

Earrings 11,000 yen



8 CHOJUAN Kumamoto-Sta. C-4

長寿庵 熊本駅店

MAP①



Kumamoto Station, the gateway to Kumamoto, is home to a famous Ikinari dango store! Try our Ikinari dango as a gift or a snack for your family. We also deliver to other regions of Japan.

Kumamoto Station Higo Yokamon Ichiba, 3-15-30, Kasuga, Nishi-ku, Kumamoto City
TEL: 096-359-4647

Hours: 9:00-20:00 Parking available
(Affiliated parking lot)
Open all year round
(Closed when the building is closed)

Recommended

Ikinari dango 200 yen each

Grilled Ikinari dango 250 yen

Dorayaki 200 yen



MAP①

Kumamoto Station Area

MAP②

Central City

MAP③

Downtown Area

MAP④

Suizenji Area

MAP⑤

Suburbs

Map of the locations are in back

9 SUGANOYA Kumamoto-Sta.
horse meat specialist
馬肉専門店 菅乃屋 熊本駅店

C-4
MAP①



The souvenir shop specializes in "horse meat sashimi and products." It carries a selection of popular, high-quality horse meat sashimi. Please stop by when you come to Kumamoto Station.

Kumamoto Station Higo Yokamon Ichiba, 3-15-30, Kasuga, Nishi-ku, Kumamoto City

TEL: 096-355-2877

Hours: 9:00-20:00

Parking available
(Affiliated parking lot)

Open all year round
(closed when the building is closed)



Recommended

6 varieties of sliced horse meat 10,000 yen
3 varieties of sliced horse meat 3,600 yen
Set of sliced horse loin meat 2,400 yen

11 ANTAGATA DOKOSA Kumamoto-Sta.
あんたがたどこそ 熊本駅店

C-4
MAP①



5% off *Exclusions apply

Each confection is handmade by our confectioners. We offer a variety of confections, including the very popular "Higo Daiko," "Goma Daiko," bursting with the flavor of sesame seeds, and the old-fashioned "Suzume no Tamago."

Kumamoto Station Higo Yokamon Ichiba, 3-15-30, Kasuga, Nishi-ku, Kumamoto City

TEL: 096-288-5801

Hours: 9:00-20:00

Parking available(Affiliated parking lot)

Open all year round
(closed when the building is closed)

Recommended

Higo Daiko, 5pc., Kumamoto packet 756 yen
Suzume no Chocolate Tamago, 6pc. 540 yen
Kuromame Rakka, 3pc. 421 yen

10 Okashi no KOBAI Kumamoto-Sta.
お菓子の香梅 熊本駅店

C-4
MAP①



The shop sells Japanese confectionaries that convey Kumamoto's history and culture, including "Homare no Jindaiko" and "Mushagaeshi." At the sales demonstration, visitors can taste the freshly baked Marukintsuba prepared by artisans.

Kumamoto Station Higo Yokamon Ichiba, 3-15-30, Kasuga, Nishi-ku, Kumamoto City

TEL: 096-325-6777

Hours: 9:00-20:00

Parking available
(Affiliated parking lot)

Open all year round
(closed when the building is closed)



Recommended

Happy Jindaiko Kumamon 1,394 yen
Higo Tsuba (Sanmenyaki Marukintsuba), a set of 6 692 yen
Soft Serve Jindaiko Ice Cream (takeout only) 540 yen

12 HANAMARUDO
華まる堂

B-5
MAP③



Sweet potato grown in Kumamoto is wrapped with sticky dough.

Sakuramachi Kumamoto Bus Terminal Concourse, 3-10, Sakuramachi, Chuo-ku, Kumamoto City

TEL: 096-300-8116

Hours: 9:00 - 18:00

Parking available (on-site/tariffs apply)

Open all year round

Recommended

Ikinari Dango (dark bean jam) 170 yen
Chilled Ikinari Dango (a set of 4) 730 yen

13 SONOYA
煎匠 そのや

Suizenji
MAP④



We use eggs from the local Cocco Farm in Kumamoto. We are dedicated to hand-baking, and we demonstrate and sell our signature product, "Higo Mondo," one by one at our storefront. Please enjoy the freshly baked taste.

5-13, Suizenji Koen, Chuo-ku, Kumamoto City

TEL: 096-380-6175

Hours: 10:00 - 16:00

No parking

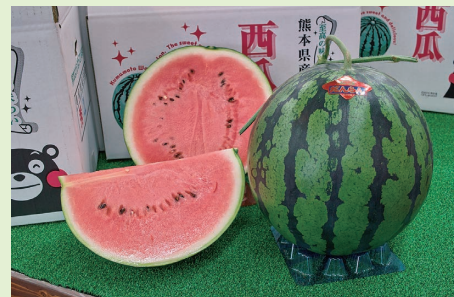
Closed on Wednesdays & Sundays

Recommended

Higo Mondo, 8pc. 520 yen
Higo Mondo, 8pc. individually wrapped 640 yen
Higo Mondo, 16pc. individually wrapped 1,180 yen

15 Roadside Station SUIKA-NO-SATO UEKI
道の駅 すいかの里植木

Ueki 2
MAP⑤



The roadside station is in Ueki-machi, famous for its water melons. It sells a variety of local products.

160-1, Iwano, Ueki-machi, Kita-ku, Kumamoto City

TEL: 096-272-2333

Hours: 9:00-18:30

Parking available

Closed every 3rd Thursday of the month

(Close the following non-holiday)

Recommended

Suika Hand-Baked Doughnut, 1pc. 180 yen
A 500ml bottle of Water Melon-flavored Nigori Saké 1,800 yen
Water melon (seasonal), market price.



14 Kumamoto Winery
熊本ワイナリー

Kita-ku
MAP⑥



The winery has enjoyed an excellent reputation in wine competitions. The shop sells a range of limited edition wines and cheese.

168-17, Izumi-machi, Kita-ku, Kumamoto City

TEL: 096-275-2277

Hours: 10:00-17:00

(Closed 12:00-13:00 during weekdays)

Parking available

Closed on Wednesdays.

Recommended

Kikuka Chardonnay 2,913 yen
From the vault 1,500 yen onwards
Kyoho no Shizuku 1,980 yen



16 FUDO Chikuwa Honpo
不動ちくわ本舗

Minami-ku
MAP⑥



This long-established shop has been in business for 165 years. In addition to its signature "Daifudo" (chikuwa on a bamboo skewer), the store offers tempura, karashi renkon (lotus root filled with mustard), and other items, making it the perfect place to pick up Kumamoto souvenirs.

505, Shimomiyajii, Jonanmachi, Minami-ku, Kumamoto City

TEL: 0964-28-2038

Hours: 9:00-18:00(varies according to seasons)

Parking available

Open all year round

Recommended

Karashi Renkon from 600 yen -
Daifudo chikuwa on skewer 340 yen

MAP①

Kumamoto Station Area

MAP②

Central City

MAP③

Downtown Area

MAP④

Suizenji Area

MAP⑤

Suburbs

Map of the locations are in back

17 KIYOMASA SEIKA Kumamoto-Sta. C-4 清正製菓 熊本駅店 MAP①



Hinokuni Kumamotojo is a bun with chestnut and cherry blossom fillings, created through a collaboration between the manga ONE PIECE and Kiyomasa Seika. It is exclusively sold in Kumamoto Prefecture to aid the Kumamoto Earthquake Reconstruction Project! If you come across it, please buy one.

Kumamoto Station Higo Yokamon Ichiba, 3-15-30, Kasuga, Nishi-ku, Kumamoto City
TEL: 096-355-0303
Hours: 9:00-20:00 Open all year round
(closed when the building is closed)
Parking available(Affiliated parking lot)

Recommended

Hinokuni Kumamotojo box of 8 1,300 yen
Luffy's Icho Pie box of 8 1,300 yen
Gekka no Kumamotojo Kumamon Ver. 15pc. 1,600 yen

18 FUJI BAMBI Kumamoto-Sta. C-4 フジバンビ 熊本駅店 MAP①



Brown Sugar Doughnut Stick is Kumamoto's signature confection! We are committed to using domestically produced flour to create familiar confections that will bring a smile to your face. Please stop by when you visit Kumamoto Station.

Kumamoto Station Higo Yokamon Ichiba, 3-15-30, Kasuga, Nishi-ku, Kumamoto City
TEL: 096-359-5910
Hours: 9:00-20:00
Parking available(Affiliated parking lot)
Open all year round
(closed when the building is closed)

Recommended

Brown Sugar Doughnut Stick, 12pc. 550 yen
Brown Sugar Doughnut Stick Hinokuni, 16pc. Packet 907 yen
Aso Jersey Milk Doughnut Stick, 20pc. 1,000 yen



19 FUKUDAYA Kumamoto Waguri-an Kumamoto-Sta. C-4 福田屋 熊本和栗庵 熊本駅店 MAP①



Fukudaya Kumamoto Waguri-an (JR Kumamoto Station) offers a variety of confections made exclusively from locally-grown Japanese chestnuts. Kumamoto is a leading producer of high-quality chestnuts in Japan. We handle everything from sourcing the chestnuts to processing the paste and making the confections. We look forward to serving you with confections made from Kumamoto's Japanese chestnuts, such as "Kuri Senri," a Grand Prix winner in the 2018 "Nippon Zenkoku Gotochi Oyatsu Ranking" and our very popular "Kurizuki."

Kumamoto Station Higo Yokamon Ichiba, 3-15-30, Kasuga, Nishi-ku, Kumamoto City
TEL: 0120-014-999(Fukudaya main store / Weekdays 9:00 - 17:00)
Hours: 9:00-20:00
Parking available
(Affiliated parking lot)

Recommended

Kuri Senri, 5pc. 729 yen
Kurizuki, 6pc. 1,361 yen
Open all year round
(closed when the building is closed)

1 Wa Collection MITO A-3 和 collection 美都 MAP③



The new shop opened in January 2023 in Sakura no Baba Josaien. The shop rents kimono and yukata to tourists. Customers who rent a complete set of kimono or yukata, including fitting, will receive a complimentary admission ticket to Suizenji Jojuen Garden, a traditional Japanese drawingstrung purse, and other gifts.

Josaien Sakuranokoji, 1-1-2, Ninomaru, Chuo-ku, Kumamoto City
TEL: 096-362-6439
Hours: 9:00 - 18:00
Paid parking is available at Josaien
Open all year round



Recommended

Kimono rental(Oct - May) 4,950 yen
Yukata rental(Jun - Sep) 4,950 yen

3 KICHIJI-EN Resort Farm Ueki 3 観光農園 吉次園 MAP⑤



You can enjoy picking fruits such as strawberries, grapes, apples, mandarin oranges, and pears throughout the year. Soft-serve ice cream and parfaits made with abundant fruits are also very popular. The farm is easily accessible, only 25 minutes by car from the center of Kumamoto!

556-1, Kitome, Uekimachi, Kita-ku, Kumamoto City
TEL: 096-273-2544
Hours: 10:00 - 17:00
(last admission 16:00)
Parking available
Irregular holidays



Recommended
All-you-can-eat strawberry picking from 1,400 yen (seasonal)
All-you-can-eat grape picking from 1,080 yen (depending on variety)
Apple picking - take-home, 1kg 670 yen

2 YUHOEN Fruits Land Nishi-ku 優峰園 フルーツランド MAP⑤



Our popular activities include a seasonal fruit picking experience and, in the summer, a rainbow trout fishing experience taking advantage of Mt. Kinbo's spring water and somen nagashi.

1144, Kawachimachitake, Nishi-ku, Kumamoto City
TEL: 096-288-1545
Hours: 9:00-17:00 Parking available
Closed [Fruit garden] Mondays (Oct-Nov)
Wednesdays (Dec-Sep)

[Restaurant] Wednesdays

Recommended

All-you-can-eat fruit picking
*The price varies depending on the types of fruit.
Please enquire for more information.
Rainbow trout fishing experience, one catch 700 yen
Somen nagashi from 680 yen per person



4 fun earth Suizenji Ezuko Park



Explore Kumamoto's oasis, Lake Ezu, by stand-up paddleboarding or canoeing. This freshwater lake is absolutely stunning and perfect for a day out in nature. Instructors will provide you with detailed instructions in areas where there is no current. Beginners can safely experience stand-up paddleboarding or canoeing with stable boards and canoes. Enjoy the extraordinary experience of gliding on water.

*By reservation only
TEL: 090-7158-5888
Hours: 9:30 - 16:00
Parking available
Irregular holidays

Recommended

Stand-up paddleboarding taster 7,000 yen
Canoeing (kayaking) taster 7,000 yen
eMTB taster 8,000 yen

Hot Spring Baths in the City of Kumamoto

Ueki Onsen Association 096-274-6830

Taxi

Kumamoto taxi 0120-0120-86

Kumamoto taxi (Tourist phone number) 096-379-8182

Kumamoto-kotsu taxi 0120-369-686

Higo-daiichi kotsu 096-354-2222

Naka Kyushu Izumi Taxi 096-365-0611

Car rental

Kumamoto Nissan Rent-a-Car 096-324-6363

TOYOTA Rent-a-Car 096-388-7171

Map of the locations are in back





A Kumamoto Castle Honmaru Rest Area D-3 MAP②

熊本城本丸お休み処

The rest area is located directly in front of the castle keep. It offers souvenirs of your visit, such as the "Gojo-in" (castle stamp) and products exclusive to Kumamoto Castle.



Busho stamp
Inner Citadel's exclusive Gojo-in stamp

1-1, Honmaru, Chuo-ku, Kumamoto City (inner citadel)
TEL: 096-327-8927
Hours: 9:00 - 16:30
Parking available (Ninomaru Parking lot, fee paying)
Closed on December 30 and 31
Transport: Kumamoto Castle / Ninomaru Parking bus stop, Sakuranobaba Josaien



B Kumamoto Castle Ninomaru Rest Area C-3 MAP②

熊本城二の丸お休み処

In addition to a model of Kumamoto Castle and photo panel displays, there is a donation box for Kumamoto Castle disaster relief. Visitors can also view a video about the restoration work.



Kumamoto Castle stamp

2-3, Ninomaru, Chuo-ku, Kumamoto City (Ninomaru Parking area)
TEL: 096-321-6150
Hours: 9:00 - 17:00
Parking available (Ninomaru Parking lot, fee paying)
Closed on December 30 and 31
Transport: Kumamoto Castle / Ninomaru Parking bus stop

Busho seal is available for purchase.



C Kumamoto Zoo Shop Higashi-ku MAP⑤

熊本市動植物園売店

The store offers various products to commemorate your visit, including red panda goods popular with children and original products from Kumamoto City Zoological and Botanical Gardens.



5-14-2, Kengun, Higashi-ku, Kumamoto City
TEL: 096-288-7530
Hours: 9:00 - 16:45 (The zoo closes at 17:00)
Parking is free on weekdays only.
Closed on Mondays, but the shop is open on the 4th Monday of the month and closes on Tuesday (or the following non-holiday weekday if Tuesday is a holiday)
Transport: Dobutsuen-mae or Doshokubutsuen Nishiguchi bus stop, and Doshokubutsuen Iriguchi tram stop.



D Kumamoto Museum Shop B-2 MAP②

熊本博物館ミュージアムショップ

The shop offers variety of items that excite curiosity such as original designed postcards related the museum's exhibit, stationary, experiment and craft kits.

The mascot for Kumamoto City Museum "Shachibey"



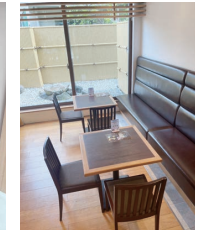
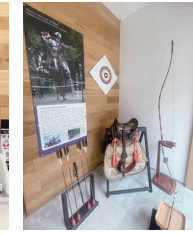
3-2, Furukyo-machi, Chuo-ku, Kumamoto City TEL: 096-273-7840
Hours: 9:00 - 17:00 (Last admission is 16:30)
There is no parking, so please use the Sanno-maru Parking lot (paid)
Closed on Mondays (Closed the following day if Monday is a public holiday), end of the year and New Year holidays (Dec 29 - Jan 3), and for maintenance work.
Transport: Hakubutsukan/Kyu Hosokawa Gyobu-tei bus stop, Sugidomomo tram stop.



E Yusuitei Suizenji Higo Hosokawa cultural center Suizenji MAP④

水前寺肥後細川文化発信拠点 湧水亭

There are exhibits works and tools related to the Higo Hosokawa culture. We also sells products using "Suizenjina (Gynura bicolor)" and offers a seasonal takeout menu. We also offer sightseeing guidance around Kumamoto City and guide services on weekdays.



5-23, Suizenji Koen, Chuo-ku, Kumamoto City TEL: 096-285-8893 Hours: 9:00 - 17:00 No Parking
Closed on Wednesdays (Closed the following day if Wednesday is a public holiday), end of the year (tentative schedule).
Transport: Suizenji Koen-mae bus stop, and Suizenji Koen tram stop

YAHOO! Shopping JAPAN Kumamoto Castle Shop



We have a variety of products only available in Kumamoto, including original Kumamoto Castle products and Kumamon goods.
A portion of the proceeds from the store will be donated to the Kumamoto Castle Disaster Relief Fund.



Yahoo Shopping Kumamoto Castle Shop Search 一般財団法人 熊本国際観光コンベンション協会 Kumamoto International Convention & Tourism Bureau

MAP① Kumamoto Station Area MAP② Central City MAP③ Downtown Area MAP④ Suizenji Area MAP⑤ Suburbs

Map of the locations are in back

No.	Hotel/Ryokan	Address	MAP	TEL	Number of rooms	Room type/rate	Parking lot rates
Central City	1	KKR HOTEL KUMAMOTO KKRホテル熊本 City Hotel	② D2	096-355-0121	54	*Call for rates	1,000yen
	2	ARK HOTEL KUMAMOTOJOMAE アーケホテル熊本城前 Business Hotel	② E2	096-351-2222	222	*Call for rates	900yen Multi-story parking, vehicle-type restrictions apply
	3	& and COMFY HOTEL Kumamotojo view アンドコンフィホテル熊本城ビュー Business Hotel	② E3	096-311-7070	98	*Call for rates	Information provided at the shared parking lot (fee paying)
	4	KUMAMOTO HOTEL CASTLE 熊本ホテルキャッスル City Hotel	② E3	096-326-3311	150	*Call for rates	1,000yen
	5	Kumamoto Wasuki Tsukasakan 熊本和数寄司館 City Hotel	② E3	096-352-5101	59	*Call for rates	Information provided at the shared parking lot
	6	hotel nikko kumamoto ホテル日航熊本 City Hotel	② E3	096-211-1111	191	T 35,090~ W 24,200~ SU 87,120~ 和 72,600~	Information provided at the shared parking lot (fee paying)
	7	TOYOKO INN Kumamoto Jyo Tori chosuji 東横INN 熊本城通町筋 Business Hotel	② F3	096-325-1045	198	S 7,700~ T (Two guests per room) 11,700~ EW (Two guests per room) 10,200~	1,000yen 16:00 - 10:00 the next morning *First-come-first-served Out of hours: ¥100 per hour
	8	HOTEL WING INTERNATIONAL Select Kumamoto ホテルウィングインターナショナルセレクト熊本 Business Hotel	② F3	096-325-1000	152	*Call for rates	Affiliated parking lot 1,200yen
	9	HOTEL MIELPARQUE KUMAMOTO ホテルメルパルク熊本 City Hotel	② F3	096-355-6311	60	*Call for rates	Call for rates
	10	GR HOTEL GINZADORI ジーアールホテル銀座通 Business Hotel	② E4	096-319-8888	70	S 6,800~ T 7,400~ W 8,300~	12 vehicles 1,400yen Motorcoaches are permitted
	11	R&B Hotel Kumamoto Shimotori R&Bホテル熊本下通 Business Hotel	② E4	096-356-7272	221	*Call for rates	No parking
	12	SOTETSU GRAND FRÉSA KUMAMOTO 相鉄グランドフレッサ熊本 Business Hotel	② D4	096-353-0203	247	S 6,000 T 8,000~ W 7,000~ Tri 9,000~	Information provided at the shared parking lot
	13	Washington Hotel Plaza Kumamoto 熊本ワシントンホテルプラザ Business Hotel	② E5	096-355-0410	320	*Call for rates	1,200yen
	14	KUMAMOTO GREEN HOTEL 熊本グリーンホテル Business Hotel	② D4	096-325-2222	78	S 8,000 SW 9,000 T 12,000	Information provided at the shared parking lot
	15	TOYOKO INN Kumamoto Shinshigai 東横INN熊本新市街 Business Hotel	② D4	096-324-1045	220	S 7,800~ T 11,800~ W 11,300~ PSK 8,600~ EW 10,300~	1,000yen *First-come-first-served
	16	Richmond Hotel Kumamoto-Shinshigai リッチモンドホテル熊本新市街 Business Hotel	② D4	096-312-3511	158	*Call for rates	Call for rates
	17	COMFORT HOTEL KUMAMOTO SHINSHIGAI コンフォートホテル熊本新市街 Business Hotel	② D4	096-211-8411	157	S 5,400~ T 8,000~ W 7,000~	Information provided at the shared parking lot
	18	REF Kumamoto by VESSEL HOTELS レフ熊本byベッセルホテルズ Business Hotel	② D4	096-328-7777	229	S 9,000~ T 12,500~ W 9,500~ Tri 13,000~	Information provided at the shared parking lot
	19	Kumamoto Tokyu REI Hotel 熊本東急REIホテル Business Hotel	② C4	096-322-0109	140	*Call for rates	Information provided at the shared parking lot (fee paying)
	20	KOKO HOTEL PREMIER KUMAMOTO KOKO HOTEL Premier 熊本 Business Hotel	② C4	096-355-6700	205	T 15,500~ W 9,500~	Affiliated parking lot
	21	nest hotel kumamoto ネストホテル熊本 Business Hotel	② B4	096-322-3911	201	S 8,500~ T 13,000~ W 13,000~ Tri 18,000~	1,000yen
	22	dormy inn KUMAMOTO 天然温泉 六花の湯 ドーミーイン熊本 Business Hotel	② C4	096-311-5489	290	*Call for rates	1,200yen

No.	Hotel/Ryokan	Address	MAP	TEL	Number of rooms	Room type/rate	Parking lot rates	
Central City	23	TOYOKO INN Kumamoto Sakuramachi Bus Terminal Mae 東横INN 熊本桜町バスターミナル前 Business Hotel	② C5	096-322-1045	152	S 7,000~ T 11,000~ W 10,200~ EW 19,200~	500yen	
	24	Mitsui Garden Hotel Kumamoto 三井ガーデンホテル熊本 Business Hotel	② C5	096-352-1131	226	*Call for rates	1,100yen	
	25	Hotel Hokke Club Kumamoto ホテル法華クラブ熊本 Business Hotel	② C5	096-322-5001	147	S 7,700 T 14,300(Two guests)	1,100yen	
	26	Dyeing and Hostel NAKASHIMAYA 染物と宿の中島屋 Guesthouse	② A4	096-202-2020	7	S 3,980~	No parking	
	27	SUPER HOTEL Lohas KUMAMOTO-TENNENONSEN スーパーホテルLohas熊本天然温泉 Business Hotel	② B5	096-351-9000	249	S 6,480~ Economy twin 11,000~	550yen *First-come-first-served	
	28	GRIDS PREMIUM HOTEL KUMAMOTO グリッドプレミアムホテル熊本 Business Hotel	② D5	096-312-2700	197	S 8,000~ T 9,000~ W 9,000~ Tri 9,000~	9 vehicles 1,500yen	
Kumamoto Station Area	29	ANA CROWNE PLAZA KUMAMOTO NEW SKY ANAクラウンプラザホテル熊本ニュースカイ City Hotel	① F3	096-354-2111	187	*Call for rates	1,500yen	
	30	Tsuki Ga Kirei Desune 月が綺麗ですね Guest house	① F5	080-8411-5251	4	S 4,000~ 和 4,300~ 洋 5,300~	No parking	
	31	HOTEL ROUTE-INN KUMAMOTO EKIMAE ホテルルートイン熊本駅前 Business Hotel	① D3	050-5847-7557	170	S 8,400~ SW 14,100~ T 15,900~	500yen *First-come-first-served	
	32	THE NEW HOTEL KUMAMOTO ザ・ニューホテル熊本 City Hotel	① D3	096-326-1111	123	*Call for rates	Information provided at the shared parking lot	
	33	TOYOKO INN Kumamoto Eki Mae 東横INN熊本駅前 Business Hotel	① C4	096-351-1045	331	S 7,800~ T 11,800~ W 11,300~ EW 10,300~ DXT 15,800~	Please enquire the hotel about parking	
	34	SUPER HOTEL KUMAMOTOEKIMAE TENNENONSEN スーパーホテル熊本駅前天然温泉 Business Hotel	① C4	096-324-9000	100	S 6,500~ T 8,700~ W 8,500~	Please enquire the hotel about parking	
	35	THE BLOSSOM KUMAMOTO THE BLOSSOM KUMAMOTO City Hotel	① C4	096-327-8763	203	*Call for rates	Affiliated parking lot 1,000yen	
	36	Hotel Honjin ホテル本陣 Ryokan	① C5	096-354-9191	40	S 7,000~ T 6,000~	Free	
	Suizenji Area	37	Youthpia Kumamoto Kumamoto-ken Seinenkaikan ユースピア熊本(熊本県青年会館) Publicly operated inn	④ Suizenji	096-381-6221	14	T 5,500~ 和 4,500~	Free
		38	Smile Hotel Kumamoto Suizenji スマイルホテル熊本水前寺 Business Hotel	④ Suizenji	096-383-8410	85	S 5,800~ T 7,400~ Family Twin 9,200~	800yen~ *In order of arrival on the day
39		Suizenji Mutual Aid Hall Gratia 水前寺共済会館 グレーシア Public Inn	④ Suizenji	096-383-1281	31	S 6,900~ T 6,400~ 和 6,100~ *closed/Sundays, Mondays	Free	
40		Matsuyabekkan 松屋別館 Business Hotel	④ Suizenji	096-213-1331	52	*Call for rates	Free	
41		Ryotei Matsuyahonkan Suizenji 旅亭 松屋本館 Suizenji Ryokan	④ Suizenji	096-381-1331	13	*Call for rates	Free 8 vehicles Other reserving parking lots are available	
42		Hotel Kumamoto Terrsa ホテル熊本テルサ City Hotel	④ Suizenji	096-387-7777	62	S 6,240 T 11,620 W 8,080 和 14,310	700yen	
43		Monohana 湧泉の宿 凧乃花 Ryokan	④ Suizenji	096-340-0727	5	和 13,200~	Free	
Suburbs	44	HOTEL PEACEFUL ホテルピースフル Business Hotel	⑤ Nishihara Higashi-ku	096-388-1188	87	S 5,200~ SW 5,700~ T 4,800~ 和 4,600~ *The rates are for four people.	Free Over-sized vehicles, except for goods, are charged extra.	
	45	KIKUNAN ONSEN U-BELL HOTEL 菊南温泉ウベルホテル City Hotel	⑤ Kita-ku	096-344-5600	86	*Call for rates	Free	
	46	Ryokan yayanoyu 旅館 ややの湯 Ryokan	⑤ Ueki 1	096-274-6383	6	和 25,000~ (1night 2meals /per person)	Free 50 vehicles	

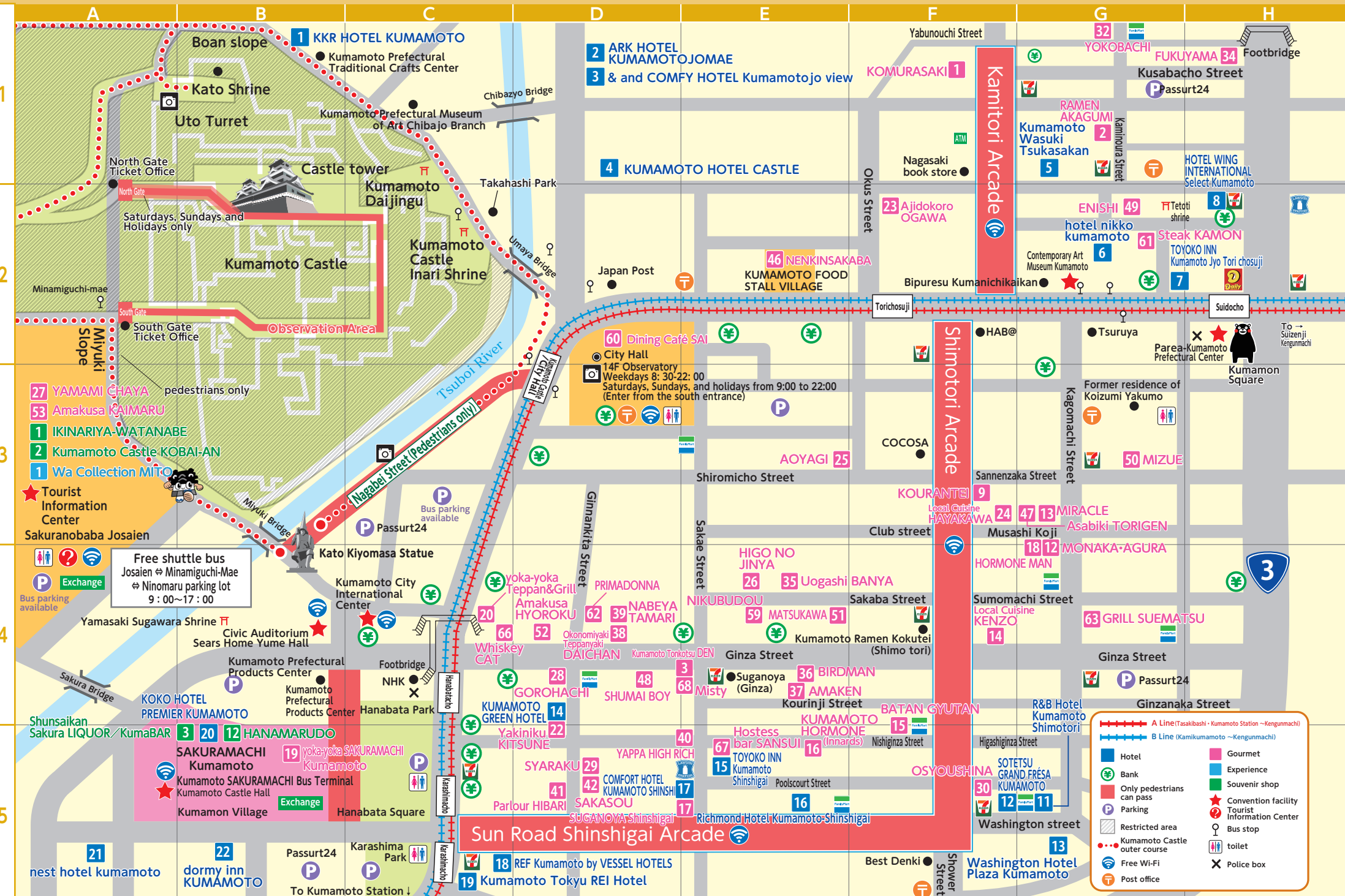


A Line (Takasabashi - Kumamoto Station - Kengunmachi)	Post office
B Line (Kamikumamoto - Kengunmachi)	Gourmet
Kumamoto Castle Loop Bus Shiromegurin Bus stop (= is the course of the Kumamoto Castle Tour Bus Shiromegurin)	Experience
Bus stop	Souvenir shop
Car rental	Hotel
Police box	Bank
Tourist Information Center	Free Wi-Fi
Wide area evacuation site	

Map② Central City



Map③ Downtown Area



Free shuttle bus
 Josaien ⇄ Minamiguchi-Mae
 ⇄ Ninomaru parking lot
 9:00~17:00

	A Line (Tasakibashi - Kumamoto Station - Kengunmachi)		Gourmet
	B Line (Kamikumamoto - Kengunmachi)		Experience
	Hotel		Souvenir shop
	Bank		Convention facility
	Only pedestrians can pass		Tourist Information Center
	Parking		Bus stop
	Restricted area		toilet
	Kumamoto Castle outer course		Police box
	Free Wi-Fi		Post office



Information



Kumamoto Station Tourist Information Center

【Address】

3-15-30, Kasuga, Nishi-ku, Kumamoto City
(inside of JR Kumamoto Station)

TEL: 096-327-9500

Hours: 9:00~17:30

Open all year round

English-speaking staff available

1-Day tickets Available

Free Wi-Fi Spot



Sakuranobaba Josaien Tourist Information Center

【Address】

1-1-3, Ninomaru, Chuo-ku, Kumamoto City
(inside of

Sakuranobaba Johsaien)

TEL: 096-322-5060

Hours: 9:00~17:30

Closed year end

English-speaking staff available

1-Day tickets Available

Free Wi-Fi Spot

Kumamoto Sightseeing & Gourmet on X
@info_kicb

Kumamoto Sightseeing & Gourmet on facebook
Motto Kumamoto-Travel info Kumamoto

Kumamoto Sightseeing & Gourmet on Instagram
@kumamoto-tourism-official



Kumamoto International Convention and Tourism Bureau

一般財団法人熊本国際観光コンベンション協会



〒860-0041

Senju Bldg. 5F, 4-30-1 Saikumachi, Chuo-Ku, Kumamoto city

TEL 096-359-1788 FAX 096-359-8520

URL <https://kumamoto-icb.or.jp/>

E-mail:kumaconn@kumamoto-icb.or.jp

Recruiting participating stores!!

*The information printed herein is correct as of June 2024.

*All prices are inclusive of tax.