



KUMAMOTO Gourmet

with coupons!

Gourmet Food of Kumamoto Local



Horse Meat



Horse meat is low in calorie and high in protein. Please enjoy horse meat with various ways such as sashimi and yakiniku.

Eat here.

4 12 13 14 15 16 17 18 19 22 23 24
25 26 27 28 29 30 32 33 34 35 36 37
38 39 40 41 42 44 45 47 48 49 50 51
52 54 56 57 58 59 60 61 62 63 64

Buy here.

9 15

Karashi Renkon



Lotus Root with Japanese Mustard

The dish is made by deep-frying lotus roots filled with mustard flavored miso. It makes a beautiful saké accompaniment.



Eat here.

12 13 14 15 16 17 18 23
24 25 26 28 29 30 32 33 34 35 36 37
42 44 45 48 49 50 51 52 56 57 58 59 62 63

Buy here.

5 15 16



Hitomoji no Guruguru

Boiled Hitomoji onion tightly wound up and served with miso seasoned with vinegar.



Eat here.

12 14 15 16 17 18 23 24 25 26
28 29 30 32 33 35 37 42 45
49 50 51 52 56 57 58 62



Amakusa Daioh

Amakusa Free Range Chicken.

It is also known as the phantom chicken. The meat is characterized by its firmness, bounce, and juiciness.

Eat here.

16 18 25 26 28 30 35 37 42 47 50 51 57 61



Aka Ushi Beef



Aka Ushi cows drink the pure Aso water and feed on the soft grass of the plains of Aso. Aka Ushi is tender, low in fat and healthy meat. Please try Aka Ushi Beef such as steak or barbecued.

Eat here.

10 13 15 18 19 20 21 22 25 26
27 28 29 31 32 35 37 38 42 44
49 56 61 62 64 65



Kumamoto Ramen



The ramen features a rich pork bone soup, straight and chewy, medium-thick noodles, and an abundance of fried garlic.

Eat here. 1 2 3 4 5 6 7 8 11

Buy here. 15



Taipien

Chinese style soup noodle of Kumamoto origin. It contains healthy glass noodles and vegetables.

Eat here.

9 10 11 18 26 29 48

Buy here. 15

Ikinari Dango



Sweet potato and bean paste dumpling of Kumamoto origin.

"Ikinari" means sudden. It comes from we can make it quickly even if a guest suddenly visits.

Buy here. 1 8 12 15



1 KOMURASAKI Kamitori-chuo こむらさき 上通中央店



The garlic chips, roasted uniquely to intensify their flavor, and tonkotsu (pork bone) broth without excess oil, marry well with the smooth, medium-fine noodles. Please enjoy the taste of Kumamoto, which has been unchanged since the restaurant began in 1954.

Recommended dishes
Osama Ramen 800 yen
Special Char Siu Men 1,200 yen
Natto Ramen 750 yen

8-16, Kamitori-cho, Chuo-ku, Kumamoto City
TEL: 096-325-8972
Hours: 11:00-16:00 (LO 15:30)
18:00-22:00 (LO 21:30)
Capacity: 40 (private rooms available)
No parking.
Closed at the end of the year and New Year holidays.

2 RAMEN AKAGUMI ラーメン赤組



For 550 yen, you can enjoy Kumamoto Ramen with flavor roasted garlic oil at this establishment!

Recommended dishes
Kumamoto Ramen 550 yen
Yokubari Ramen 850 yen
Stewed Offal 480 yen

7-29, Kamitori-cho, Chuo-ku, Kumamoto City
TEL: 096-325-8766
Hours: 11:00-24:00 (LO23:30)
Subject to change due to COVID-19 restrictions.
Capacity: 25
No parking
Open all year round

3 Kumamoto Tonkotsu DEN 伝統熊本豚骨伝

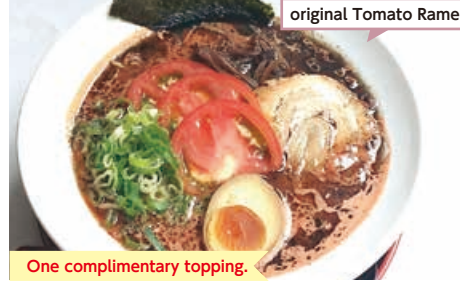


Ajisen Ramen's new brand. Picture is the Kun Ramen with the tantalizing aromatic and mildly bitter dark roasted garlic oil!

Recommended dishes
Den DX 1,150 yen
Den Ramen (Kumamoto Ramen) 800 yen
Kun Ramen 850 yen

13-4, Hanabata-cho, Chuo-ku, Kumamoto City
TEL: 096-354-9822
Hours:
[Mon-Sat] 11:30-3:00 (LO 2:30)
[Sun & public holidays] 11:30-1:00 (LO 0:30)
Capacity: 16 No parking
Closed on New Year's day.

4 Koku Ryu Kou 黒龍紅



Kumamoto Tonkotsu Ramen is well-loved by local customers. This restaurant also offers many original dishes, including tomato ramen and handmade gyoza sticks.

Recommended dishes
Char Siu Ramen 1,250 yen
Hand-prepped gyoza sticks 450 yen
Assortment of horse meat sashimi 2,200 yen

2-5-7, Kasuga, Nishi-ku, Kumamoto City
TEL: 096-353-0929
Hours: 11:00-14:00 (LO 13:30)
17:00-24:00 (LO 23:30)
Capacity: 25
Parking available
Closed on Sundays



Benefits you will receive by presenting this booklet.



5 Kumamoto Ramen Kokutei 熊本ラーメン専門店 黒亭本店

Established in 1957. The restaurant serves excellent ramen using a stock made with a pig's head only and house-made garlic oil.

2-1-23, Nihongi, Nishi-ku, Kumamoto City
TEL: 096-352-1648
Hours: 10:30-21:00 (LO 20:30)
Capacity: 25
Parking for 15 cars.
Check the website for closing days.



Recommended dishes
Ramen with an egg 1,030 yen
Ramen 830 yen



6 OCEAN'S SEVEN 熊本市動植物園内レストハウス OCEAN'S SEVEN

Beef with rice features tender, premium-quality steak cut into pieces and served over rice. Our food truck's signature dish is a popular choice among our customers. We also offer Kumamoto Ramen, With Rice dishes and snacks.

5-14-2, Kengun, Higashi-ku, Kumamoto City
TEL: 090-8221-6659
Hours:[Weekdays] 11:00-16:00(LO15:45)
[Sat. Sun & holidays] 11:00-16:30(LO16:15)
Seats 60 inside, 30 terrace seating
Parking available (Zoo & Botanical Gardens parking)
Closed when Zoo & Botanical Gardens are closed.



Recommended dishes
Beef with rice 1,000yen
Chicken with rice 900 yen
Tonkotsu Ramen 680 yen

7 Kumamoto Ramen TONBI 熊本拉麵 豚美

Our menu includes seven ramen varieties, all prepared with delicious pork bone broth. The pig's trotters are a popular dish with crispy skin and tender meat. We also offer take-out service.

4-25, Suizenji Koen, Chuo-ku, Kumamoto City
TEL: 080-3221-0648
Hours: 11:30-15:00, 17:30- last
Closes when ingredients are used up
Capacity: 21
No parking
Closed Sunday night & Mondays



Recommended dishes
Tonkotsu Ramen 850 yen
Crispy pig's trotters 350 yen
Super-spicy ramen 900 yen



8 Butasoba Jyugoya 豚soba 十五屋

The clear pork bone broth, cooked for hours at low temperatures, pairs perfectly with the ultra-thin 1m noodles. The new-fangled Kumamoto ramen can be enjoyed multiple times with various condiments.

6-8, Suizenji Koen, Chuo-ku, Kumamoto City
Suizenji Kanko Center
TEL: None
Hours : 11:00-17:00
Capacity: 26
Parking available
Open all year round



Recommended dishes
Pork soba set meal 1,250 yen
Pork soba (a la carte) 800 yen
Additional noodles with different seasonings 100-250 yen

Complimentary extra noodles of choice



9 Kourantei Shimotori-honten 紅蘭亭 下通本店



The Kourantei's main restaurant on Shimotori Street reopened in the spring of 2020. Enjoy authentic Chinese cuisine prepared by our skilled chefs in a relaxing ambiance. Table seating, tatami rooms, and private rooms are available. We cater to all kinds of requirements, including parties.

Recommended dishes

Taipien 1,080 yen
Sweet & Sour Pork 1,680 yen
Chilli Prawns 1,980 yen

本 Partial F-3
2-6F, 5-26, Ansei-machi, Chuo-ku, Kumamoto City Restaurant on the 2nd floor & party rooms on the 3rd to 6th floors
TEL: 096-352-7177 (Reservation)
Hours: 11:00-21:00(LO20:00)
Seats 90 (2nd floor main dining room)
No parking
Open all year round

10 Chinese cuisine Enen 中華旬菜 燕燕



Enjoy lovingly prepared dishes made with seasonal ingredients, including Kumamoto's famous Taipien and Sichuan-style Ma Po Tofu.

Recommended dishes

Ma La Tang En 1,000 yen
Sichuan-style Ma Po Tofu 1,200 yen
Akaushi beef in garlic sauce 2,000 yen

本 C-5
1F, Matsuzaki Building, 54-4, Rempo-cho, Chuo-ku, Kumamoto City
TEL: 096-353-3913
Hours: Lunch 11:30-14:30 (LO 14:00)
Dinner 18:00-21:30 (LO 21:00)
Capacity: 28 No parking
Closed Saturdays (evenings only), Sundays, holidays, and as required.
Irregular holidays

11 Chinese Restaurant Marumi 中国料理 まるみ



One free dish of gyoza

The extensive menu includes Champon, Taipiien, Gyoza, Ramen, and fried rice besides authentic Chinese dishes.

Recommended dishes

Taipien 913 yen
Champon 715 yen
Ramen 638 yen

ラ 本 Ueki 2
440-2, Taramizu, Ueki-machi, Kita-ku, Kumamoto City
TEL: 096-272-4949
0120-540-063
Hours: 11:30-22:00 (LO 21:00)
Seats 100 (private & party rooms)
Parking available(Motorcoaches may park)
Closed on Mondays (Closed on Tuesday if Monday is a public holiday)

12 Monaka・Agura もなか・安坐 (個室)



Monaka offers a spacious dining area with an open plan kitchen, while Anza is a private dining room with an elegant ambiance. Please enjoy the seasonal delicacies made from the finest ingredients in these two settings, along with sake from various regions of Japan.

Recommended dishes

Prime Horse Shabu-Shabu 3,190 yen per person
Sumptuous Horse Sashimi Platter from 3,520 yen
Fried Mustard-Filled Lotus Root 770 yen

G-4
2F, 1-6-12, Shimotori, Chuo-ku, Kumamoto City
TEL: 096-354-3488
Hours: 17:00-24:00
Capacity: 70
(private rooms available)
No parking
Closed on Sundays

Regional Cuisine
Kumamoto Area
Taipien
Horse Meat
Ma La Tang
Akaushi
Kumamoto No.1
Kumamoto No.2
Kumamoto No.3

Benefits you will receive by presenting this booklet.

Wheelchair accessible
Smoking seats available

13 Yuka Miracle 遊家 未ら来る

Enjoy a meal that meets your needs, whether dining with a small group or a large party. We offer a diverse range of dishes made with seasonal ingredients, including horse meat sashimi and regional cuisine.

Recommended dishes

Horse meat nigiri 1,280 yen
House-made mustard lotus root 680 yen
Horse meat sashimi platter 5,780 yen

5-15, Ansei-machi, Chuo-ku, Kumamoto City
TEL: 096-312-3799
Hours: 17:00-1:00
Capacity: 110
(private room available)
No parking
Irregular holidays



14 Local Cuisine Kenzo 馬肉郷土料理 けんぞう

Enjoy a wide range of dishes such as steak, tempura, and offal hotpot, besides horse meat sashimi.

Recommended dishes

Horse meat sashimi 2,420 yen
5-cuts platter (liver, tongue, heart, aorta, and shoulder) 3,960 yen
Horse meat nigiri sushi 1,320 yen

Basement, Shichiko Building, 1-8-24, Shimo-tori, Chuo-ku, Kumamoto City
TEL: 096-356-8775
Hours: 17:00-22:30 (LO 22:00)
Capacity: 28
No parking
Irregular holidays

A complimentary small dish

15 BATAN GYUTAN 馬タン牛タン

We look forward to serving you Kumamoto's famous foods, including horse tongue, a rarity even in Kumamoto, horse donburi, and Akaushi beef.

Recommended dishes

Char-grilled horse and beef tongue, 4,389 yen
The house special horse meat bowl, 1,419 yen

Lion Building Matsufuji kan, 1-11-17, Shimo-tori, Chuo-ku, Kumamoto City
TEL: 080-3746-3779
Hours: 11:00-16:00 (LO 15:30)
17:00-24:00 (LO 23:00)
[Sun & public holidays]
11:00-23:00 (LO 22:00)
Capacity: 50 (private rooms available)
No parking Irregular holidays

Complimentary beef tongue tempura

16 KUMAMOTO HORMONE (Innards) 熊本ホルモン

Kumamoto's leading horumon (offal) specialist. Horse meat sashimi is the highlight of the menu.

Recommended dishes

Horse liver cubes 2,200 yen
Marucho (intestine) 950 yen
Fatty horse meat sashimi 2,500 yen

1F, Rosé Hanabatakekan, 3-11 Shinshigai, Chuo-ku, Kumamoto City
TEL: 096-351-0330
Hours: 11:30-14:00 18:00-23:00 (LO 22:30)
Capacity: 35 No parking
Closed on Sundays
*No under-age customers

Complimentary horse meat miso tofu (small)

17 Suganoya Shinshigai 菅乃屋 新市街店



We have a large selection of standard horse meat dishes such as grilled horse meat, shabu-shabu, and Nigiri that make the most of the quality of the ingredients.

1F Comfort Hotel Kumamoto, 2-10, Shinshigai, Chuo-ku, Kumamoto City
TEL 0120-150-834
Hours: 17:00-22:00(LO 21:00)
Capacity: 54
No parking
Irregular holidays.12/31,1/1

Recommended dishes
Horse liver sashimi 1,500 yen
Horse Nigiri (5 kan) 2,450 yen
5 kinds of Grilled Horse plate 2,000 yen



18 Guruman Sannenzaka 馬刺・赤牛・天草大王 グルマン三年坂



Find the best of Kumamoto here. We are dedicated to serving horse sashimi and Akaushi beef, and sake. Popular for lunch are fatty horse donburi and Akaushi beef hamburger steak. We are open until 17:00 and have counter seating and private rooms.

1F, Sky Building, 5-6, Ansei-machi, Chuo-ku, Kumamoto City
TEL: 096-321-6200
Hours: [Lunch] 11:00-17:00 [Dinner] 17:00-22:00
Capacity: 40(private rooms available)
No parking
Open all year round

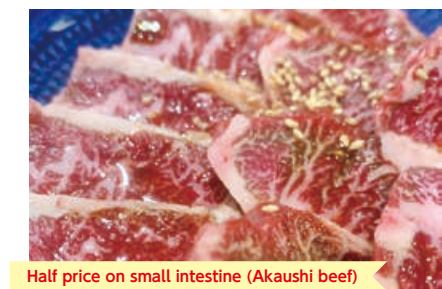
Recommended dishes
horse Liver Sashimi (while supply lasts) 2,000 yen
Kumamoto Meat Lunch - Kumamoto Steak Combo Donburi 2,200 yen
Kumamoto Meat Lunch - Fatty Horse Donburi 980 yen
You can enjoy both horse sashimi and Akaushi beef for lunch. Credit card etc. correspondence.



Complimentary Hitomaji Guru-Guru - A Kumamoto specialty

*Lunchtime is OK, too *1 plate per group

19 Horumon man ホルモンマン



The restaurant offers fresh Akaushi beef offal and meat raised in Kumamoto at reasonable prices. We also offer a variety of horse dishes, including Kumamoto's famous horse sashimi, horse yukhoe, and grilled horse. Solo diners are welcome!

1F, Tenjinichibankan Building, 1-6-12, Shimotori, Chuo-ku, Kumamoto City
TEL: 096-355-4129
Hours: 17:00-25:00(LO 24:00)
Capacity: 38 No parking
Irregular holidays.

Recommended dishes
Assorted Beef offal (3-cuts) Platter 1,298 yen
Japanese Brown galbi 1,408 yen
Horse sashimi 1,518 yen



Half price on small intestine (Akaushi beef)

20 Akaushi dining yoka-yoka SAKURAMACHI Kumamoto あか牛 Dining yoka-yoka サクラマチクマモト店



Enjoy our dishes made with safe and healthy Japanese Brown cattle from our ranch in Aso. In addition to our popular Japanese Brown donburi, we offer hamburgers, steaks, and other dishes using Japanese Brown, as well as course menus.

3F, SAKURAMACHI KUMAMOTO 3-10, Sakuramachi, Chuo-ku, Kumamoto City
TEL: 096-288-5029
Hours: 11:00-22:00(LO21:00)
Capacity: 48
Pay parking available
No scheduled holidays (closed when the building is closed)

Recommended dishes
Aka Ushi beef donburi 2,290 yen
Aka Ushi beef flame-grilled steak haché 2,290 yen
Steak of the day (market price)



※LO (Last Order)



Benefits you will receive by presenting this booklet.



21 Akaushi dining yoka-yoka teppan&grill あか牛 Dining yoka-yoka 鉄板&グリル

We offer our signature Japanese brown beef dishes and fine cuisine made with carefully selected ingredients from Kumamoto Prefecture in a relaxed ambience.

2F, Daiwa Roynet Hotels, 10-22, Hanabatacho, Chuo-ku, Kumamoto City
TEL: 096-324-7227
Hours: 11:00-22:00(LO21:00)
Capacity: 50 (private rooms available)
No parking
Open all year round
*Subject to temporary closing days.

Recommended dishes
Aka Ushi beef donburi 2,290 yen
Aka Ushi beef steak
Sirloin from 3,480 yen
rump from 4,950 yen
fillet from 5,280 yen
Aka Ushi beef flame-grilled steak haché 2,290 yen



Complimentary soft drink

22 Akaushi sumibiyakiniku Sumika あか牛炭火焼肉 炭薫

We buy a whole cow of carefully selected Japanese brown raised in Aso. Enjoy the taste of beef as you gather around a hearth in a traditional townhouse.

2F Otsuzuki Building, 7-17, Minamitsuboimachi, Chuo-ku, Kumamoto City
TEL: 096-245-6727
Hours: 17:00-23:00
Capacity: 32
No parking
Irregular holidays

Recommended dishes
Various cuts of Aka Ushi beef from 800 yen
Seared Aka Ushi beef sashimi 1,300 yen
Premium marbled horse meat sashimi 2,400 yen



23 Ajidokoro OGAWA 味処 お川

Enjoy marbled horse sashimi, locally-sourced fish, and vegetables with sake and shochu at our restaurant. Our old establishment offers a view of Kumamoto Castle and the flavors of Kumamoto. We can accommodate single diners. We can accommodate single diners. *No children, please.

3F, Toraya Building, 4-10, Kamitori-cho, Chuo-ku, Kumamoto City
TEL: 096-353-2393
Hours: [Mon, Tue, Thu, Fri] 11:45-13:30
18:00-22:00(LO 21:30)
Capacity: 25
No parking
Closed on Sundays and public holidays.

Recommended dishes
Marbled horse meat sashimi 2,750 yen
Boiled red Higo eggplant in dashi 440 yen
Horse Liver Sashimi (reservation required)
Market price

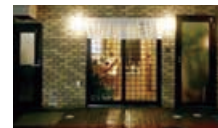


24 Local Cuisine Hayakawa 郷土料理 はや川

For 50 years, we have cherished our relationships with our customers. We recommend our kaiseki cuisine, meticulously prepared with fresh seasonal seafood and ingredients sourced in Kumamoto. Various horse meat dishes are also popular. Please enjoy the taste of our homeland in a private room with a sunken kotatsu.

5-18, Ansei-machi, Chuo-ku, Kumamoto City
TEL: 096-352-1967
Hours: 17:30-23:00
Capacity: 50 (private rooms available)
No parking
Irregular holidays

Recommended dishes
Regional cuisine course meal 5,500 yen
Kaiseki Meal 4,400 yen
Eggplant marinated in mustard 440 yen



A complimentary small dish of the day

25 AOYAGI 青柳



A complimentary shot of local saké

Enjoy food made with locally-sourced ingredients, including a wide range of horse meat dishes, and seafood from the Sea of Ariake.

Recommended dishes

Premium horse meat sashimi 3,300 yen
Aso Akaushi Beef steak 5,000 yen
Salt-grilled Japanese tiger prawns 1,200 yen

1-2-10, Shimo-tori, Chuo-ku, Kumamoto City
TEL: 096-353-0311
Hours: 11:30-14:30 (LO 13:30)
17:00-22:00 (LO 21:00)
Capacity: 140 (private rooms available)
No parking
Irregular holidays



26 Higo no Jinya 郷土・海鮮 肥後の陣屋



10% off the bill (maximum 5,000 yen discount)
*The offer cannot be used in conjunction with other vouchers or discount offers and is only available to cash-paying customers.

We offer cuisine prepared in the Kumamoto style using local sea and mountain ingredients. Our dishes include local delicacies such as horse sashimi, Kumamoto Akaushi beef steak, and fresh seafood from Amakusa.

Recommended dishes

Direct from Amakusa Assortment of 5 varieties of prime sashimi 1,400 yen
Choice Horse Sashimi 1,700 yen
The original Kumamoto Castle Kawara Soba (serves 2) 2,600 yen

1-5-20, Shimo-tori, Chuo-ku, Kumamoto City
TEL: 096-211-1414
Hours: [Mon-Sat] 17:00-23:00 (LO 22:00)
Last order for drinks, 22:30
Capacity: 160 (private rooms available)
Can eat up to 70 for a party. No parking
Closed on Sundays, 1/1, 1/2, 1/3
(Closed on Monday if Sunday and Monday are part of consecutive holidays)



27 Yamami Chaya 阿蘇庭 山見茶屋



Asotei Yamami Chaya serves dishes made with various ingredients from the wilds of Aso, such as mustard green, vegetables, and wild vegetables. Enjoy regional cuisine such as Kumamoto's famous horse sashimi and Akaushi Beef.

Recommended dishes

Sakura-zen (a meal including horse meat cooked on lava stone) 2,250 yen
Akaushi Beef bowl 1,800 yen
Dagojiru (soup) 600 yen

1-1-2, Ninomaru, Chuo-ku, Kumamoto City (inside Sakuranobaba Johsaien)
TEL: 096-327-9293
Hours: 11:00-18:00
Capacity: 48
Facility parking lot
Closed on the last day of the year.



28 Gorohachi 五郎八本店



A complimentary glass of fruit wine

The old-establishment serves regional dishes that represent Kumamoto, and original creations. It is popular among local gourmants.

Recommended dishes

Prime marbled horse meat sashimi 2,750 yen.
Omelette with mentaiko 880 yen
Akaushi Beef steak 2,750 yen.

B1F, Ginnan Kaikan, 12-8, Hanabata-cho, Chuo-ku, Kumamoto City
TEL: 096-321-8568
Hours: 17:30-21:30 (LO 21:00)
Capacity: 80 (private rooms available)
No parking
Closed on Sundays (Closed on Monday if Sunday and Monday are part of consecutive holidays)



Regional Cuisine 熊本 阿蘇 肥後 鹿兒島 大分 宮崎 鹿児島 沖縄

Benefits you will receive by presenting this booklet.

Wheelchair accessible Smoking seats available

29 Saraku 創作肥後料理 写楽

The menu includes a wide range of dishes from fresh seafood sourced directly from Kumamoto and Amakusa, regional dishes, and original creations.

Recommended dishes

5 varieties of regional appetizers (marbled horse meat sashimi, karashi renkon, Aso Takamori no Dengaku, etc.) 1,680 yen
Teppan-grilled horse fillet steak 1,980 yen
Aka Ushi beef steak donburi (100g) 1,980 yen

1F, Shinshigai Parking, Park City 24, 2-8, Shinshigai, Chuo-ku, Kumamoto City
TEL: 096-311-5050
Hours [Mon-Thur] 16:00-23:30 (LO 23:00)
[Fri, Sat & day before a public holiday] 16:00-24:00 (LO 23:30)
Capacity: 124 (private rooms available)
Can seat up to 20 for a party.
No parking
Closed on Sundays (Closed on Monday if Sunday and Monday are part of consecutive holidays). 12/31, 1/1



10% off the bill (maximum 5,000 yen discount)
*The offer cannot be used in conjunction with other vouchers or discount offers, and is only available to cash-paying customers.

30 Osyoushina おしよしな 特酒ぶた居

Located in the Shimotori Arcade in central Kumamoto. We serve house ago dashi gyoza, horse sashimi, mustard-filled lotus root, rare horse liver sashimi, Amakusa Daio, and other local delicacies. (Private rooms and a smoking area are available.)

Recommended dishes

Platter of Horse Sashimi (5 different cuts), including marbled horse 3,278 yen
3 Slices of Prime Marbled Horse (belly) 2,200 yen
We sell 10K pc. a month!! Grilled Ago Dashi Gyoza (8) 599 yen

Munakata Bldg., 2F, 2-2-32, Shimotori, Chuo-ku, Kumamoto City
TEL: 096-245-7075
Hours: 17:00 - 23:00
(open until 24:00 on weekends)
Seats 50 (private rooms available)
No parking
Irregular holidays



A complimentary grilled horse intercostal

31 Ichinosoko ビアレストラン 壱之倉庫

Kumamoto's top beer hall is housed in a 150-year old transplanted and renovated saké storehouse!

Recommended dishes

Akaushi Beef bowl 1,430 yen
Garlic beef tongue 1,078 yen
French toast 858 yen

2-8, Minamitsuboi-machi, Chuo-ku, Kumamoto City
TEL: 096-325-3911
Hours: 11:30-15:00 (LO 14:00)
17:00-23:30 (LO 23:00)
Capacity: 120
No parking
Open all year round



32 YOKOBACHI

Enjoy Kumamoto's regional dishes and Asian food in the stylish restaurant housed in a renovated old dwelling.

Recommended dishes

Akaushi Beef on a stick 770 yen
Higo Trio Platter 3,300 yen
Sichuan Mapo Tofu 638 yen

11-40, Kamitori-cho, Chuo-ku, Kumamoto City
TEL: 096-351-4581
Hours: 17:00-24:00
Capacity: 100
(private rooms available)
No parking
Open all year round



33 Sosakuwasai KASHO 創作和菜 佳昇



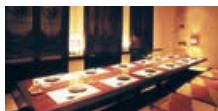
A complimentary glass of drink

Our restaurant has private rooms, including one that can seat up to 27 guests, each with sunken kotatsu. We require reservations for all customers, but the restaurant can also be hired for private functions, such as family gatherings, group lunches, and dinners. If you do not have a reservation, please contact our sister restaurant "En".

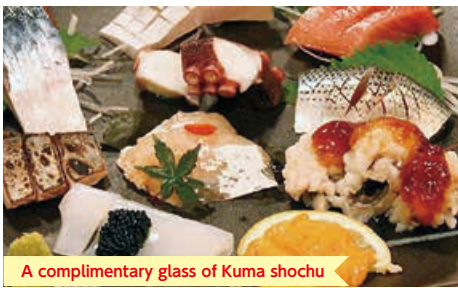
Recommended dishes

Irodori Zen set meal 2,500 yen
Red Sea Bream Rice set meal 5,500 yen
All-you-can-drink from 6,000yen

F-2
1F, Namikizaka NK Building, 1-1, Minamitsuboi-machi, Chuo-ku, Kumamoto City
TEL: 096-351-9400
Hours: 11:30-15:00 (LO 14:00)
17:30-22:30 (LO 21:00)
Capacity: 54 (private rooms available)
No parking Closed on Tuesdays



34 FUKUYAMA 酒肴 フクヤマ



A complimentary glass of Kuma shochu

This restaurant is committed to the local production for local consumption of horse meat, seafood, and vegetables.

Recommended dishes

Value Assortment of Sashimi 1,320 yen
Handmade tofu (10 servings per day only) 440 yen
Japanese omelette in dashi 550 yen

H-1
2-24, Kusaba-cho, Chuo-ku, Kumamoto City
TEL: 096-354-2290
Hours: 17:00-22:00
Capacity: 45
No parking
Closed on Mondays



35 Uogashi Banyu 魚河岸 番屋



10% off the bill (maximum 5,000 yen discount)
*The offer cannot be used in conjunction with other vouchers or discount offers, and is only available to cash-paying customers.

Customers can dine on sashimi of freshly caught seafood as the restaurant can offer the day's catch directly from Amakusa area.

Recommended dishes

Direct from Amakusa Assortment of 4 varieties of prime sashimi 1,562 yen
Trio of Kumamoto appetizers (marbled horse meat sashimi, karashi renkon (lotus root stuffed with mustard), and Amakusa octopus steak) 2,068 yen
Aso Akaushi Beef bowl 1,760 yen

E-4
1F, Queen's Alley Building, 1-5-22, Shimo-tori, Chuo-ku, Kumamoto City
TEL: 096-319-1777
Hours [Tue-Thur, Sun, & public holidays] 16:00-22:30 (LO 22:00)
[Fri, Sat & the day before a public holiday] 16:00-23:00 (LO 22:30)
Capacity: 120 (private rooms available)
Irregular holidays



36 Birdman バードマン



Birdman features yakitori and nabe (hot pot). Using only seasonal ingredients produced in Kumamoto Prefecture, we pride ourselves on our mizutaki, made with dashi prepared with Kumamoto's natural groundwater and Akadori chicken. Enjoy the true culinary delights of Kumamoto, an agricultural powerhouse you may not have even known existed.

Recommended dishes

Mizutaki from 4,180 yen
Lettuce Wrap 528 yen
Chicken Karaage (half) 979 yen

E-4
1F, Extol Inn, 1-9-8, Shimo-tori, Chuo-ku, Kumamoto City
TEL: 096-354-2911
Hours: 17:00-1:00 (LO 24:00)
Capacity: 43
No parking
Irregular holidays



Benefits you will receive by presenting this booklet.



37 AMAKEN 馬刺しと焼き鳥 熊本郷土グルメの店 アマケン

We offer Kumamoto's famous horse meat sashimi and yakitori at affordable prices. You can order Yakitori grilled over binchotan charcoal even if you want just a single piece.

1-9-26, Shimo-tori, Chuo-ku, Kumamoto City
TEL: 096-355-2238
Hours: [Weekdays]18:00-midnight, [Weekends]18:00-2:00
Capacity: 50
No parking
Irregular holidays



Recommended dishes

Raw meatballs 380 yen
10 Assortment of Yakitori 1,480 yen
Horse Meat Sashimi Platter 2,580 yen



38 Okonomiyaki Teppanyaki Daichan お好み焼き・鉄板焼 大ちゃん

We primarily serve teppanyaki using horse meat, Japanese beef (from Kumamoto), and seafood sourced in the prefecture, and we also take great care in making okonomiyaki.

2F, Mizuta Building, 11-20, Hanabata-cho, Chuo-ku, Kumamoto City
TEL: 096-356-2905
Hours: [Mon-Sat] 17:00-23:00
Capacity: 50 (private rooms available)
No parking
Closed on Sundays, Public holidays



Recommended dishes

Marbled Horse Sashimi 2,200 yen
Horse liver sashimi 2,200 yen
Curry Cheese 1,480 yen



39 NABEYA TAMARI 鍋や TAMARI 熊本総本家

The hotpot specialist is much loved in Kumamoto. The extensive menu includes hotpot of premium ofal, shio chanko, and jjigae.

3F, Mizuta Building, 11-20, Hanabata-cho, Chuo-ku, Kumamoto City
TEL: 096-352-5011
Hours: 17:30-24:00
Capacity: 110 (private rooms available)
No parking
Irregular holidays



Premium horse meat sashimi for 980 yen!

Recommended dishes

An 8-course meal with a choice of hotpot + 110 min of unlimited drinks 4,400 yen
A hotpot of choice + All-you-can-eat 25 courses + 110 min unlimited drinks 4,378 yen
(Fri, Sat, day before holiday +550 yen)
Horse liver sashimi 1,650 yen



40 Yappa High Rich やっぱはいりっち

Our handmade whole buckwheat noodles are boiled for ten seconds. We serve 120 kinds of local sake, rice shochu, premium barley shochu, potato shochu, and more in a Japanese-style setting with jazz playing in the background. Omakase (chef's choice) dishes and all-you-can-drink menus are also available, and of course, soba noodles are included. Private rooms are available.

2F, Komono Kaikan, 13-13 Sakae-dori, Hanabata-cho, Chuo-ku, Kumamoto City
TEL: 096-355-2121
Hours: 18:00-24:00
Capacity: 35 (private rooms available)
No parking
Closed on Sundays
*Open on Sundays during 3-day weekends.



Recommended dishes

Morisoba 800 yen
Horse rib meat sashimi, 1,000 yen
Soba miso 500 yen



※LO (Last Order)

Map of the locations are in back

Downtown Area Central City Kumamoto Station Area Suizenji Area Suburbs

41 Parlour Hibari パーラーヒバリ



We offer a relaxing ambiance where you can enjoy lunch, daytime drinking, and standing while drinking.

Recommended dishes
Mackerel and Tofu 540 yen
Kuroge Wagyu Tendon
Stewed with Daikon 540 yen
Tonkotsu Sui Mai 230 yen per piece

D-5
1F, Shinshigai Banner Building, 1-12, Shinshigai, Chuo-ku, Kumamoto City
TEL: 096-322-1212
Hour : 11:30-24:00 (LO 23:00)
Capacity: 40
No parking
Open all year round



42 SAKASOU 酒湊



We drive down to Amakusa to source fresh seafood for your enjoyment. Savor Kumamoto's famous horse meat sashimi and Kuroge Wagyu in a private room or at the counter.

Recommended dishes
Amakusa Gokyo Plate 1,480 yen per person
Horse Sashimi Platter 4,680 yen
Amakusa Daio Koroyaki 1,780 yen

D-5
1F-4F, Matsushita Building, 4-18, Shinshigai, Chuo-ku, Kumamoto City
TEL: 096-352-7117
Hours: 17:00-24:00
Capacity: 300 (private rooms available)
No parking
Irregular holidays



43 Tachi sushi 立ち寿司



Serving fresh fruits of the sea at reasonable prices. The menu comes in four languages.

Recommended dishes
Seafood bowl 900 yen
Sushi set (steamed egg custard) 800 yen
Tuna feast 2,500 yen

E-5
2-8-5, Shimo-tori, Chuo-ku, Kumamoto City
TEL: 096-354-9999
Hours: 11:30-14:00
18:00-23:00
Capacity: 40
No parking
Irregular holidays



44 GEN ZO-NE 居酒屋 源 ZO-NE



We're just a short walk from the Gofukumachi tram stop and a couple of stops from Kumamoto Station. Our hideout-like izakaya is illuminated by lanterns. Even if you come alone, you can have a good time. We offer horse sashimi, horse tendon, and mustard lotus root. If you reserve a char-grilled pork belly or Boston butt, we can cook them for you in our courtyard BBQ. *Cash only
Recommended dishes
Horse Sashimi 3,000 yen
Braised horse tendon 800 yen
Karashi Renkon 600 yen
1 pork belly & 1 Boston butt, ¥4,000 each
Spicy chicken 800 yen

A-5
3-13, Uoya-machi, Chuo-ku, Kumamoto City
TEL: 096-352-5187
Hours: 18:00-23:00 (LO 22:00)
Capacity: 20 No Parking
Irregular holidays



Complimentary candle

※LO (Last Order)



Benefits you will receive by presenting this booklet.



45 Birdman KUMAMOTO-station バードマン熊本駅前店

We serve succulent yakitori and vegetable-wrapped skewers packed with the umami of seasonal veg. We also have a wide selection of sake!

Recommended dishes
Lettuce Wrap 528yen
Kuro Karaage 748 yen
Horse Sashimi 1,738 yen

1F, 3-26-47, Kasuga, Nishi-ku, Kumamoto City
TEL: 096-354-7787
Hours: 16:00-24:00
Capacity: 42
Parking available (affiliated parking lot)
Open all year round



A complimentary glass of drink

46 NENKINSAKABA 新・お母さん食堂 明るく楽しく年金酒場

We have many rare sake and snacks, including our original Haraguro gyoza, peach-colored gyoza, and braised red and white ofal. Customers aged 60+ receive a 10% discount and can enjoy chatting with friendly staff.

Recommended dishes
Haraguro gyoza 550 yen
Peach-colored gyoza 550 yen
Blanched shark tail fin 600 yen

2-22, Jyotomachi, Chuo-ku, Kumamoto City (Within Kumamoto Food Stall Village)
TEL: 096-274-8181
Hours: 12:00-23:00
Capacity: 12
No parking
Closed when the Village is closed



10% discount for customers aged 60

*If a group includes a member aged 60 or older, the entire group is eligible for a 10% discount.

47 Asabiki TORIGEN あさびき鳥元

Our menu features one of Japan's largest native chickens, the Amakusa Daio. We also offer char-grilled chicken, yakitori, chicken sashimi, and more. We have a counter, sunken kotatsu, and table seating available. You are welcome to visit us even if you are alone.

Recommended dishes
Grilled Amakusa Daio thighs (serves 1 to 2) 2,200 yen
Amakusa Daio sashimi from 700 yen
Grilled Amakusa Daio on sticks from 250 yen

Ansei Building, 5-20, Anseicho, Chuo-ku, Kumamoto City
TEL: 096-326-8120
Hours: 18:00-23:00
Seats 24 (semi-private rooms available)
No parking
Irregular holidays



49 ENISHI 創作和食 縁



A complimentary glass of drink

The Japanese restaurant serves dishes that hint at the season, with a lot of care given to preparing ingredients by hand.

Recommended dishes
Irodori Lunch 2,500 yen
Komachi Lunch 3,850 yen
Dinner from 4,950 yen

G-2
2F, Chohanji Easton Building, 5-40, Kamitori-cho, Chuo-ku, Kumamoto City
TEL: 096-351-0824
Hours: 11:30-15:00(LO 14:00), 17:30-22:30(LO 21:00)
Reservation only at night
Capacity: 51 (private rooms available)
No parking Closed on Tuesdays



50 Mizue 和食 瑞恵



We always serve local seasonal fish, vegetables, and meat dishes, focusing on Kumamoto ingredients, and we also offer a variety of horse meat dishes, including our popular horse croquettes and horse meat cooked in rice. Please enjoy the taste and hospitality of our long-established restaurant with a glass of locally brewed sake.

Recommended dishes
Multi-course meal at the counter (6 courses, updated daily) 2,178 yen
Higo Platter (horse sashimi, mustard-filled lotus root, Hitomaji Guru-Guru) 2,200 yen
Horse croquette 450 yen *The counter is only available in the main restaurant

G-3
1F, Kawasaki Building, 2-26, Ansei-machi, Chuo-ku, Kumamoto City
TEL: 096-322-6973
Hours: 17:00-24:00
Capacity: 70(private rooms available)
No parking Irregular holidays



51 syunsai dokoro matsukawa 旬彩処 まつ川



A complimentary glass of Kuma shochu

All the seats are horigotatsu-style (tables laid over a sunken floor). Enjoy regional dishes, kaiseki cuisine, a la carte, and seasonal ingredients.

Recommended dishes
Choice marbled horse meat sashimi 2,728 yen
Grilled Amakusa Daio chicken seasoned with salt 1,078 yen
Kumamoto Regional cuisine course meal 5,500 yen

E-4
BF, 1-7-7, Shimo-tori Chuo-ku, Kumamoto City
TEL: 096-352-8366
Hours: 17:30-23:00 (LO 22:30)
Capacity: 34 (private rooms available)
No parking
Closed on Sundays (Closed on Monday if Sunday and Monday are part of consecutive holidays)



52 Amakusa Hyoroku 郷土料理・活魚料理・寿司・おでん 天草瓢六



In addition to sushi and sashimi of freshly sourced seafood from Amakusa, local specialties such as horse sashimi, mustard-filled lotus root, and Hitomaji Guru-Guru, we serve dishes prepared with in-season ingredients.

Recommended dishes
Premium Assortment of Sashimi 2,750 yen
Premium Nigiri Sushi 2,970 yen
Teriyaki of Conger Eel 1,980 yen

D-4
1F, HANABATA PLANET BLD, 10-18, Hanabata-cho, Chuo-ku, Kumamoto City
TEL: 096-325-6444
Hours: [Mon-Thu] 17:30-24:00 [Fri-Sat] 17:30-1:00
Capacity: 64 No parking
Closed on Sundays (Closed on Monday if Sunday and Monday are part of consecutive holidays)



Benefits you will receive by presenting this booklet.



53 Amakusa kaimaru 天草海まる

Located in Sakura-no-Baba Johsaien Garden, close to Kumamoto Castle, our restaurant's sea urchin croquettes and the bukkake kaisen zuke-don (seafood bowl) with spicy yuzu sauce made in-house are also popular among tourists.

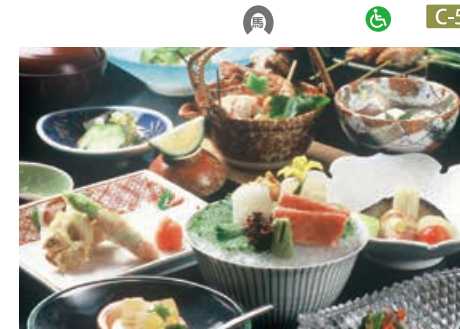
Recommended dishes
Bukkake Kaisen Zuke Donburi 1,650 yen
Set Meal with Sea Urchin Croquettes 1,980 yen
Premium Sea Urchin Croquette 430 yen
*Possibility of price change



54 Nakamura 和食 仲むら

Savor seasonal Japanese cuisine while gazing at the Japanese garden. Please spend a relaxing evening in Kumamoto, enjoying local cuisine and choice wines.

Recommended dishes
Nakamura Exclusive Kaiseki Meal 11,000 yen
Regional Cuisine Kaiseki Meal from 6,600 yen
Conger Eel Bowl 1,900 yen



55 Unagiya Masakazu 鰻や正一 (まさかず)

Unagiya Masakazu celebrated its first anniversary on 25 May. We meticulously prepare dishes using domestically sourced eel and carefully selected ingredients. Thank you for being our customer.

Recommended dishes
Masakazu Gozen 4,900 yen
Unagimeshi 4,200 yen
Una-Ju 3,200 yen



56 Japanese Restaurant Haraguchi 日本料理 はらぐち

Enjoy high-quality Japanese cuisine in a restaurant adorned with classical folding screens, hanging scrolls, floral arrangements, and decorative antiques.

Recommended dishes
Multi-Course Meal Yuri 7,260 yen
Multi-Course Meal Botan 9,680 yen
Premium Multi-Course Meal Shakuyaku 12,100 yen



A complimentary glass of house-made beverage

57 Japanese Restaurant Kaminomizu



A complimentary shot of rice shochu.

料理方秘 神の水

Enjoy seasonal dishes prepared with an abundance of locally-sourced ingredients.

Recommended dishes
Lunch from 1,650 yen
Choice marbled horse meat sashimi 3,080 yen
Japanese-style roast beef 2,200 yen

Suizenji

3-4, Suizenji Koen, Chuo-ku, Kumamoto City
TEL: 096-237-7507
Hours: 11:30-14:00 (LO)
18:00-22:00 (LO 21:30)
Capacity: 30 (private rooms available)
No parking
Irregular holidays

58 Takikawa りょうり亭 多喜加和



A complimentary glass of soft drink with a presentation of this booklet.

Enjoy seasonal dishes packed with nature's bounty.

Recommended dishes
Yorokobi Kaiseki Meal 5,500 yen
Yawaragi Kaiseki Meal 7,700 yen
Hinokuni Kaiseki Meal (regional cuisine) 8,800 yen

Suizenji

13-4, Suizenji Koen, Chuo-ku, Kumamoto City
TEL: 096-387-0300
Hours: 11:30-14:00 (LO)
17:00-21:00 (LO)
Lunch and dinner by reservation only.
Capacity: 80 (private rooms available)
Parking for 15 cars
Irregular holidays

Outdoor smoking area available

59 TORAYA 活魚・鮨・郷土料理 とらや



We have a large underground tank filled with abundant wild fish from the Amakusa Sea. Enjoy a relaxing chat while savoring seasonal seafood. We also serve Kumamoto specialties such as mustard lotus root and horse meat sashimi.

Recommended dishes
Regional cuisine course meal 7,700 yen
Kuroshio course meal 11,000 yen
Toyama course meal 6,600 yen

Suizenji

2-5-28, Suizenji, Chuo-ku, Kumamoto City
TEL: 096-383-4137
Hours: 11:30-14:30 17:00-22:00
Capacity: 200 (private rooms available)
Parking available
Unscheduled closing day once a week

60 GRILL de GYAN



The Yoshoku (Western-style food) restaurant is housed in a renovated house about 100 years old. Customers can enjoy horse meat sashimi and hamburger steak.

Recommended dishes
GYAN's signature dish garlicky grilled tuna 1,400 yen
Chicken in Guernsey sauce & garlic toast 1,500 yen
Horse meat hamburger steak 1,200 yen

F-2

5-21, Tsuboi-machi, Chuo-ku, Kumamoto City
TEL: 096-352-8821
Hours: 11:30-14:00
17:30-22:30 (LO 21:30)
[Sat & Sun & public holidays -23:00 (LO 22:00)]
Capacity: 100 No parking
Irregular holidays

Regional Cuisine

Kumamoto Area, Tajiri, Horse Meat, Maeshi, Amakusa Daio, Karahi, Bagna Cauda, Roast Chicken

Benefits you will receive by presenting this booklet.

Wheelchair accessible
Smoking seats available

61 tutti

The Italian restaurant is committed to using local ingredients such as organic vegetables from contract farms, Amakusa Daio chicken, and red beef.

3F, Central Building, 2-29, Ansei-machi, Chuo-ku, Kumamoto City
TEL: 096-323-6068
Hours: 18:00-24:00 (LO 23:00)
Capacity: 61 (semi-private rooms)
No parking
Closed on Mondays

Recommended dishes

Mr. I's roast red beef 1,980-2,750 yen /100g
Roast Amakusa Daio chicken 858-968 yen /100g
Bagna Cauda 1,518 yen



G-3

Booking is essential.
Wheelchair accessible

62 Steak KAMON 鉄板焼 ステーキ 佳紋

In addition to our meticulously chosen steaks, the fresh abalone from Amakusa served with a special sauce is exquisite. We offer Japanese-style rooms with sunken kotatsu, perfect for family gatherings and parties. Reservations are required for regional cuisine.

Basement, Stella Kamitori Building, 3-15, Kamitori-cho, Chuo-ku, Kumamoto City
TEL: 096-351-4129
Hours: 11:30-15:00 (LO 14:00) 17:30-23:00 (LO 21:00)
Capacity: 48 (private rooms available)
No parking Irregular holidays



Complimentary glass of drink

Recommended dishes (lunch)
Fillet steak lunch 2,800 yen
Steak & Pilaf 2,690 yen
Omakase lunch 5,280 yen

Recommended dishes (dinner)
Abalone & Steak course 9,350 yen
Dinner course 7,480-16,500 yen

G-2

Booking is essential.
Wheelchair-friendly (tatami tables only)

63 Dining Café Sai ダイニングカフェ 彩

Enjoy original creations that highlight local ingredients in a perfect spot with a panorama of Kumamoto Castle.

14F, Kumamoto City Hall, Totori Honmachi, Chuo-ku, Kumamoto City
TEL: 096-328-2954
Hours: 11:00-15:00
17:30-22:00*Reservation required
Capacity: 100 (private rooms available)
No parking Closed on Sundays

Recommended dishes

Lunch of the day 1,150 yen
East-meets-West Meal, from 3,500 yen



D-2

Wheelchair accessible

64 PRIMADONNA



No charge(except course menu). Free 30 min unlimited drinks extension.

Established in 1997. The restaurant is frequented by locals and those in the restaurant trade working the late shift.

Recommended dishes

Yukhoe of Kumamoto horse meat 1,310 yen
Higo Akaushi Beef sirloin steak (200g) 3,680 yen
Oaso chicken stewed in lemon cream sauce 1,560 yen

 **D-4**

1F, Shanse Shinagawa, 11-18, Hanabata-cho, Chuo-ku, Kumamoto City
TEL: 096-324-2989
Hours: 17:00-3:00(LO 2:30) [Sun & public holidays] 17:00-24:00(LO 23:30)
Capacity: 75 (private rooms available)
No parking Closed on Mondays



65 GRILL Suematsu グリル末松



We serve teppan-grilled Kumamoto vegetables. We look forward to serving you delicious Kumamoto meat and carefully selected wines.

Recommended dishes

Kumamoto Otsuka Beef T-Bone Steak (18 yen per gram) 12,660 yen per 700g
Aka Ushi beef rump (¥22 per gram)
Kumamoto Vegetable Grill 1,030 yen

 Please call to enquire 11:30-15:00 **G-4**

1F, Business Hotel Shuttle, 4-1, Chuogai, Chuo-ku, Kumamoto City
TEL: 096-312-2929
Hours: Lunch 11:30-15:00 Dinner 17:00-23:00
Capacity: 30 No parking Irregular holidays



66 German Haus ゲルマンハウス



Enjoy luxury in a casual way. Savor dishes carefully made with special ingredients in an elegant German ambiance.

Recommended dishes

Multi-Course Meal Berlin (lunch) 2,900 yen
Multi-Course Meal German (dinner) 3,600 yen
Kuroge Wagyu Fillet Steak Course 8,900 yen

6-38-16, Suizenji, Chuo-ku, Kumamoto City
TEL: 096-382-2555
Hours: Lunch 11:00 - 15:00 Dinner 17:00 - 21:00
Seats 26 (private rooms available)
Parking available
Closed on Wednesdays and 2nd and 4th Thursdays

 Suizenji



67 Whiskey CAT ウイスキーキャット



The orthodox bar serves Irish stout and draft Guinness. Barreled whiskey, single malt Scotch whiskey, cocktails and mojitos are also popular.

Recommended dishes

Guinness (one pint) 1,200 yen
Fruit and champagne cocktail 1,800 yen
Mojito 1,500 yen

C-4

10-19, Hanabata-cho, Chuo-ku, Kumamoto City
TEL: 096-356-2818
Hours: 19:00-2:00 [Fri & Sat] Open until 3:00
Capacity: 11 No parking Closed on Irregular holidays



*LO(Last Order)

68 White Roman ホワイトロマン

Fabulous staff await at the elegant and calm bar.Go ahead and open the door.

Recommended dishes

60 min of unlimited drinks 5,000 yen
(Includes whiskey, Highball, brandy, shochu, and karaoke)

6F, Jasmac Building, 13-3, Hanabata-cho, Chuo-ku, Kumamoto City
TEL: 096-353-1500
Hours: 20:00-1:00
Capacity: 25 No parking Closed on Sundays and public holidays



D-4

69 Hostess bar Sansui スナックさんすい

Cheerful female staff are waiting to serve customers in the bar with a chilled ambiance. Single customers are welcome!

Recommended dishes

90 min of unlimited drinks 4,000 yen
3,500 yen per customer if there are more than two.

5F, TM-13 Building, 3-4, Shinshigai, Chuo-ku, Kumamoto City
TEL: [12:00-17:00]096-325-5235 [17:00-25:00]096-325-2268
Hours: 19:00-1:00
Capacity: 100 (private rooms)
No parking Open all year round



E-5

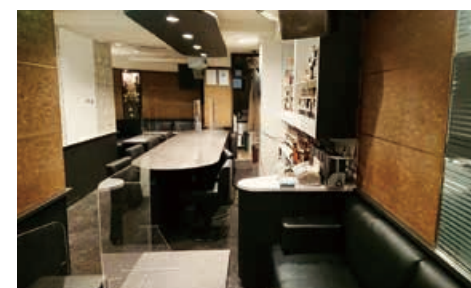
70 Misty ミスティー

Have an enjoyable time with members of staff that have beautiful smiles in the chic and relaxing setting.

Recommended dishes

Unlimited drinks (120 min) 4,400 yen

3F, Dai 3 RIKI Building, 13-49, Hanabata-machi, Chuo-ku, Kumamoto City
TEL: 096-351-2177
Hours: 19:00-1:00
Capacity: 30 No parking Closed on Sundays and public holidays



 **E-4**

71 voyager

At our hideaway bar, you can enjoy over 50 craft beers from around the world and authentic American-style smash burgers.

おすすめメニュー

Kuhonji Burger(double) 770 yen
BIG Kuhonji Burger 1,760 yen
Sweet and spicy pecans 440 yen

1B, River Port 9, 1-1-26, Kuhonji, Chuo-ku, Kumamoto City
TEL: 096-200-7796
Hours: [Sun-Wed]18:00-23:00 [Fri & Sat] 18:00-24:00
Capacity: 20
No parking Closed on Thursday



Free extra cheese on burgers

G-4

72 FOOD & SWEETS CAFÉ FREEDOM SMILE

A-5



We serve trendy Korean food and desserts, as well as our signature fried chicken and a wide variety of beverages. We hope you enjoy the restaurant's stylish neutral decor consisting of mortar, wood, white tones, and furnishings, where music and video play in the background.

1-3-48, Tasaki, Nishi-ku, Kumamoto City
TEL: 096-200-5786
Hours: 11:00-19:00 (LO18:40)
Capacity: 15
Parking available
Closed on Sundays and Mondays



Recommended dishes

Cheese Dog made with milk, rice flour, and eggs sourced in Kumamoto, 550 yen
Uma-Shio Karaage (plain, yangnyeom, chilli mayo, or chopped scallions) 500 yen
Smoothie made with milk sourced in the Prefecture, 450 yen

Tourism Info

Scan the QR codes for more info



Kumamoto Sightseeing Guidebook Kumabon

It includes Kumamoto Castle and various other sights in Kumamoto!
*Japanese language only



(full version)



Hands-on Kumamoto Programmes

Find out about fun programmes such as unique Kumamoto experiences and interaction with the locals!



(taster)

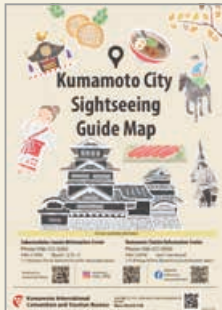


Kumamoto Foodie BOOK

Get info on restaurants, souvenir shops and accommodation in Kumamoto.



(food)



Kumamoto Sightseeing Map

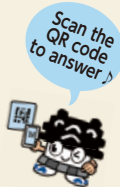
The map displays Kumamoto's central area, including the station and Suizenji, as well as tourist facilities and accommodations.



(map)

City of Kumamoto Tourism Survey is underway

We are conducting a web survey to improve tourism in Kumamoto City and to help us prepare sightseeing projects in the future. (Time required : about 2 minutes) Amazon gift card (E-mail type) worth 500 yen will be given to 10 people chosen at random every month who have completed this questionnaire.



E-2

Eat Kumamoto's local foods!
And drink as well!
It's a landmark of foods and amusement.



熊本屋台村

KUMAMOTO FOOD STALL VILLAGE



A new landmark of foods and amusement OPENS! It includes many restaurants representing Kumamoto's local foods and multipurpose space "SDGs square".



In the middle of Kumamoto Food Stall Village, you can find a small street called, "Kaminoyoko-street", that is a Japanese traditional Yokocho-style (many small restaurants in the side of street). Every restaurant has counter seats, so you can feel Japanese retro atmosphere easily.



Please feel free to stop by at vending machine for 27 shochu breweries and try them!

Some of the food stalls



Beer Stand

SANJI

We serve Premium Malts using 3 special pouring techniques within 3 days of shipment from Suntory's Kumamoto factory. Savor the divine head!



Natural clams and seasonal tempura

Nagomi-An

We offer freshly fried tempura made with seasonal, locally sourced ingredients, as well as exquisite, grilled Asian hard clams.



Robata Italian wine

Il For

We offer Italian-style fireside cooking with wild trout from Yamato, pork from Kikuchi, and wild game from Kumamoto Prefecture. We highly recommend trying the rotolino, baked in a dedicated pizza oven.



2-22, Jyoto-machi, Chuo-ku, Kumamoto City
Hours / 12:00-23:30
Closed / 1st and 3rd Wednesday

*Village holidays are subject to change. Village holiday schedules and restaurant hours are posted on their respective Instagram accounts.

Get the Kumamoto City Tram 18 min from Kumamoto Eki-Mae
Alight at Torichosuji 24 min from Kengunmachi
and walk 1 min 11 min from Shin-Suizenji Eki



■ Lunch time available

Number	Store Name	TEL	Lunch Time	Page
1	Kumamoto Ramen KOMURASAKI	096- 325-8972	11:00-16:00 (LO15:30) Closed/End of the year and New Year holidays.	4P
2	Kumamoto Ramen RAMEN AKAGUMI	096- 325-8766	11:00-23:30(LO23:00) Closed/Open all year round	4P
3	Kumamoto Ramen Kumamoto Tonkotsu DEN	096- 354-9822	[Monday to Saturday] 11:30-3:00 (LO2:30) [Sunday / Holiday] 11:30-1:00 (LO0:30) Closed/New Year's Day	4P
4	Kumamoto Ramen Koku Ryu Kou	096- 353-0929	11:00-14:00 (LO13:30) Closed/Sunday	4P
5	Kumamoto Ramen Kumamoto Ramen Kokutei	096- 352-1648	10:30-21:00 (LO20:30) Closed/Please refer to Home page	5P
6	Kumamoto Ramen OCEAN'S SEVEN	090- 8221-6659	[Weekdays] 11:00-16:00 (LO15:45) [Sat, Sun & Holidays] 11:00-16:30 (LO16:15) Closed/Closed when the zoo is closed.	5P
7	Kumamoto Ramen Kumamoto Ramen TONBI	080- 3221-0648	11:30-15:00 Closed/Monday	5P
8	Kumamoto Ramen Butasoba Jyugoya	—	11:00-17:00 Closed/Open all year round	5P
9	Taipeien Kourantei	096- 352-7177 Reservation phone	11:00-17:00 Closed/Open all year round	6P
10	Taipeien Chinese cuisine Enen	096- 353-3913	11:30-14:30(LO14:00) Closed/Saturday, Sunday and public holidays, Irregular holidays	6P
11	Taipeien Chinese Restaurant Marumi	096- 272-4949	11:30-15:00 Closed/Monday (closed on Tuesday if Monday is a public holiday)	6P
15	Horse Meat BATAN GYUTAN	080- 3746-3779	11:00-16:00 (LO15:30) Closed/Irregular holidays	7P
16	Horse Meat KUMAMOTO HORMONE (Innards)	096- 351-0330	11:30-14:00 Closed/Sunday *No under-age customers.	7P
18	Aka Ushi Beef Guruman Sannenzaka	096- 321-6200	11:00-17:00 Closed/Open all year round	8P
20	Aka Ushi Beef Akaushi dining yoka-yoka SAKURAMACHI kumamoto	096- 288-5029	11:00-22:00 (LO21:00) Closed/No scheduled holidays (closed when the building is closed)	8P
21	Aka Ushi Beef Akaushi dining yoka-yoka teppan&grill	096- 324-7227	11:00-22:00 (LO21:00) Closed/Open all year round *Subject to temporary closing days	9P
23	Local food Ajidokoro OGAWA	096- 353-2393	11:45-13:30 Closed/Wednesday, Saturday, Sunday, public holidays	9P
25	Local food AOYAGI	096- 353-0311	11:30-14:00 (LO13:30) Closed/Irregular holidays	10P
27	Local food Yamami Chaya	096- 327-9293	11:00-18:00 Closed/End of year	10P
31	Izakaya Japanese-style bar Ichinosoko	096- 325-3911	11:30~15:00 (LO14:00) Closed/Open all year round	11P
33	Izakaya Japanese-style bar Sosakuwasai KASHO	096- 351-9400	11:30~15:00 (LO14:00) Closed/Tuesday	12P
41	Izakaya Japanese-style bar Parlour Hibari	096- 322-1212	11:30-24:00 (LO 23:00) Closed/Open all year round	14P
43	Izakaya Japanese-style bar Tachi sushi	096- 354-9999	11:30-14:00 Closed/Irregular holidays	14P
46	Izakaya Japanese-style bar NENKINSAKABA	096- 274-8181	12:00-23:00 Closed/Closed when the village is closed	15P

Number	Store Name	TEL	Lunch Time	Page
49	Japanese food ENISHI	096- 351-0824	11:30-15:00 (LO14:00) Closed/Tuesday	16P
53	Japanese food Amakusa kaimaru	096- 319-5073	11:00-18:00 Closed/12/31	17P
54	Japanese food Nakamura	096- 351-0535	11:30-15:00 (LO14:30) Closed/Closed on Wed, the end of the year, New Year's holiday	17P
55	Japanese food Unagiya Masakazu	096- 346-2224	11:00-15:00 (LO14:00) Closed/Wednesday (open if Wednesday is a holiday)	17P
56	Japanese food Japanese Restaurant Haraguchi	096- 383-1931	11:30-22:00 ※Reservation required Closed/Open all year round (call to confirm)	17P
57	Japanese food Japanese Restaurant Kaminomizu	096- 237-7507	11:30-14:00 (LO) Closed/Irregular holidays	18P
58	Japanese food Takikawa	096- 387-0300	11:30-14:00(LO) ※Reservation required Closed/Irregular holidays	18P
59	Japanese food TORAYA	096- 383-4137	11:30-14:30 Closed/Unscheduled closing day once a week	18P
60	Western food GRILL de GYAN	096- 352-8821	11:30-14:00 Closed/Irregular holidays	18P
62	Western food Steak KAMON	096- 351-4129	11:30-15:00 (LO14:00) Closed/Irregular holidays	19P
63	Western food Dining Café Sai	096- 328-2954	11:00-15:00 Closed/Sunday	19P
65	Western food GRILL Suematsu	096- 312-2929	11:30-15:00 (LO14:30) Closed/Irregular holidays	20P
66	Western food German Haus	096- 382-2555	11:00-15:00 (LO14:00) Closed/Wednesday, 2nd and 4th Thursday	20P
72	Sweets FOOD&SWEETS CAFÉ FREEDOM SMILE	096- 200-5786	11:00-19:00 (LO18:40) Closed/Sunday, Monday	22P

■ for Vegetarian

Number	Store Name	Number	Store Name
25	AOYAGI ※Advance notice is required	56	Japanese Restaurant Haraguchi ※Reservation required
29	Syaraku ※Set meals only (must be reserved three days in advance)	57	Japanese Restaurant Kaminomizu ※Reservation required
34	FUKUYAMA	61	tutti
53	Amakusa kaimaru	63	Dining Café Sai

■ for Muslim

Number	Store Name	Number	Store Name
25	AOYAGI ※Advance notice is required	29	Syaraku ※Set meals only (must be reserved three days in advance)
26	Higo no Jinya ※Seat meals only (from two diners, must be reserved three days in advance)	35	Uogashi Banyan ※Seat meals only (from two diners, must be reserved three days in advance)

※LO (Last Order)

1 Ikinariya Watanabe A-3

いきなりやわたなべ



Best by date: They keep for two months when frozen. Please consume immediately when purchased at room temperature.

The shop uses carefully selected sweet potatoes grown in Kumamoto Prefecture in the foothills of Mt. Aso. It specializes in Kumamoto's famous Ikinari dango (dumplings), handmade the old-fashioned way. The shop has long been patronized by local and national customers and is popular with the media and entertainment industry.

Inside Johsaien Sakura no Koji, 1-1-2, Ninomaru, Chuo-ku, Kumamoto City
TEL: 096-346-0247
Hours: 9:00-18:00
Paid parking available at Johsaien.
Closed at the end of the year.

**Recommended**

Kumamotojo Set
(an assortment of 8)

2 Kumamoto Castle Kobai-an A-3

熊本城香梅庵



Located in Sakura-no-Baba Johsaien at the foot of Kumamoto Castle, the store offers a variety of Japanese and Western confections that bring Kumamoto's history and culture to life, including Kumamoto's famous Homare no Jindaiko and Musha Gaeshi. Please stop by when you visit Kumamoto Castle.

Inside Johsaien Sakura no Koji, 1-1-2, Ninomaru, Chuo-ku, Kumamoto City
TEL: 096-288-0039
Hours: 9:00-18:00
Paid parking available at Johsaien.
Open all year round

**Recommended**

Happy Jindaiko Kumamon 1,394 yen
Musha Gaeshi, 10pc. 1,836 yen
Soft Serve Jindaiko Ice Cream Take-out 432 yen, eat-in 440 yen

5 Mori Karashirenkon A-4

森からし蓮根 有限会社



The shop is the original maker of Kumamoto's famous karashi renkon. The crispy texture and the sinus-clearing heat are superb. Enjoy the authentic and original karashi renkon.

2-12-32, Shin-machi, Chuo-ku, Kumamoto City
TEL: 096-351-0001
Hours: 8:00-17:00
Parking available
Irregular holidays

Recommended

Karashi renkon (medium) 1,080 yen
Karashi renkon chips
(a box of 5 packets) 1,080 yen

**6 Higo-Zogan Mitsusuke** A-3

肥後象嵌 光助



Higo-Zogan is Kumamoto's traditional craft with a history, spanning over 400 years, as is the construction of Kumamoto Castle. Zogan was originally used for tsuba and is now widely used for accessories and stationery. The shop is also popular for its hands-on Zogan crafting experience.

3-2-1, Shin-machi, Chuo-ku, Kumamoto City
TEL: 096-324-4488
Hours: 9:00-17:00
(Sat & Sun & public holidays) 10:00-16:00
Parking available
Closed at the end of the year and New Year holidays.

Recommended

Kumamon's badge with strap 7,700 yen
Pendant 4,400 yen
Earrings 11,000 yen

**3 Kumamoto Shunsaikan Sakura LIQUOR / Kuma BAR** B-5

くまもと旬彩館さくら LIQUOR / くま BAR



The liquor store offers a wide selection of Kumamoto's liquors and brews, including Kuma Shochu and locally produced sake, and Kuma BAR adjoining the store serves them by the glass.

Sakura Machi Kumamoto, B1, 3-10, Sakuramachi, Chuo-ku, Kumamoto City
Tel: 096-300-8111
Hours: 10:00 - 21:00
Parking: on-site parking and paid parking available
Open all year round

Recommended

Kamo no Mai 25° 550 yen
Sake tasting 660 yen
Kuma Shochu tasting 550 yen

**4 Downtown Art Company Asakusaya** D-5

ダウNTOWNアートカンパニー 浅草屋



The shop sells supplies for festivals. It also sells a wide range of Japanese sundries and souvenirs made in Japan. A short walk from the Shimotori Shopping Arcade!!

1F E, Shower Valley Building, 2-7-32, Shimo-tori Street, Chuo-ku, Kumamoto City
TEL 096-354-1944
Hours: 10:00-19:00
No parking
Closed on Tuesdays

Recommended

Kanji Kumamoto T-shirt (white) 1,200 yen
Kumamon Kumamoto hanging scroll 1,000 yen
Original wooden tag (small) 1,080 yen

**7 Kawakami Saketen** F-2

川上酒店



Some Kuma shochu and Japanese sake are available for tasting

The shop carries Kuma shochu from 26 distilleries. Some are available for free tasting. It also sells a variety of saké and wines produced in Kumamoto.

2-3, Yorozu-machi, Chuo-ku, Kumamoto City
TEL: 096-326-1568
Hours: 9:00-19:00
Parking available
Irregular holidays

Recommended

Kikuka Chardonnay Seseragi 2,700 yen
Kuma shochu from 1,200 yen
Saké produced in Kumamoto from 1,400 yen

**8 Choju-an Kumamoto Station** C-4

長寿庵 熊本駅店



Kumamoto Station, the gateway to Kumamoto, is home to a famous Ikinari dango store! Try our Ikinari dango as a gift or a snack for your family. We also deliver to other regions of Japan.

Kumamoto Station Higo Yokamon Ichiba, 3-15-30, Kasuga, Nishi-ku, Kumamoto City
TEL: 096-359-4647
Hours: 9:00-20:00
Parking available
(Affiliated parking lot)
Open all year round

Recommended

Ikinari dango 160 yen each
Grilled Ikinari dango 250 yen
Dorayaki 150 yen



9 Suganoya Kumamoto Station - horse meat specialist C-4

馬肉専門店 菅乃屋 熊本駅店



The souvenir shop specializes in "horse meat sashimi and products." It carries a selection of popular, high-quality horse meat sashimi. Please stop by when you come to Kumamoto Station.

Kumamoto Station Higo Yokamon Ichiba, 3-15-30, Kasuga, Nishi-ku, Kumamoto City

TEL: 096-355-2877

Hours: 9:00-20:00

Parking available (Affiliated parking lot)

Open all year round

Recommended

Fresh horse sashimi "Fatty" (100g) 4,200 yen

Fresh horse sashimi "Premium Marbled" (100g) 3,200 yen

Fresh horse loin sashimi (200g) 3,600 yen



11 Antagata Dokosa Kumamoto Station C-4

あんたがたどこそ 熊本駅店



5% off *Exclusions apply

Each confection is handmade by our confectioners. We offer a variety of confections, including the very popular "Higo Daiko," "Goma Daiko," bursting with the flavor of sesame seeds, and the old-fashioned "Suzume no Tamago."

Kumamoto Station Higo Yokamon Ichiba, 3-15-30, Kasuga, Nishi-ku, Kumamoto City

TEL: 096-288-5801

Hours: 9:00-20:00

Parking available (Affiliated parking lot)

Open all year round

Recommended

Higo Daiko, 5pc., Kumamon packet 756 yen

Suzume no Chocolate Tamago, 6pc. 540 yen

Kuromame Rakka, 3pc. 421 yen

10 Okashi no Kobai Kumamoto Station C-4

お菓子の香梅 熊本駅店



The shop sells Japanese confectionaries that convey Kumamoto's history and culture, including "Homare no Jindaiko" and "Mushagaeshi." At the sales demonstration, visitors can taste the freshly baked Marukintsuba prepared by artisans.

Kumamoto Station Higo Yokamon Ichiba, 3-15-30, Kasuga, Nishi-ku, Kumamoto City

TEL: 096-325-6777

Hours: 9:00-20:00

Parking available (Affiliated parking lot)

Open all year round

Recommended

Happy Jindaiko Kumamon 1,394 yen

Higo Tsuba (Sanmenyaki Marukintsuba), a set of 8 891 yen

Soft Serve Jindaiko Ice Cream (takeout only) 432 yen



12 Hanamarudo B-5

華まる堂



Sweet potato grown in Kumamoto is wrapped with sticky dough.

Sakuramachi Kumamoto Bus Terminal Concourse, 3-10, Sakuramachi, Chuo-ku, Kumamoto City

TEL: 096-300-8116

Hours: 9:00 - 18:00

Parking available (on-site/tariffs apply)

Open all year round

Recommended

Ikinari Dango (dark bean jam) 170 yen

Chilled Ikinari Dango (a set of 4) 730 yen

13 Sonoya Suizenji

煎匠 そのや



Complimentary Kumamon crackers (2pc.) with purchase

We use eggs from the local Cocco Farm in Kumamoto. We are dedicated to hand-baking, and we demonstrate and sell our signature product, "Higo Mondo," one by one at our storefront. Please enjoy the freshly baked taste.

5-13, Suizenji Koen, Chuo-ku, Kumamoto City

TEL: 096-380-6175

Hours: 10:00 - 16:00

No parking

Closed on Wednesdays & Sundays

Recommended

Higo Mondo, 8pc. 520 yen

Higo Mondo, 8pc. individually wrapped 640 yen

Higo Mondo, 16pc. individually wrapped 1,180 yen

15 Roadside Station Suika-no-Sato Ueki Ueki 2

道の駅 すいかの里植木



The roadside station is in Ueki-machi, famous for its water melons. It sells a variety of local products.

160-1, Iwano, Ueki-machi, Kita-ku, Kumamoto City

TEL: 096-272-2333

Hours: 9:00-18:30

Parking available

Closed every 3rd Thursday of the month

(Close the following non-holiday)

Recommended

Suika Hand-Baked Doughnut, 1pc. 180 yen

A 500ml bottle of Water Melon-flavored Nigori Saké 1,800 yen

Water melon (seasonal), market price.



14 Kumamoto Winery Kita-ku

熊本ワイナリー



The winery has enjoyed an excellent reputation in wine competitions. The shop sells a range of limited edition wines and cheese.

168-17, Izumi-machi, Kita-ku, Kumamoto City

TEL: 096-275-2277

Hours: 10:00-17:00

(Closed 12:00-13:00 during weekdays)

Parking available

Closed on Wednesdays.

Recommended

Kikuka Chardonnay 2,913 yen

From the vault 1,500 yen onwards

Kyoho no Shizuku 1,980 yen



16 Fudo Chikuwa Honpo Minami-ku

不動ちくわ本舗



This long-established shop has been in business for 165 years. In addition to its signature "Daifudo" (chikuwa on a bamboo skewer), the store offers tempura, karashi renkon (lotus root filled with mustard), and other items, making it the perfect place to pick up Kumamoto souvenirs.

505, Shimomiyajii, Jonanmachi, Minami-ku, Kumamoto City

TEL: 0964-28-2038

Hours: 8:30-18:00 (varies according to seasons)

Parking available

Open all year round

Recommended

Karashi Renkon from 600 yen -

Daifudo chikuwa on skewer 340 yen

17 Kiyomasa Seika Kumamoto Station C-4

清正製菓 熊本駅店



Hinokuni Kumamotojo is a bun with chestnut and cherry blossom fillings, created through a collaboration between the manga ONE PIECE and Kiyomasa Seika. It is exclusively sold in Kumamoto Prefecture to aid the Kumamoto Earthquake Reconstruction Project! If you come across it, please buy one. The second edition, Luffy's Icho Pie, is also on sale to much acclaim.

Kumamoto Station Higo Yokamon Ichiba, 3-15-30, Kasuga, Nishi-ku, Kumamoto City
TEL: 096-355-0303
Hours: 9:00-20:00 Open all year round
Parking available(Affiliated parking lot)

Recommended

Hinokuni Kumamotojo box of 8 1,000 yen
Luffy's Icho Pie box of 8 1,000 yen
Gekka no Kumamotojo Kumamon Ver. 15 pc. 1,400 yen

18 Fuji Bambi Kumamoto Station C-4

フジバンビ 熊本駅店



Brown Sugar Doughnut Stick is Kumamoto's signature confection! We are committed to using domestically produced flour to create familiar confections that will bring a smile to your face. Please stop by when you visit Kumamoto Station.

Kumamoto Station Higo Yokamon Ichiba, 3-15-30, Kasuga, Nishi-ku, Kumamoto City
TEL: 096-359-5910
Hours: 9:00-20:00
Parking available(Affiliated parking lot)
Open all year round



Recommended

Brown Sugar Doughnut Stick, 20pc. 1,004 yen
Brown Sugar Doughnut Stick Hinokuni, 16pc. Packet 907 yen
Aso Jersey Milk Doughnut Stick, 20pc. 1,000 yen

19 Fukudaya Kumamoto Waguri-an Kumamoto Station C-4

福田屋 熊本和栗庵 熊本駅店



Fukudaya Kumamoto Waguri-an (JR Kumamoto Station) offers a variety of confections made exclusively from locally-grown Japanese chestnuts. Kumamoto is a leading producer of high-quality chestnuts in Japan. We handle everything from sourcing the chestnuts to processing the paste and making the confections. We look forward to serving you with confections made from Kumamoto's Japanese chestnuts, such as "Kuri Senri," a Grand Prix winner in the 2018 "Nippon Zenkoku Gotochi Oyatsu Ranking" and our very popular "Kurizuki."

Kumamoto Station Higo Yokamon Ichiba, 3-15-30, Kasuga, Nishi-ku, Kumamoto City
TEL: 0120-014-999(Fukudaya main store) / Weekdays 9:00 - 17:00
Hours: 9:00-20:00
Parking available
(Affiliated parking lot)
Open all year round

Recommended

Kuri Senri, 5pc. 675 yen
Kurizuki, 6pc. 1,260 yen

1 Wa Collection Mito A-1

和 collection 美都



The new shop opened in January 2023 in Sakura no Baba Josaien. The shop rents kimono and yukata to tourists. Customers who rent a complete set of kimono or yukata, including fitting, will receive a complimentary admission ticket to Suizenji Jojuen Garden, a traditional Japanese drawingstring purse, and other gifts.

Josaien Sakuranokoji, 1-1-2, Ninomaru, Chuo-ku, Kumamoto City
TEL: 096-362-6439
Hours: 9:15 - 17:30
Paid parking is available at Josaien
Open all year round



Recommended

Kimono rental(Oct - May) 4,378 yen
Yukata rental(Jun - Sep) 4,378 yen

3 Kichiji-en Resort Farm Ueki 3

観光農園 吉次園



You can enjoy picking fruits such as strawberries, grapes, apples, mandarin oranges, and pears throughout the year. Soft-serve ice cream and parfaits made with abundant fruits are also very popular. The farm is easily accessible, only 25 minutes by car from the center of Kumamoto!

556-1, Kitome, Uekimachi, Kita-ku, Kumamoto City
TEL: 096-273-2544
Hours: 10:00 - 17:00
(last admission 16:00)
Parking available
Irregular holidays



Recommended
All-you-can-eat strawberry picking from 1,400 yen (seasonal)
All-you-can-eat grape picking from 1,080 yen (depending on variety)
Apple picking - take-home, 1kg 670 yen

2 Yuhoen Fruit Land Nishi-ku

優峰園 フルーツランド



Our popular activities include a seasonal fruit picking experience and, in the summer, a rainbow trout fishing experience taking advantage of Mt. Kinbo's spring water and somen nagashi.

1144, Kawachimachitake, Nishi-ku, Kumamoto City
TEL: 096-288-1545

Hours: 9:00-17:00 Parking available
Closed [Fruit garden] Mondays(Oct-Nov)
Wednesdays(Dec-Sep)

[Restaurant] Wednesdays



Recommended

All-you-can-eat fruit picking
*The price varies depending on the types of fruit.
Please enquire for more information.
Rainbow trout fishing experience, one catch 650 yen
Somen nagashi from 600 yen per person

4 Fun earth Suizenji Ezuko Park



Explore Kumamoto's oasis, Lake Ezu, by stand-up paddleboarding or canoeing. This freshwater lake is absolutely stunning and perfect for a day out in nature. Instructors will provide you with detailed instructions in areas where there is no current. Beginners can safely experience stand-up paddleboarding or canoeing with stable boards and canoes. Enjoy the extraordinary experience of gliding on water.

*By reservation only Parking available
TEL: 090-7158-5888 Irregular holidays
Hours: 9:30 - 16:00

Recommended

Stand-up paddleboarding taster 7,000 yen
Canoeing (kayaking) taster 7,000 yen
eMTB taster 8,000 yen

Hot Spring Baths in the City of Kumamoto

Ueki Onsen Association 096-274-6830

Taxi

Kumamoto taxi 0120-0120-86

Kumamoto taxi (Tourist phone number) 096-379-8182

Kumamoto-kotsu taxi 0120-369-686

Higo-daiichi kotsu 096-354-2222

Naka Kyushu Izumi Taxi 096-365-0611

Car rental

Kumamoto Nissan Rent-a-Car 096-324-6363

TOYOTA Rent-a-Car 096-388-7171



A Kumamoto Castle Honmaru Rest Area D-3

熊本城本丸お休み処

The rest area is located directly in front of the castle keep. It offers souvenirs of your visit, such as the "Gojo-in" (castle stamp) and products exclusive to Kumamoto Castle.



Busho stamp Inner Citadel's exclusive Gojo-in stamp

1-1, Honmaru, Chuo-ku, Kumamoto City (inner citadel)
TEL: 096-327-8927
Hours: 9:00 - 16:30
Parking available (Ninomaru Parking lot, fee paying)
Closed on December 30 and 31
Transport: Kumamoto Castle / Ninomaru Parking bus stop



B Kumamoto Castle Ninomaru Rest Area C-3

熊本城二の丸お休み処

In addition to a model of Kumamoto Castle and photo panel displays, there is a donation box for Kumamoto Castle disaster relief. Visitors can also view a video about the restoration work.



Kumamoto Castle stamp

2-3, Ninomaru, Chuo-ku, Kumamoto City (Ninomaru Parking area)
TEL: 096-321-6150
Hours: 9:00 - 17:00
Parking available (Ninomaru Parking lot, fee paying)
Closed on December 30 and 31
Transport: Kumamoto Castle / Ninomaru Parking bus stop

Busho seal is available for purchase.

C Kumamoto Zoo Shop Higashi-ku

熊本市動植物園売店

The store offers various products to commemorate your visit, including red panda goods popular with children and original products from Kumamoto City Zoological and Botanical Gardens.



5-14-2, Kengun, Higashi-ku, Kumamoto City
TEL: 096-288-7530
Hours: 9:00 - 16:45 (The zoo closes at 17:00)
Parking is free on weekdays only.
Closed on Mondays, but the shop is open on the 4th Monday of the month and closes on Tuesday (or the following non-holiday weekday if Tuesday is a holiday)
Transport: Dobutsuen-mae or Doshokubutsuen Nishiguchi bus stop, and Doshokubutsuen Iriguchi tram stop.



D Kumamoto Museum Shop B-2

熊本博物館ミュージアムショップ

The shop offers variety of items that excite curiosity such as original designed postcards related the museum's exhibit, stationary, experiment and craft kits.



3-2, Furukyo-machi, Chuo-ku, Kumamoto City TEL: 096-273-7840
Hours: 9:00 - 17:00 (Last admission is 16:30)
There is no parking, so please use the Sanno-maru Parking lot (paid)
Closed on Mondays (Closed the following day if Monday is a public holiday), end of the year and New Year holidays (Dec 29 - Jan 3), and for maintenance work.
Transport: Hakubutsukan/Kyu Hosokawa Gyobu-tei bus stop, Sugidomo tram stop.



E Yuusuitei Suizenji Suizenji Higo Hosokawa cultural center Suizenji

水前寺肥後細川文化発信拠点 湧水亭

This facility offers many opportunities for visitors to enjoy exhibits of works and tools associated with the culture of the Higo Hosokawa family, who served as lords of Kumamoto for many years after the Kato family was attained, as well as sales of products made from edible gynura.



6-24, Suizenji Koen, Chuo-ku, Kumamoto (within Gentakuji parking lot) (Scheduled to move in March 2024)
TEL: 080-3498-8268
Hours: 9:00 - 16:30
There is no private parking, so please use parking lots nearby (for a fee)
Closed on Wed(if holiday, Thursday is closed), End of the year will be closed
Transport: Bus stop: Kokubu, Suizenji Koen-mae Tram: Kokubu, Suizenji Park

YAHOO! Shopping JAPAN Kumamoto Castle Shop



We have a variety of products only available in Kumamoto, including original Kumamoto Castle products and Kumamon goods.
A portion of the proceeds from the store will be donated to the Kumamoto Castle Disaster Relief Fund.



Yahoo Shopping Kumamoto Castle Shop Search 一般財団法人 熊本国際観光コンベンション協会 Kumamoto International Convention & Tourism Bureau

No.	Hotel/Ryokan	Address	MAP	TEL	Number of rooms	Room type/rate	Parking lot rates
Central City	1	KKR HOTEL KUMAMOTO KKRホテル熊本 City Hotel	D2	096-355-0121	54	*Call for rates	1,000yen
	2	ARK HOTEL KUMAMOTOJOMAE アーケホテル熊本城前 Business Hotel	E2	096-351-2222	222	*Call for rates	900yen Multi-story parking, vehicle-type restrictions apply
	3	& and COMFY HOTEL Kumamotojo view アンドコンフィホテル熊本城ビュー Business Hotel	E3	096-311-7070	98	*Call for rates	Information provided at the shared parking lot (fee paying)
	4	KUMAMOTO HOTEL CASTLE 熊本ホテルキャッスル City Hotel	E3	096-326-3311	150	*Call for rates	1,000yen
	5	Kumamoto Wasuki Tsukasakan 熊本和数寄奇館 City Hotel	E3	096-352-5101	59	T 18,000~ W 12,000~ 和 18,000~ *The prices change by the number of people in the party.	Information provided at the shared parking lot
	6	hotel nikko kumamoto ホテル日航熊本 City Hotel	E3	096-211-1111	191	T 35,090~ W 24,200~ SU 87,120~ 和 72,600~	Information provided at the shared parking lot (fee paying)
	7	TOYOKO INN Kumamoto Jyo Tori chosuji 東横INN 熊本城通町筋 Business Hotel	F3	096-325-1045	198	S 6,400~ T (Two guests per room) 8,900~ EW (Two guests per room) 7,900~	1,000yen 16:00 - 10:00 the next morning *First-come-first-served. Out of hours: ¥100 per hour
	8	HOTEL WING INTERNATIONAL Select Kumamoto ホテルウィングインターナショナルセレクト熊本 Business Hotel	F3	096-325-1000	152	*Call for rates	Affiliated parking lot 1,100yen
	9	HOTEL MIELPARQUE KUMAMOTO ホテルメルパルク熊本 City Hotel	F3	096-355-6311	60	*Call for rates	Call for rates
	10	GR HOTEL GINZADORI ジーアールホテル銀座通 Business Hotel	E4	096-319-8888	70	S 5,300~ T 6,900~ W 5,900~	12 vehicles 1,400yen Motorcoaches are permitted
	11	R&B Hotel Kumamoto Shimotori R&Bホテル熊本下通 Business Hotel	E4	096-356-7272	221	*Call for rates	No parking
	12	SOTETSU GRAND FRÉSA KUMAMOTO 相鉄グランドフレッサ熊本 Business Hotel	D4	096-353-0203	247	S 6,000 T 8,000~ W 7,000~ Tri 9,000~	Information provided at the shared parking lot
	13	Washington Hotel Plaza Kumamoto 熊本ワシントンホテルプラザ Business Hotel	E5	096-355-0410	350	*Call for rates	1,100yen
	14	KUMAMOTO GREEN HOTEL 熊本グリーンホテル Business Hotel	D4	096-325-2222	78	S 8,000 SW 9,000 T 12,000	Information provided at the shared parking lot
	15	TOYOKO INN Kumamoto Shinshigai 東横INN熊本新市街 Business Hotel	D4	096-324-1045	220	S 7,500~ T 10,500~ W 10,000~ EW 9,000~	800yen *First-come-first-served.
	16	Richmond Hotel Kumamoto-Shinshigai リッチモンドホテル熊本新市街 Business Hotel	D4	096-312-3511	158	*Call for rates	Call for rates
	17	COMFORT HOTEL KUMAMOTO SHINSHIGAI コンフォートホテル熊本新市街 Business Hotel	D4	096-211-8411	157	S 5,400~ T 8,000~ W 7,000~	Information provided at the shared parking lot
	18	REF Kumamoto by VESSEL HOTELS レフ熊本byベッセルホテルズ Business Hotel	D4	096-328-7777	229	S 9,000~ T 12,500~ W 9,500~ Tri 13,000~	Information provided at the shared parking lot
	19	Kumamoto Tokyu REI Hotel 熊本東急REIホテル Business Hotel	C4	096-322-0109	140	*Call for rates	Information provided at the shared parking lot (fee paying)
	20	KOKO HOTEL PREMIER KUMAMOTO KOKO HOTEL Premier 熊本 Business Hotel	C4	096-355-6700	205	T 13,000~ W 9,000~	Affiliated parking lot
	21	nest hotel kumamoto ネストホテル熊本 Business Hotel	B4	096-322-3911	201	S 8,500~ T 13,000~ W 13,000~ Tri 18,000~	1,000yen
	22	dormy inn KUMAMOTO 天然温泉 六花の湯ドリーミン熊本 Business Hotel	C4	096-311-5489	290	*Call for rates	1,200yen

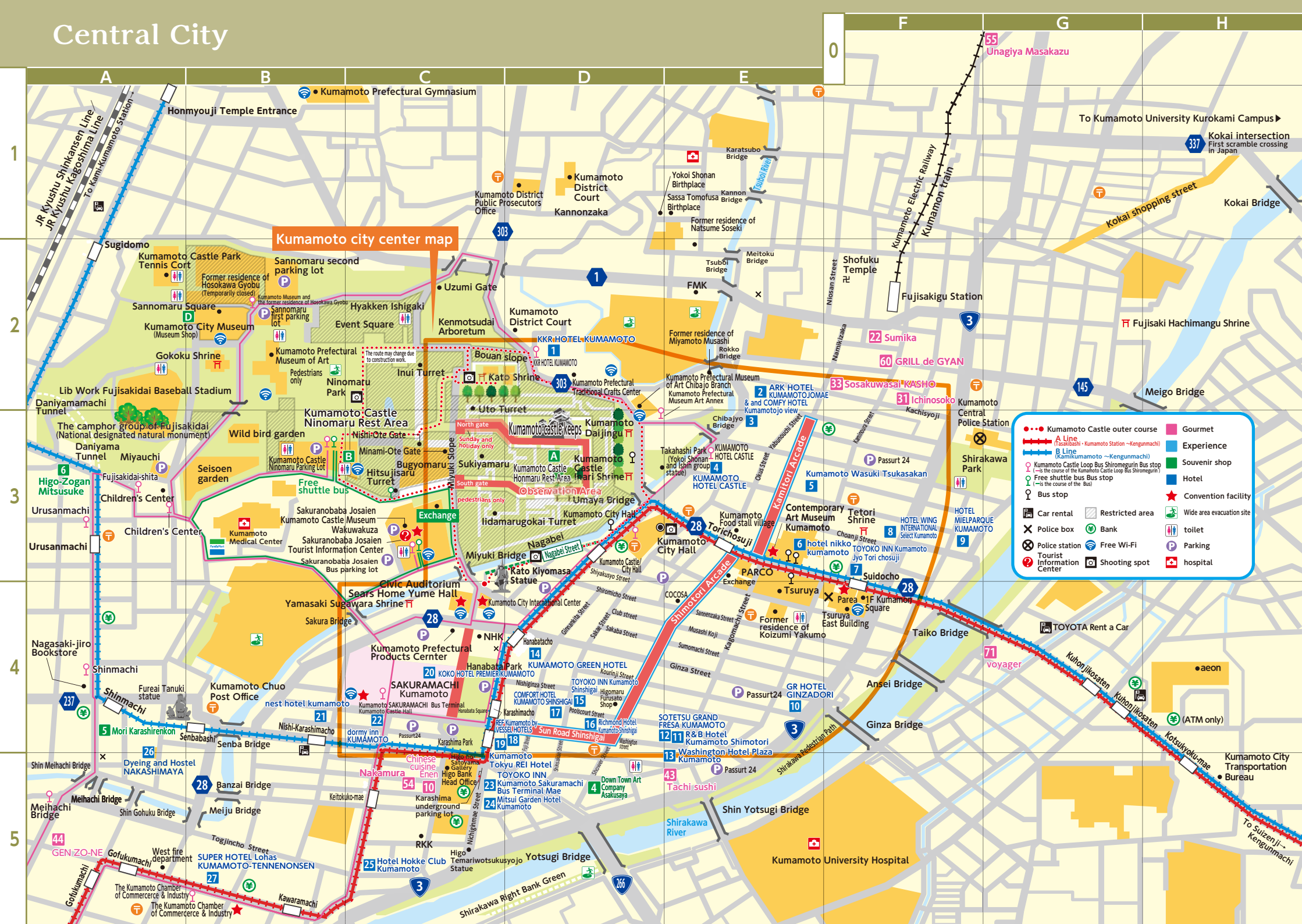
No.	Hotel/Ryokan	Address	MAP	TEL	Number of rooms	Room type/rate	Parking lot rates
Central City	23	TOYOKO INN Kumamoto Sakuramachi Bus Terminal Mae 東横INN 熊本桜町バスターミナル前 Business Hotel	C5	096-322-1045	152	S 6,000~ T 9,000~ W 8,500~ EW 7,500~	500yen
	24	Mitsui Garden Hotel Kumamoto 三井ガーデンホテル熊本 Business Hotel	D5	096-352-1131	226	*Call for rates	1,100yen
	25	Hotel Hokke Club Kumamoto ホテル法華クラブ熊本 Business Hotel	C5	096-322-5001	147	S 7,700 T 14,300(Two guests)	1,100yen
	26	Dyeing and Hostel NAKASHIMAYA 染物と宿の中島屋 Guesthouse	A4	096-202-2020	7	S 3,480~	No parking
	27	SUPER HOTEL Lohas KUMAMOTO-TENNENONSEN スーパーホテルLohas熊本天然温泉 Business Hotel	B5	096-351-9000	249	S 6,480~ Economy twin 11,000~	500yen *First-come-first-served.
	28	ANA CROWNE PLAZA KUMAMOTO NEW SKY ANAクラウンプラザホテル熊本ニュースカイ City Hotel	F3	096-354-2111	187	*Call for rates	1,500yen
	29	Tsuki Ga Kirei Desune 月が綺麗ですね Guest house	F5	080-8411-5251	4	S 4,000~ 和 4,300~ 洋 5,300~	No parking
Kumamoto Station Area	30	HOTEL ROUTE-INN KUMAMOTO EKIMAE ホテルルートイン熊本駅前 Business Hotel	D3	050-5847-7557	170	S 6,600~ SW 11,500~ T 13,500~	500yen *First-come-first-served.
	31	THE NEW HOTEL KUMAMOTO ザ・ニューホテル熊本 City Hotel	D3	096-326-1111	123	*Call for rates	Information provided at the shared parking lot
	32	TOYOKO INN Kumamoto Eki Mae 東横INN熊本駅前 Business Hotel	C4	096-351-1045	331	S 7,200~ T 10,200~ W 9,700~ EW 8,700~ DXT 14,200~	500yen
	33	SUPER HOTEL KUMAMOTOEKIMAE TENNENONSEN スーパーホテル熊本駅前天然温泉 Business Hotel	C4	096-324-9000	100	S 6,500~ T 8,700~ W 8,500~	Please enquire the hotel about parking
	34	THE BLOSSOM KUMAMOTO THE BLOSSOM KUMAMOTO City Hotel	C4	096-327-8763	203	*Call for rates	Affiliated parking lot 1,000yen
	35	Hotel Honjin ホテル本陣 Ryokan	C5	096-354-9191	40	S 7,000~ T 6,000~	Free
	36	Youthpia Kumamoto Kumamoto-ken Seinenkaikan ユースピア熊本(熊本県青年会館) Publicly operated inn	Suizenji	096-381-6221	14	T 4,370~ 和 3,500~	Free
	37	Smile Hotel Kumamoto Suizenji スマイルホテル熊本水前寺 Business Hotel	Suizenji	096-383-8410	85	S 4,800~ T 7,400~ Family Twin 9,200~	800yen~ *In order of arrival on the day
	38	Suizenji Mutual Aid Hall Gratia 水前寺共済会館 グレーシア Public Inn	Suizenji	096-383-1281	31	S 6,900 T 6,400 和 6,100	Free
	39	Matsuyabekkan 松屋別館 Business Hotel	Suizenji	096-213-1331	52	*Call for rates	Free
Suizenji Area	40	Ryotei Matsuyahonkan Suizenji 旅亭 松屋本館 Suizenji Ryokan	Suizenji	096-381-1331	13	*Call for rates	Free 8 vehicles Other reserving parking lots are available
	41	Hotel Kumamoto Terra ホテル熊本テルサ City Hotel	Suizenji	096-387-7777	62	S 6,240 T 11,620 W 8,080 和 14,310	700yen
	42	Monohana 湧泉の宿 藻乃花 Ryokan	Suizenji	096-340-0727	5	和 12,100~	Free
	43	HOTEL PEACEFUL ホテルピースフル Business Hotel	Nishihara Higashi-ku	096-388-1188	87	S 5,200~ SW 5,700~ W 8,080 *The rates are for four people.	Free Overseas vehicles, except for groups, are charged extra.
	44	KIKUNAN ONSEN U-BELL HOTEL 菊南温泉ウベルホテル City Hotel	Kita-ku	096-344-5600	86	*Call for rates	Free
	45	Ryokan yayanoyu 旅館 ややの湯 Ryokan	Ueki 1	096-274-6383	6	和 28,000~ (1night 2meals /per person)	Free 50 vehicles

Kumamoto Station Area



A Line (Takasibashi - Kumamoto Station - Kengunmachi)	Post office
B Line (Kamikumamoto - Kengunmachi)	Gourmet
Kumamoto Castle Loop Bus Shiromegurin Bus stop (=is the course of the Kumamoto Castle Tour Bus Shiromegurin)	Experience
Bus stop	Souvenir shop
Car rental	Parking
Police box	Bank
Tourist Information Center	Free Wi-Fi
Convention facility	Wide area evacuation site

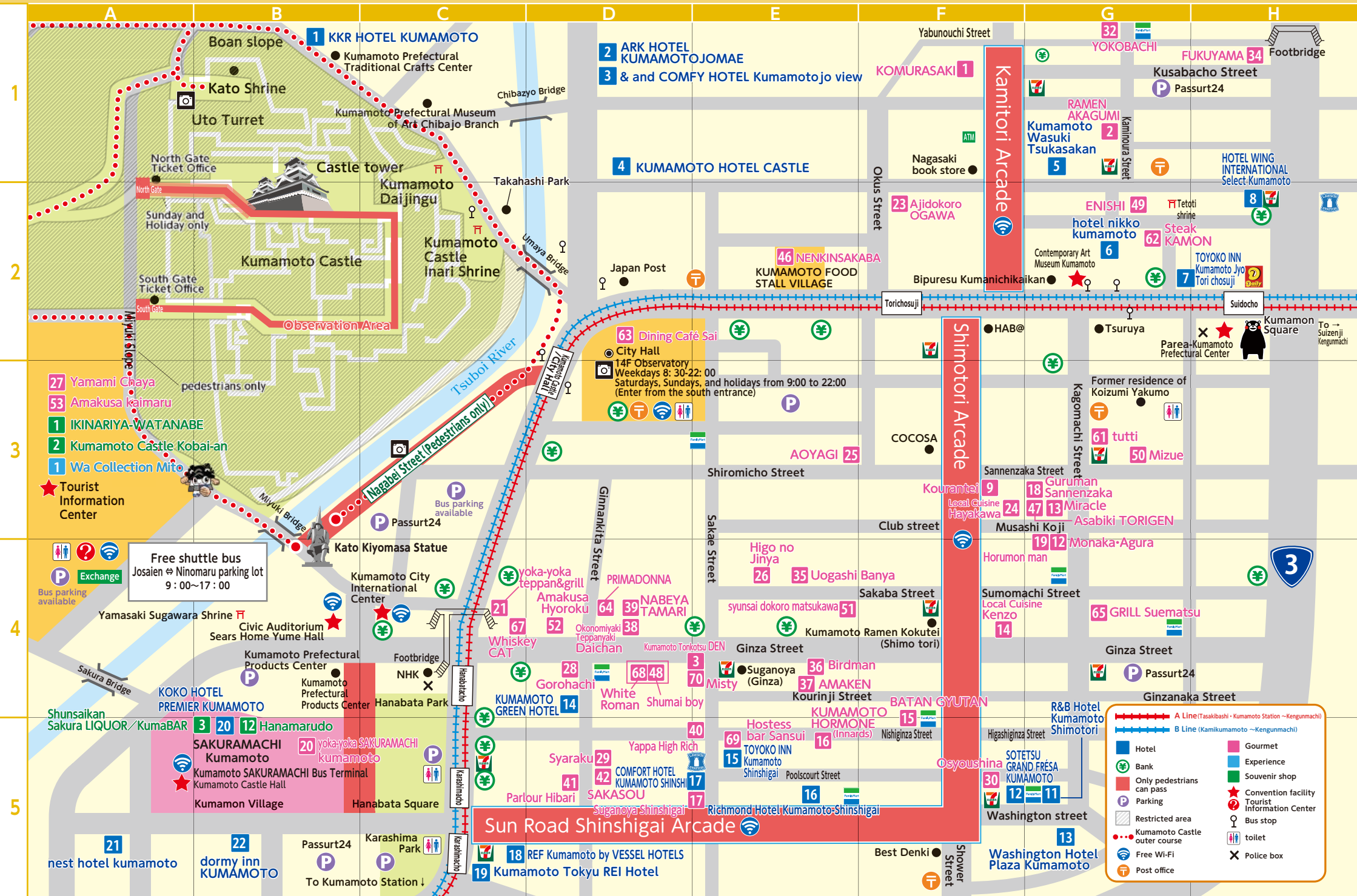
Central City



Kumamoto city center map

	Kumamoto Castle outer course		Gourmet
	A Line (Tanabashi - Kumamoto Station - Kengunmachi)		Experience
	B Line (Kumamoto - Kengunmachi)		Souvenir shop
	Kumamoto Castle Loop Bus Shimogurin Bus stop (← is the course of the Kumamoto Castle Loop Bus Shimogurin)		Hotel
	Free shuttle bus stop (← is the course of the Bus)		Convention facility
	Bus stop		Wide area evacuation site
	Car rental		Restricted area
	Police box		Free Wi-Fi
	Police station		Parking
	Tourist Information Center		hospital
	Shooting spot		toilet

Downtown Area



- 27 Yamami Chaya
- 53 Amakusa kaimaru
- 1 IKINARIYA-WATANABE
- 2 Kumamoto Castle Kobai-an
- 1 Wa Collection Mito

Free shuttle bus
 Josaien ⇄ Ninomaru parking lot
 9:00~17:00

- A Line (Taskibashi - Kumamoto Station - Kengunmachi)
- B Line (Kamikumamoto - Kengunmachi)
- Hotel
- Ⓜ Bank
- Only pedestrians can pass
- P Parking
- ⊞ Restricted area
- Kumamoto Castle outer course
- Ⓜ Free Wi-Fi
- Ⓜ Post office
- Gourmet
- Experience
- Souvenir shop
- ★ Convention facility
- ? Tourist Information Center
- Ⓜ Bus stop
- ♿ toilet
- ✕ Police box

Suizenji Area

Suburbs



Suizenji Jojuen Garden

A circuit-style garden overflowing with greenery and ambiance

The garden came into being when Hosokawa Tadatoshi, the third successor of the Higo Hosokawa family, who became the first lord of the Kumamoto domain in 1632, built a tea house. It was later completed at roughly the same scale as today's when Tsunatoshi, the third domain lord, took over. The garden, centering on a pond fed by subsoil water from Mt. Aso, is surrounded by gently undulating mounds and rocks partially submerged in water, allowing visitors to enjoy the beauty of nature and the garden in all four seasons.

8-1, Suizenji Koen, Chuo-ku, Kumamoto City
Open all year round
8:30 - 17:00 (Last entry 16:30)
096-383-0074

400 yen for persons 16 years and over, 200 yen for persons 6 to 15 years old.
10% off admission fee for a group of 30 or more

*Admission for disability certificate holders: 200 yen for persons 16 years and over, 100 yen for persons 6 to 15 years old.
Align at Suizenji Koen tram stop and walk for approximately 4 minutes.

Suizenji & Lake Ezu Area Pamphlet



Sightseeing guidebook for sites associated with Akechi Mitsuhide's daughter, Gracia, and the Tokugawa family.

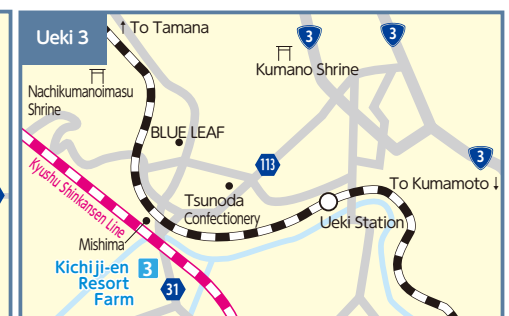
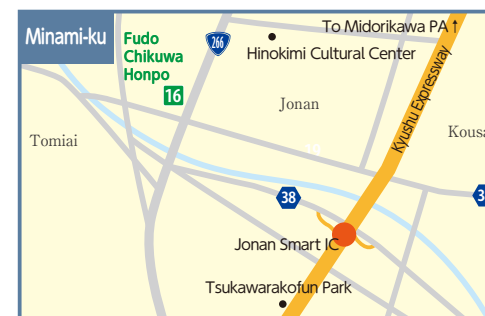
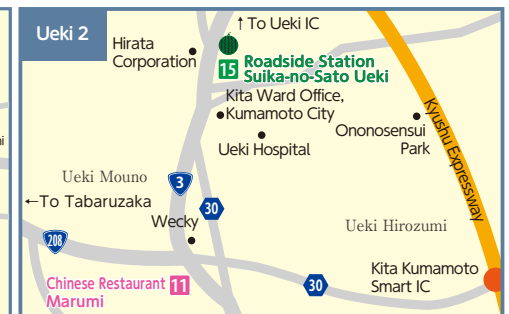


To request a pamphlet

Kumamoto Sightseeing Guidebook

search

*Japanese language only





Information



Kumamoto Station Tourist Information Center

【Address】

3-15-30, Kasuga, Nishi-ku, Kumamoto City
(inside of JR Kumamoto Station)

TEL: 096-327-9500

Hours: 9:00~17:30

Open all year round

English-speaking staff available

1-Day tickets Available

Free Wi-Fi Spot



Sakuranobaba Josaien Tourist Information Center

【Address】

1-1-3, Ninomaru, Chuo-ku, Kumamoto City
(inside of

Sakuranobaba Johsaien)

TEL: 096-322-5060

Hours: 9:00~17:30

Closed year end

English-speaking staff available

1-Day tickets Available

Free Wi-Fi Spot

Kumamoto Sightseeing & Gourmet on X
@info_kicb

Kumamoto Sightseeing & Gourmet on facebook
Motto Kumamoto-Travel info Kumamoto

Kumamoto Sightseeing & Gourmet on Instagram
@kumamoto-tourism-official



Kumamoto International Convention and Tourism Bureau

一般財団法人熊本国際観光コンベンション協会



〒860-0041

Senju Bldg. 5F, 4-30-1 Saikumachi, Chuo-Ku, Kumamoto city

TEL 096-359-1788 FAX 096-359-8520

URL <https://kumamoto-icb.or.jp/>

E-mail:kumaconn@kumamoto-icb.or.jp

Recruiting participating stores!!

*The information printed herein is correct as of December 2023.

*All prices are inclusive of tax.