

Suizenji Jojuen Garden Guided Tour



We highly recommend exploring Suizenji Jojuen Garden with a tour guide. As you stroll through the beautiful landscape, the guide's explanations will enhance your appreciation of Kumamoto's water, nature, culture, and history.

Guided Tour Days : Monday, Tuesday, Thursday, Friday

Reception : Yusuitei

Reception Hours : 10AM – 3PM
(Reservations prioritized, walk-ins accepted)

Fee : ¥1,000 per person (¥5,000 for groups of 5 or more)

*A guide can accommodate up to 8 guests per tour.

Hosokawa-ryu Bonseki Experience



From the history of Hosokawa-ryu Bonseki (the Hosokawa style of tray landscape art) to the proper use of tools, a certified Bonseki instructor will provide careful guidance, ensuring that even first-time participants can enjoy the experience with confidence.

Available Days : Tuesday, Sunday

Reception Hours : 10AM – 3:30PM

Location : 2nd floor of Yusuitei

Capacity : Up to 3 participants

Fees : ● 30-minute course: ¥5,000
● 60-minute course: ¥10,000
● 90-minute course: ¥15,000

*Price per person (tax included). Includes a beverage and a special garden seal.

Traditional Japanese Games Experiences



You can easily enjoy Traditional Japanese Games that have been popular for a long time.

You can freely experience Kendama, Beanbags, Ohajiki, Spinnig top, Origami, etc., according to your request. With a toy gift!

You can take your favorite toy home as a souvenir. (Extra charge)

Available Days : Monday, Thursday, Friday, Saturday

Reception Hours : 10AM – 3PM

Location : 2nd floor of Yusuitei

Capacity : Up to 8 participants

Fee : ¥1,000 (50min. per person)

Eligible Age : 6 years and older

Issued by : Suizenji Higo Hosokawa Cultural Center, Yusuitei



湧水亭
Yusuitei



[Reservations & Inquiries]

Suizenji Higo Hosokawa Cultural Center, Yusuitei

5-23, Suizenji Koen, Chuo-ku, Kumamoto City

Tel : 096-285-8893 Hours : 9AM-5PM

Closed on Wednesdays

(Closed on the following day if Wednesday is a public holiday)

Walk-ins welcome

[Access]

By Tram : Get off at Suizenji Park Station, then walk for about 4 minutes.

By JR Train : Get off at Suizenji Park Station, then walk for about 10 minutes.

*The information published is up to date as of June 2025.

水前寺 WAKU SUZENJI EXCITING WAKU GOURMET BOOK



Suizenji Gourmet MAP



6 Okuyama
Suizenji mochi



2 gingila
One plate dish with full of fresh veggies

Relaxing atmosphere with private rooms
Popular set meals and wagyu beef rice for lunch!
Delicious local dishes for dinner
Amazing horse meat shabu-shabu!

Solo-Higo Dinig
Matsuya Annex

Azuma Sushi

32 Ogawa
- Fugu Restaurant

Matsuya Honkan

27 Haraguchi
- Japanese cuisine

Rich torkotsu ramen for lunch
Jiro-style for dinner (hearty, garlic ramen)
Chashu is amazing! (braised pork)

28 Toraya
29 Kazura

Gentaku-ji temple

Izumi Shrine

Suizenji Jojuen

gingila Jugoya

1 Park Hayashi

3 Saryo Shohaku

11 Sugi yohoen

12 Hayashi Ikinari Dampings

13 Kobai Japanese Sweets

16 Senri

Casual meals and sweets Cafe
A lovely gallery with pottery

Amazing honey soft-serve ice cream!

Refreshing walk along a river with bubbling spring water!

Former Residence of L.L. Janes

Business hours

Daytime

Day to evening

Evening to late night

Highly sought-after restaurant!
Try the grilled horse offal and stir-fried bean sprouts!

17 Juttokuya

Bus stop to Airport

To Lake Ezu

City Gymnasium

wonderful dishes that reflect the chef's style!
Full of fresh veggies and visually appealing

Takeout local dishes made with "Suizenji vegetables"!
Free cold water with own bottle!

Flower shop with a cute gift shop
A variety of takeout menus

Second-floor restaurant
Local dishes and a variety of menus

From the honey shop
Secret shortcut!

7 Taiyo

6 Okuyama

5 Shoka

4 Yusuitei

8 Unoya

9 CASSIS ORANGE

10 Suizenji Spice Dou

21 CAFE LA PAIX

22 Yakitoriya

20 Iroha

19 MOANIN

18 Bon appétit

17 Juttokuya

16 Senri

15 Kobai Japanese Sweets

14 Hayashi Ikinari Dampings

13 Kobai Japanese Sweets

12 Hayashi Ikinari Dampings

11 Sugi yohoen

10 Suizenji Spice Dou

9 CASSIS ORANGE

8 Unoya

7 Taiyo

6 Okuyama

5 Shoka

4 Yusuitei

3 Saryo Shohaku

2 gingila

1 Park Hayashi

0 Suizenji Jojuen

-1 Izumi Shrine

-2 Gentaku-ji temple

-3 Kazura

-4 Toraya

-5 Haraguchi

-6 Suizenji mochi

-7 Suizenji

-8 Shin-suizenji Station

-9 Kokubu

-10 Suizenji Spice Dou

-11 Biryani

-12 Suizenji Spice Dou

-13 Biryani

-14 Suizenji Spice Dou

-15 Biryani

-16 Suizenji Spice Dou

-17 Biryani

-18 Suizenji Spice Dou

-19 Biryani

-20 Suizenji Spice Dou

-21 Biryani

-22 Suizenji Spice Dou

-23 Biryani

-24 Suizenji Spice Dou

-25 Biryani

-26 Suizenji Spice Dou

-27 Biryani

-28 Suizenji Spice Dou

-29 Biryani

-30 Suizenji Spice Dou

-31 Biryani

-32 Suizenji Spice Dou

-33 Biryani

-34 Suizenji Spice Dou

-35 Biryani

-36 Suizenji Spice Dou

-37 Biryani

-38 Suizenji Spice Dou

-39 Biryani

-40 Suizenji Spice Dou

-41 Biryani

-42 Suizenji Spice Dou

-43 Biryani

-44 Suizenji Spice Dou

-45 Biryani

-46 Suizenji Spice Dou

-47 Biryani

-48 Suizenji Spice Dou

-49 Biryani

-50 Suizenji Spice Dou

-51 Biryani

-52 Suizenji Spice Dou

-53 Biryani

-54 Suizenji Spice Dou

-55 Biryani

-56 Suizenji Spice Dou

-57 Biryani

-58 Suizenji Spice Dou

-59 Biryani

-60 Suizenji Spice Dou

-61 Biryani

-62 Suizenji Spice Dou

-63 Biryani

-64 Suizenji Spice Dou

-65 Biryani

-66 Suizenji Spice Dou

-67 Biryani

-68 Suizenji Spice Dou

-69 Biryani

-70 Suizenji Spice Dou

-71 Biryani

-72 Suizenji Spice Dou

-73 Biryani

-74 Suizenji Spice Dou

-75 Biryani

-76 Suizenji Spice Dou

-77 Biryani

-78 Suizenji Spice Dou

-79 Biryani

-80 Suizenji Spice Dou

-81 Biryani

-82 Suizenji Spice Dou

-83 Biryani

-84 Suizenji Spice Dou

-85 Biryani

-86 Suizenji Spice Dou

-87 Biryani

-88 Suizenji Spice Dou

-89 Biryani

-90 Suizenji Spice Dou

-91 Biryani

-92 Suizenji Spice Dou

-93 Biryani

-94 Suizenji Spice Dou

-95 Biryani

-96 Suizenji Spice Dou

-97 Biryani

-98 Suizenji Spice Dou

-99 Biryani

-100 Suizenji Spice Dou

-101 Biryani

-102 Suizenji Spice Dou

-103 Biryani

-104 Suizenji Spice Dou

-105 Biryani

-106 Suizenji Spice Dou

-107 Biryani

-108 Suizenji Spice Dou

-109 Biryani

-110 Suizenji Spice Dou

-111 Biryani

-112 Suizenji Spice Dou

-113 Biryani

-114 Suizenji Spice Dou

-115 Biryani

-116 Suizenji Spice Dou

-117 Biryani

-118 Suizenji Spice Dou

-119 Biryani

-120 Suizenji Spice Dou

-121 Biryani

-122 Suizenji Spice Dou

-123 Biryani

-124 Suizenji Spice Dou

-125 Biryani

-126 Suizenji Spice Dou

-127 Biryani

-128 Suizenji Spice Dou

-129 Biryani

-130 Suizenji Spice Dou

-131 Biryani

-132 Suizenji Spice Dou

-133 Biryani

-134 Suizenji Spice Dou

-135 Biryani

-136 Suizenji Spice Dou

-137 Biryani

-138 Suizenji Spice Dou

-139 Biryani

-140 Suizenji Spice Dou

-141 Biryani

-142 Suizenji Spice Dou

-143 Biryani

-144 Suizenji Spice Dou

-145 Biryani

-146 Suizenji Spice Dou

-147 Biryani

-148 Suizenji Spice Dou

-149 Biryani

-150 Suizenji Spice Dou

-151 Biryani

-152 Suizenji Spice Dou

-153 Biryani

-154 Suizenji Spice Dou

-155 Biryani

-156 Suizenji Spice Dou

-157 Biryani

-158 Suizenji Spice Dou

-159 Biryani

-160 Suizenji Spice Dou

-161 Biryani

-162 Suizenji Spice Dou

-163 Biryani

-164 Suizenji Spice Dou

-165 Biryani

-166 Suizenji Spice Dou

-167 Biryani

-168 Suizenji Spice Dou

-169 Biryani

-170 Suizenji Spice Dou

-171 Biryani

-172 Suizenji Spice Dou

-173 Biryani

-174 Suizenji Spice Dou

-175 Biryani

-176 Suizenji Spice Dou

-177 Biryani

-178 Suizenji Spice Dou

-179 Biryani

-180 Suizenji Spice Dou

-181 Biryani

-182 Suizenji Spice Dou

-183 Biryani

-184 Suizenji Spice Dou

-185 Biryani

-186 Suizenji Spice Dou

-187 Biryani

-188 Suizenji Spice Dou

-189 Biryani

-190 Suizenji Spice Dou

-191 Biryani

-192 Suizenji Spice Dou

-193 Biryani

-194 Suizenji Spice Dou

-195 Biryani

-196 Suizenji Spice Dou

-197 Biryani

-198 Suizenji Spice Dou

-199 Biryani

-200 Suizenji Spice Dou

-201 Biryani

-202 Suizenji Spice Dou

Let's eat all the food of Kumamoto at Suizenji!

Red Beef Cuisine

Kumamoto
Ramen Noodles

Spicy Lotus Root

Seafood from the
Amakusa Sea

Horse-meat Dish

Traditional Vegetables of Kumamoto "SUZENJINA"

Rich in nutrients such as polyphenols and iron

SUZENJINA carefully raised in JYOJYUEN can be enjoyed in a variety of dishes

1 TUNA SOBA JYUGOYA Suizenji-Branch

鯖soba十五屋

Ramen Shop



Tuna stock soup is rare in Kumamoto. Visitors can have their choice of soup (salt-based/soy sauce-based) and choice of noodles (thin/flat noodles). Toppings and side menu options are also available to enjoy.



🕒 11AM~7PM
📅 Irregular Holidays



2 gingila

Restaurant and
Coffee shop



Three dishes-lunch packed with local vegetables, spicy chicken curry, and dry keema omelet rice-come with soup and salad. Our lunch allows you to enjoy a variety of healthy, seasonal vegetables rich in vitamins and minerals, all on one plate.



🕒 11:30AM~2PM
5PM~9PM
📅 Monday and Tuesday
☎ 080-4288-5082



3 RESTAURANT PARK HAYASHI レストラン パーク林

Japanese
Restaurant



Enjoy the flavors of Japanese home cooking, the flavors of Kumamoto, and local Higo cuisine such as horse meat sashimi(Basashi) and deep fried lotus root filled with spicy mustard (Karashirenkon). Our restaurant's atmosphere is nostalgic, blending exotic and traditional charm.

🕒 10:30AM~4PM
📅 Irregular Holidays
☎ 096-382-9248

4 SHOKA

粧華

Takeout-only
Restaurant



Beer, liquor, ice cream and various drinks are available for take-out. Ice cream that is particular about the ingredients is a recommended dish. Organic herbal tea is popular as a great souvenir or gift.

🕒 11AM~6PM
📅 Sunday
☎ 096-285-8801



5 YUSUITEI

湧水亭

Souvenir Shop



We sell dressings, ice cream, sushi rolls, tempura, meatballs, and other items made with Suizenjina, a traditional Kumamoto vegetable grown within Suizenji Jojuen Garden. You can enjoy drinks and snacks here or to go. We also have other local souvenirs.

🕒 9AM~5PM
📅 Wednesday
☎ 096-285-8893



6 OKUYAMA

お菓子のおくやま

Sweet Shop



Our specialty, *Suizenji mochi* is carefully hand-baked one by one. We use glutinous rice from Kumamoto and azuki beans from Hokkaido to create a chewy texture and a well-kneaded sweet bean paste filling. We also sell *Chosen-ame*, a traditional confection that was once a preserved food during times of war.



🕒 8AM~5PM
📅 Open all year
☎ 096-383-0669

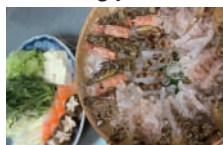
7 TAIYO

海老処 太陽

Japanese Restaurant



This restaurant specializes in Kumamoto delicacies and shrimp dishes. We offer a variety of shrimp-focused dishes. For lunch, our affordable set meals and bowls featuring jumbo shrimp are very popular.



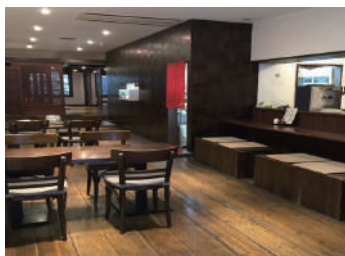
🕒 11:30AM~2:30PM
5PM~10PM
📅 Tuesday
☎ 096-384-3200



8 UNOYA

卯乃屋

Japanese gastropub



Enjoy delicious local flavors, from horse meat dishes to creative cuisine. We also welcome group gatherings for parties with friends, family, or larger groups.

🕒 5:30PM~10PM
📅 Monday and Tuesday
☎ 096-384-3938

9 CASSIS ORANGE

Bar



We have whiskey, natural wine, sake, cocktails etc... as well as about 10 kinds of snacks. The spacious original counter and custom-made chairs allow even parties of one to relax and enjoy themselves.



🕒 5PM~12AM
📅 Wednesday
☎ 096-248-6891

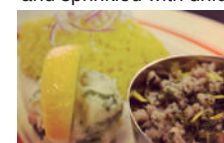
10 SUIZENJI SPICE DOU

水前寺香味堂

Biryani Restaurant



Biryani, one of our most popular dishes, is said to be one of the three most popular cooked rice dishes in the world, along with paella and matsutake mushroom rice. Unlike Japanese cooked rice, the dish is made with basmati rice, which is not sticky and has a smooth finish, and sprinkled with unique Japanese spices.



🕒 11:30AM~9PM
📅 Wednesday
☎ 070-1970-7899



11 SUGI YOHOEN

杉養蜂園

Natural foods store



A beekeeping company that handles everything from raising bees to collecting, producing, and selling honey in-house. We sell honey products such as soft serve ice cream, honey, manuka honey, and royal jelly in stores.

🕒 9:15AM~5:15PM
📅 Irregular Holidays
☎ 096-385-8538



12 SUIZENJI GALLERY SARYO SHOHAKU

水前寺ギャラリー 茶寮松柏

Cafe/Tea house



A café offering light meals and sweet treats made from locally produced ingredients, a gallery featuring ceramics by contemporary artists associated with Kumamoto, as well as a wide selection of tasteful antiques.



🕒 10AM~5PM
📅 Monday
☎ 096-282-8421



13 HAYASHI-NO
IKINARI DANGO

林のいきなり団子

Japanese
Sweets Shop



Ikinari dango is a delicious dumpling made with thick, soft, and flaky sweet potatoes and bean paste wrapped in dough. The red bean paste is made using domestically produced ingredients, and the sweet potatoes are sourced from contracted farmers.

🕒 9AM~3PM (Ends as soon as sold out)

📅 Tuesday and Wednesday

☎ 096-383-3970

14 MIHARASHI

みはらし

Sweets Shop &
Souvenir Shop



A shop where you can enjoy souvenirs and homemade local cuisine. Mochizuki, a hidden popular confectionery with smooth yolk paste filling inside a light snow-like skin made of egg white, are homemade from scratch every day using our secret recipe.



🕒 10AM~4PM

📅 Wednesday

☎ 096-381-2913

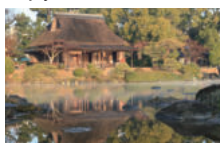
15 KOKINDENJUNOMA
OKASHINO KOBAI

(古今伝授の間)
お菓子の香梅

Sweets Shop



KOBAI is located in a historical building with thatched roof, named Kokindenju-no-ma, an Important Cultural Property designated by Kumamoto prefecture. Kokindenju-no-ma is the best place to enjoy the view of the beautiful garden Suizenji Jojuen. Matcha and sweets sets are available for a fee. Enjoy a moment filled with traditional Japanese hospitality.



🕒 9AM~5PM

📅 the second Tuesday
of every month

☎ 096-381-8008



16 SENRI

泉里

Japanese
Restaurant



A 130-year-old Japanese restaurant located in Suizenji Jojuen. Every spacious private room offers a great view of the Daimyo garden. You can enjoy a leisurely meal while experiencing the beautiful seasonal scenery all year round.



🕒 11AM~2PM
5PM~9PM

📅 Monday

☎ 096-381-1415
(Reservation only)



17 JYUTTOKUYA 十徳や 水前寺店

Izakaya
Restaurant



🕒 (Sun-Thurs)
5PM~11:30PM
(Fri/Sat)
5PM~12AM
📅 Irregular Holidays
☎ 096-386-2345



A spacious, purely Japanese-style seafood izakaya. We serve extremely fresh sashimi, Kumamoto specialties, and Kyushu cuisine! Sunken kotatsu seats and semi-private rooms perfect for small groups are available. We also have counter seats, so please feel free to make a reservation if you're a party of one.

19 MOANIN

Coffee Shop



🕒 12PM~10PM
📅 Wednesday
☎ 096-382-8719

This coffee shop has a relaxed, retro chic atmosphere and serves alcoholic beverages in the evening. Please try our signature homemade blended coffee and our popular handmade hamburger steak. Both are highly recommended!

22 YAKITORIYA 焼鶏屋



🕒 6PM~11PM
📅 Sunday
☎ 096-234-6033

Yakitoriya is an izakaya restaurant located along the tram street (Densha-dori). It's definitely a place worth stopping by!

18 BON APPETIT ボナペティ

French
Restaurant



🕒 11:30AM~2PM
5:30PM~9PM
📅 Thursday
☎ 096-385-1023



The restaurant offers a casual and relaxed atmosphere, with garden views through the window, where you can enjoy French cuisine made with vegetables and seafood from Kumamoto.

20 IROHA

Izakaya
Restaurant



🕒 5:30PM~11PM
📅 Sunday
☎ 096-382-6336

Our izakaya restaurant is popular for its horse sashimi, grilled offal, and stir-fried bean sprouts. We also have a wide selection of sake and shochu. For the final dish, we highly recommend trying the Champion.

23 KUMAMOTO RAMEN
TONBI

熊本拉麵 豚美

Ramen Restaurant



We offer seven types of ramen based on pork bone, including the standard pork bone ramen, spicy ramen, curry ramen, and more. Pork trotters, our specialty, are crispy on the outside and melt-in-your-mouth on the inside, making them a very popular menu item as well.



🕒 11:30AM~3PM
5:30PM~ close when
materials run out
Sunday : 11:30AM~3PM

📅 Monday

☎ 080-3221-0648



24 L'oasis ロアジス

French Restaurant



🕒 12:30PM~2:30PM
6PM~10PM
📅 Wednesday
☎ 096-213-0555



We offer time-consuming handmade dishes and sauces, with a sommelier chef selecting the perfect wine for each dish. We have established a sourcing route for safe and reliable ingredients from Kumamoto Prefecture. Our organic vegetables, fish, and meat, are also highly rated.

26 KAMINOMIZU 神の水

Japanese Restaurant



🕒 11:30AM~2PM
6PM~10PM
📅 Irregular Holidays
☎ 096-237-7507



We carefully cook each dish, giving first priority to health maintenance and making the most of the natural flavors of the ingredients, based on an old secret recipe book called "Ryori-katahi".

25 SUSHI RESTAURANT AOI & CAFE A-ONE

Japanese Restaurant



🕒 11AM~2:30PM
6PM~10:30PM
📅 Monday, Thursday,
Saturday, Sunday
☎ 096-381-9209

Our restaurant has a sushi counter and café-style tables. You can enjoy fresh sushi made right in front of you. After your meal, please feel free to relax with our café menu.

27 HARAGUCHI 日本料理 はらぐち

Japanese Restaurant



🕒 11AM~10PM
📅 Irregular Holidays
☎ 096-383-1931
(Please contact us in advance.)



With local vegetables, seafood, and livestock products, our skilled chefs transform the seasonal ingredients of each season into a blissful dish through their careful and attentive work.

¥3,850(only at night) for Topsy course
¥8,800(Reservation only) for Botan course
20tables (A private room is available with an extra fee)

28 LIVE FISH, SUSHI, LOCAL CUISINE TORAYA

活魚・脂・郷土料理 とらや

Seafood Restaurant



🕒 11:30AM~2:30PM
5PM~10PM
📅 Irregular Holidays
☎ 096-383-4137



Our Japanese-style interior has a casual atmosphere with sitting seats around the sunken floor. Besides seasonal seafood meals, we serve local cuisine such as sliced raw horse meat.

29 KAZURA かづら

Izakaya Restaurant

Izakaya Restaurant

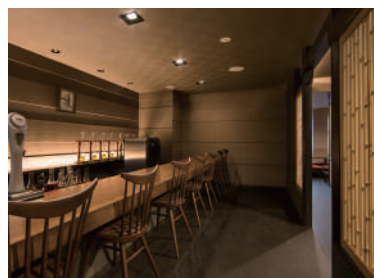


🕒 (Tuesday to Saturday)
5:30PM~10PM
(Sunday)
5PM~9:30PM
📅 Monday
☎ 096-383-7139

An izakaya restaurant with a retro-chic atmosphere. On our menu are dishes with a taste of nostalgic home cooking. Counter seats and small private rooms for families are available for your enjoyment.

30 HIGO DINING SOLO 肥後ダイニング そろ

Japanese Restaurant



🕒 11AM~2PM
5:30PM~10PM
📅 Monday
☎ 096-381-1223



Our lunch, a Japanese set menu of seasonal ingredients, is very popular. At night the shop turns to a pub and we welcome you with wide variety of menu options such as horse meat, Aso Akaushi beef, local cuisine, and raw sliced fish. You can enjoy our food and drink in a relaxing atmosphere at counter seats, sitting seats, or in a private room.

31 AZUMA-SUSHI 東寿司

Sushi Restaurant



🕒 11AM~2:30PM
5PM~10PM
📅 Wednesday
☎ 096-383-2468



We are a long-established sushi restaurant with over 90 years of history. With great care and passion, we prepare dishes featuring vibrant and seasonal ingredients.

32 Japanese Restaurant FUGU NO OGAWA

Japanese Restaurant



🕒 11:30AM~2:30PM
5PM~11PM
📅 Tuesday
Summer: Irregular Holidays
※ Need to confirm
☎ 096-387-1129



Ogawa Fishery in Amakusa, Kumamoto Prefecture directly operates this shop. We succeeded in detoxicating pufferfish through the painstaking joint research with Nagasaki University. We established the complete management of their feed and have been cultivating non-poisonous pufferfish. Please feel free to relax and come enjoy our pufferfish anytime.

Suizenji



Flowers and herb tea are sold at flower shop on 1st Floor and Beauty salon on 2nd Floor



Yuya Suizen
-Luxury Sauna & Spa-
water bath with
ground water
from Mt. Aso

Matsuya Bekkan
Luxury Sauna & Spa

Suizenji

Exciting
Spring up excitement
place

Live Demo Sales of
hand made rice crackers

Traditional craft,
Higo Inlay store

Gentaku-ji
temple

Izumi Shrine

Bowling alley
at Suizenji
Kanko Center

Gift shop sells
famous sweets
"Mochizuki"

Suizenji Jojuen

After having tea
in Kokindenju no Ma
sweets can be bought
at Kobai

Former Oe Residence of
Natsume Soseki



Hosokawa style BONSEKI

Kumamoto Prefectural
Government Office

Statue of Luffy from One Piece
Ginkgo tree's peak season is
in November

Statue of Tony Tony Chopper
from One Piece in Kumamoto
City Zoo and Botanical garden

Business hour
Daytime
Day to evening

All the Souvenir goods
including Kumamoto
famous products,
horse oil "BaYu"

Local Souvenir goods
and food

Tourist Information Center
Suizenji area info desk
and a workshop of
Japanese traditional art,
Hosokawa style BONSEKI,
on 2nd Fl.

Sweets Store
Okuyama

Shoka

Antique store
Mannerya
Find Unique goods!

Kusumoto
Souvenir
Store

Restaurant
Park Hayashi

Restaurant
Miharashi

Sweets shop
Kobai

Café Saryo Shohaku
Suizenji Gallery

Antiques and
knick-knacks
in the shop

Main entrance gate of
Suizenji Joujuen

Recommended Spot!
walk along Spring water stream

Take a turn
at the Spiral staircase

Shortcut,
only local knows,
by the honey store

Kimono rental shop,
walk in the park
while wearing a Kimono
with nice scenery!

Japanese
collection
Mito

Cafe Stix(Stick's)
Billiards

Food and products store
Fukuya

SUGI BEE
GARDEN

Chelsea

Minami
Shouten

Sonoya

Jewelries and
imported goods
shop

Suizenji
Park

Former Residence of
L.L. Janes

Bus stop
to Airport

Bus
To Lake Ezu

City Gymnasium

Prefectural Office Street



A SONOYA Suizenji branch **そのや** Handmade cookie shop



We bake cookies called "HIGO MONDO" using fresh, local eggs right in front of you! We are proud of our handmade almond crunch cookies' taste, technique, and tradition which makes up "handmade" SONOYA.



10AM~6PM

Sunday

096-380-6175



B MINAMI STORE 南商店 Souvenir shop



We have Higo Zogan Gold Inlay, Kumamoto's traditional handcraft in Suizenji. Our ointment and soap made from horse oil are also popular products.

10AM~4PM

Irregular holidays

096-383-0515

C RESTAURANT PARK HAYASHI レストラン パーク林 Variety store



We sell lovely imported goods and handmade accessories, etc. We also have many one-of-a kind Indian cotton cloths, so please feel free to come and find your favorite one.

10:30AM~4PM

Irregular Holidays

096-382-9248

D CHELSEA チェルシー Antique shop



We sell attractive and unique antiques from Asia and Japan. Come find your own antique item!

10AM~5PM

Irregular holidays

096-381-8882

E KUSUMOTO STORE 楠本商店 Wholesale food store



We have a wide variety of signature Kumamoto souvenirs. Also, Kuma Shochu (distilled spirits made from rice) and sweets with a picture of Kumamon are popular.

8:30AM~5PM

Wednesday

096-383-1622

F SHOKA 粧華 Flower shop Beauty salon Gift shop



We have a flower and gift shop on the 1st floor and a beauty salon for manicure, eyelash perm, and eyelash extensions on the 2nd floor. To place an order, please call or send us a DM on Instagram. Delivery available.

11AM~6PM

Sunday

096-285-8801



G YUSUITEI 湧水亭 Information Center



9AM~5PM

Wednesday

096-285-8893



Yusuitei is a place where you can learn about Higo Hosokawa's culture, which has a long history. Items related to the Hosokawa culture are exhibited here such as tea ceremony utensils from Higo-Koryu Sado that have been passed down in Kumamoto, a bow and a saddle from Takeda-ryu Yabusame (Takeda style equestrian archery) with over 1,000 years of history, and Hosokawa-ryu Bonseki (the Hosokawa style of tray landscape art) which Kumamoto is proud of. We will provide you with information on nearby tourist attractions and restaurants, as well as various sightseeing information.

Also, you can refill your water bottle with Kumamoto's delicious groundwater for free.

H OKUYAMA お菓子のおくやま Souvenir Shop



We sell souvenirs such as Kumamoto's specialty horse oil and local sweets from Kumamoto. *Suizenji mochi* is also a popular souvenir.

8AM~5PM
Open all year
096-383-0669

I FUKUYA 富久屋物産店 Souvenir Shop



We offer various Kumamoto folk crafts, specialty sweets, and handicrafts. Popular items include folk crafts like Kiji-uma (decorative wooden horses), Kuma Shochu (local distilled liquor), Banpeiyu (a large citrus fruit), and specialty sweets. We also have a variety of Kumamon goods, which is very popular among international guests.

9AM~5PM
Irregular Holidays
096-384-1779

J Wa-Collection-MITO 和Collection美都 Kimono rental

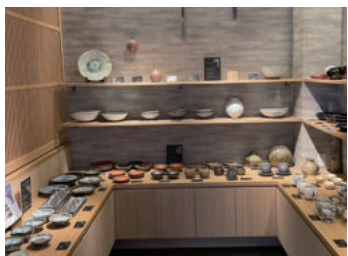


We offer a complete rental set including kimono, obi (sash), juban (undergarment), zori (sandals), and a bag. The package includes dressing assistance, admission to Suizenji Jojuen Garden, and a photo session in our studio. Plus, you'll receive a complimentary Kumamon fan!

10AM~4PM
Wednesday
096-362-6439



K SARYO-SHOHAKU 水前寺ギャラリー 茶寮松柏 Cafe & Gallery



We showcase pottery by contemporary artists connected to Kumamoto, along with traditional crafts from Kumamoto Prefecture such as Shodai-yaki, as well as antiques. We also sell beautiful crafts that make perfect souvenirs or gifts.

10AM~5PM
Monday
096-282-8421



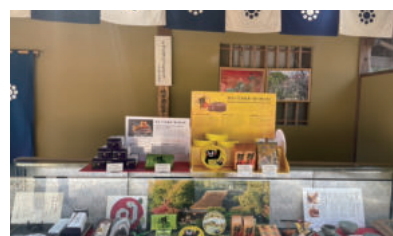
L MIHARASHI みはらし Souvenir Shop



We offer a wide range of local products, from Suizenji seaweed to traditional crafts of Kumamoto. The popular Kumamoto confectionery *Mochizuki* is available for purchase at our store and only two other locations within Kumamoto prefecture.

10AM~4PM
Wednesday
096-381-2913

M KOBAI (古今伝授の間) お菓子の香梅 Sweet shop



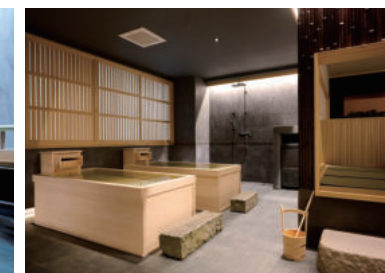
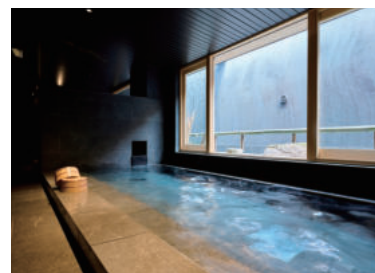
10AM~5PM
The second Tuesday of every month

096-282-8421



We have a selection of carefully chosen confectionery. *Kaseita* is one of the famous sweets from Kumamoto. This traditional sweet has a rich history, dating back to the Edo period when it was presented to the Tokugawa shoguns by the Hosokawa family. *Kaseita* is known for its unique flavor and texture, making it a beloved treat among locals and visitors alike.

N Luxury Sauna&Spa-SUIZEN 湯屋 水禅 Sauna & Spa



6AM~11AM
12PM~12PM
Open all year
096-213-1331

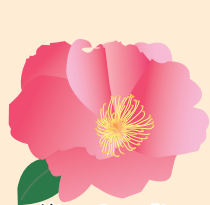


Our sauna is distinguished by the use of basalt from the foot of Mount Aso. Additionally, we offer a cold bath, large public bath, post-bath lounge, and coworking space to provide you with a rejuvenating experience for both body and mind.

Suizenji Jojuen Guide Map



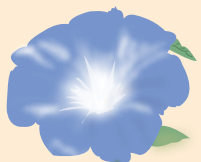
Six traditional
Higo flowers



Higo Camellia



Higo Chrysanthemum



Higo Morning Glory



Higo Sasangua



Higo Iris



Higo Peony



You can have a valuable experience of making "Bonseki" at the information center, Yusuitei, on the Sando Shopping Street.
P5 6 • P14 6 The details are written on the back side.

Suizenji Jojuen

〒862-0956 8-1, Suizenji Koen, Chuo-ku, Kumamoto-shi

Tel: +81-(0)96-383-0074 Fax: +81-(0)96-383-4233

Fees: Adults (16 years and older): ¥400 Children (6-15 years old): ¥200

Groups of 30 or more (including adults & children): 10% discount on admission fee

Persons with Disability certificate Adults: ¥200 Children: ¥100

Hours: 8:30AM-5:00PM

Izumi Shrine Tourist Spot Stamp Goshuin (Red Seal)



Tourist Spot Stamp
8:30AM-4:55PM
Free



Goshuin (Red Seal)
8:30AM-4:30PM
Fee:300yen ~



Depending on the time of year, Izumi Shrine offers seasonal limited-edition Goshuin.

Calendar of the Best Time to See Plants in Kumamoto

Goteiin

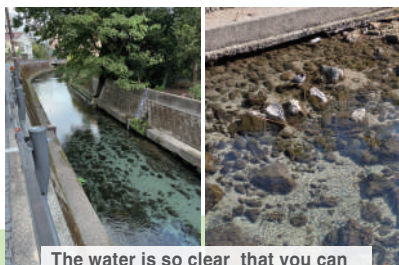


Sale Location
YUSUITEI
(Sando Shopping Street)
9AM-5PM
Fee:300yen

[illegible]

Places to Visit Around Suizenji Jojuen

Shokebori River



The water is so clear that you can see the riverbed, and spring water is still coming up.

**Former Residence
of L.L.Janes**



5 minute walk from Suizenji Jojuen



Address 〒862-0956 12-10 Suizenji Koen,
Chuo Ward, Kumamoto City

Contact Cultural Properties Section
Tel: +81-(0)96-382-6076

Fees Adults and high school students 200 yen
Elementary and junior high school students 100 yen
preschool child free
(Free for elementary and junior high school students
in Kumamoto City, and free for those
65 years old and older.)

Hours 9:30AM-4:30PM

Close Monday (if Monday is a national holiday, c
losed on following day). Dec 29-Jan 3



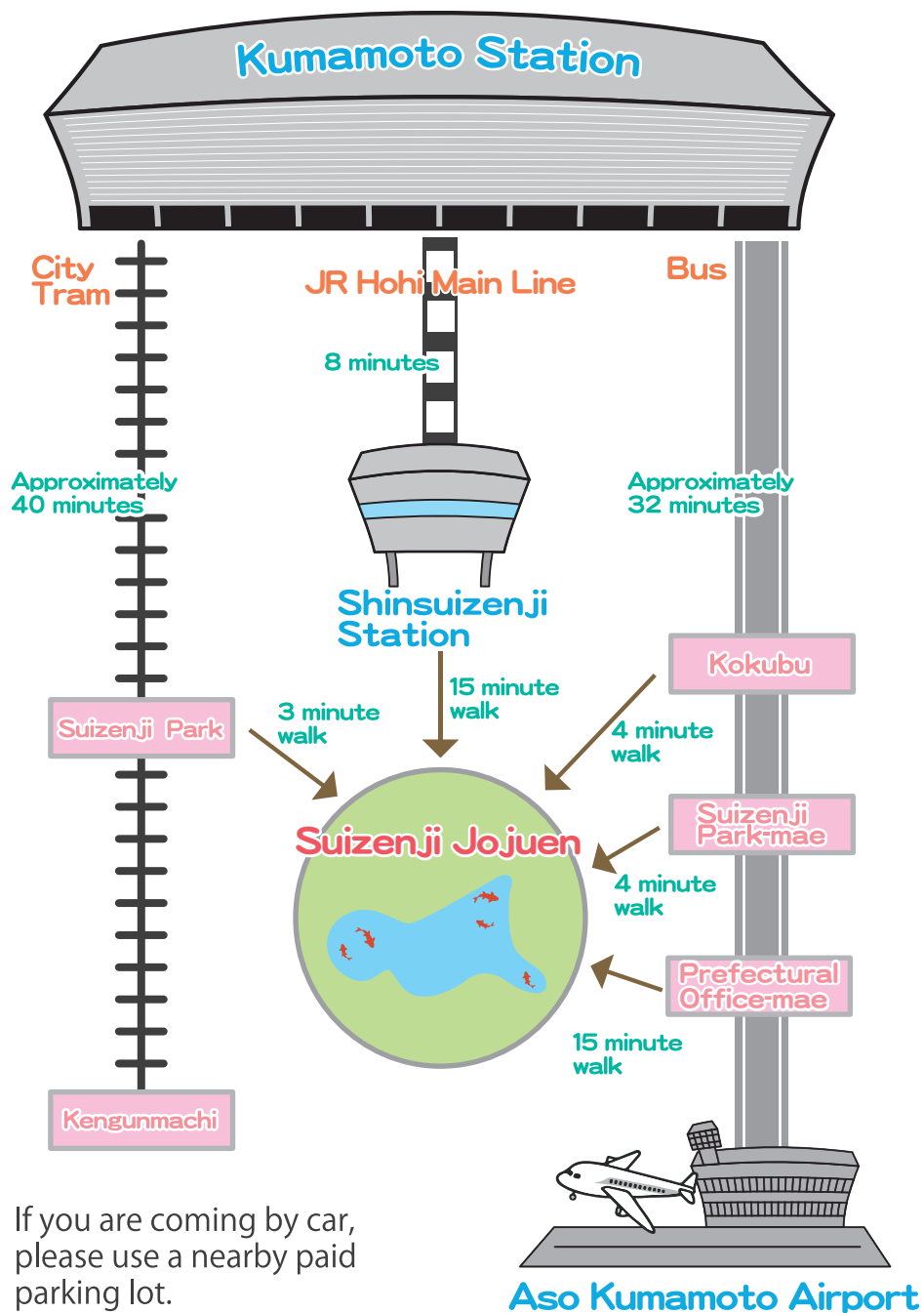
Former Oe Residence of Natsume Soseki



**5 minute walk from
Former Residence of L.L. Janes**

Address 〒862-0956 21-16 Suizenji
Ezuko Park, Chuuo-ku, Kumamoto City
Contact Tel +81-(0)96-385-2266
Fees Adults and high school students 200 yen
Elementary and junior high school students 100 yen
preschool child free
(Free for elementary and junior high school students
in Kumamoto City, and free for those
65 years old and older.)
Hours 9:30AM-4:30PM
Close Monday (on the following day if Monday is
a national holiday), Dec. 29th-Jan. 3rd

Access to Suizenji Jojuen



Kumamoto City Tram Route Map

